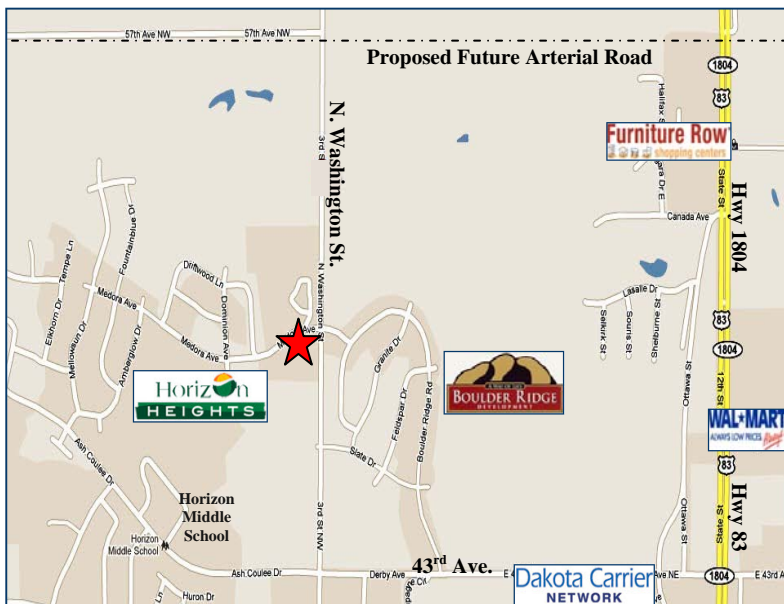


Land for Sale



Unimproved Land • 201 Medora Avenue, Bismarck, ND 58503



Property Highlights

- List Price: \$249,000
- Lot Size: 221,513 sq ft
- Zoning: RT Residential Light Commercial
- Located in the NW Bismarck Area of New Home Growth



Building relationships since 1905
 301 East Thayer Ave • Bismarck, ND 58501
 phone 701.221.2222 • fax 701.221.2290
www.duemelands.com

April Eide
 Senior Associate
 direct 701.223.5863
april@duemelands.com

Aaron Stenberg, CCIM
 Broker Associate/Partner
 direct 701.221.2100
aaron@duemelands.com

Property Details

201 Medora Avenue

Location:	201 Medora Avenue, Bismarck, ND 58503
Parcel ID:	1515-002-001
Legal Description:	Lot 1, Block 2, Good Shepherd North Addition
Lot Size:	221,513 sq ft (5.09 acres)
Zoning:	RT Residential Light Commercial
2010 Estimated Taxes:	\$4,228.62
Estimated Specials:	\$86,135.02 Balance, \$13,330.05 Annual Installment



Building relationships since 1905
301 East Thayer Ave • Bismarck, ND 58501
phone 701.221.2222 • fax 701.221.2290
www.duemelands.com

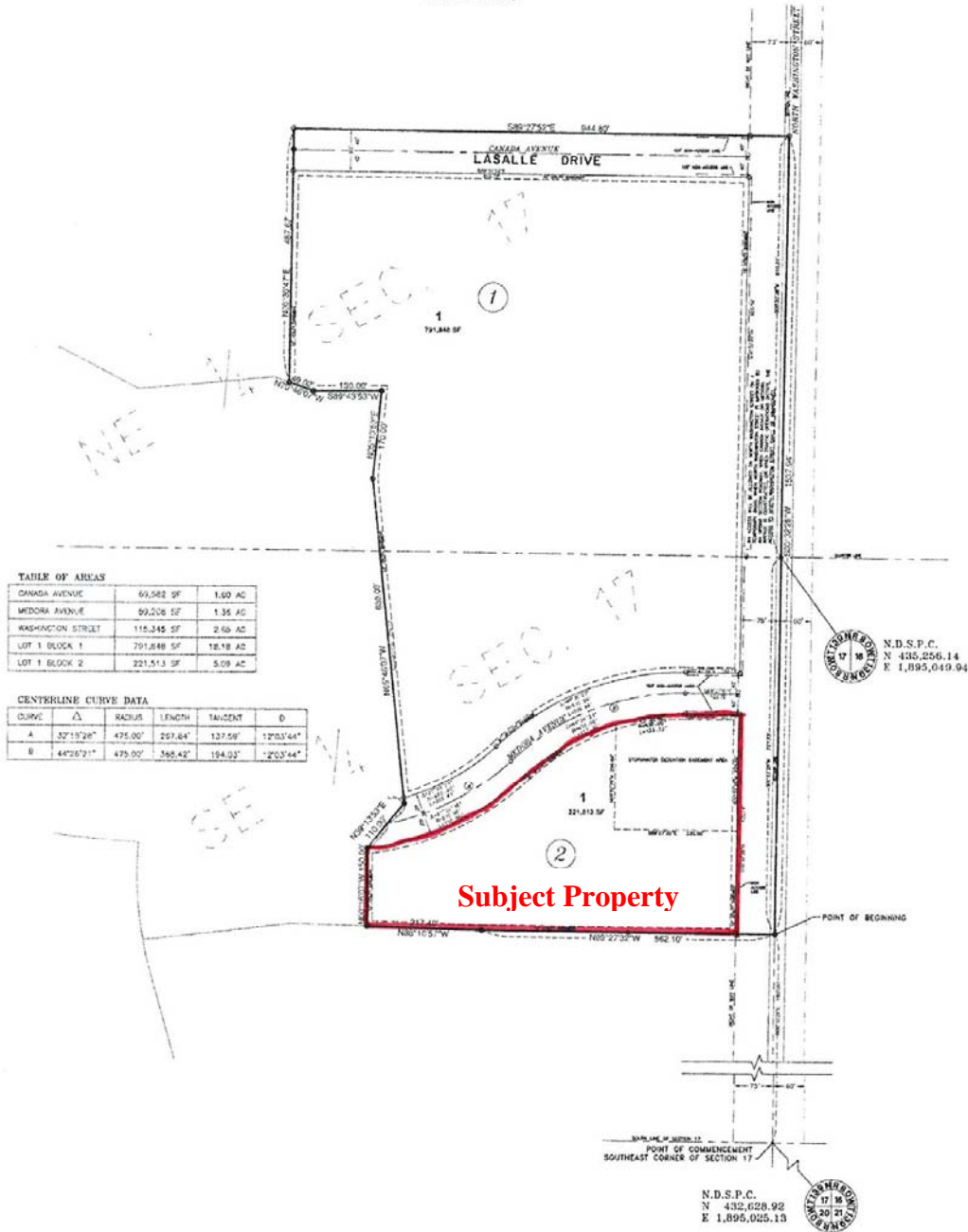
April Eide
Senior Associate
direct 701.223.5863
april@duemelands.com

Aaron Stenberg, CCIM
Broker Associate/Partner
direct 701.221.2100
aaron@duemelands.com

Plat Map

201 Medora Avenue

GOOD SHEPHERD NORTH ADDITION
 PART OF E 1/2 OF
 SECTION 17 - T139N - R80W
 BISMARCK, NORTH DAKOTA
 JUNE 2005



Building relationships since 1905
 301 East Thayer Ave • Bismarck, ND 58501
 phone 701.221.2222 • fax 701.221.2290
www.duemelands.com

April Eide
 Senior Associate
 direct 701.223.5863
april@duemelands.com

Aaron Stenberg, CCIM
 Broker Associate/Partner
 direct 701.221.2100
aaron@duemelands.com