

Retail Space for Lease



DUEMELANDS
COMMERCIAL REAL ESTATE

400 South Broadway - Minot, North Dakota



Interior Rendering: 1,200 - 11,040 sf

Call for Lease Rates

- ◆ NNN Lease - CAM to be determined
- ◆ Term length negotiable

Property Highlights

- ◆ 1,200 to 11,040 sf
- ◆ Recently renovated building
- ◆ Monument signage available
- ◆ Located at high traffic intersection of Burdick Expressway & Broadway Avenue
 - ◇ 31,700 vpd on South Broadway
 - ◇ 30,105 vpd on Burdick Expressway
- ◆ (48) parking spaces
- ◆ *Broker / Owner*

Demographics

- ◆ Population (1-mile): 12,601
- ◆ Population (3-mile): 47,965
- ◆ Population (5-mile): 53,585
- ◆ Average HH income: \$74,818

Minot, ND



Duemelands Commercial Real Estate
301 E. Thayer Avenue - Bismarck, ND 58501
Phone: (701) 221-2222
www.duemelands.com

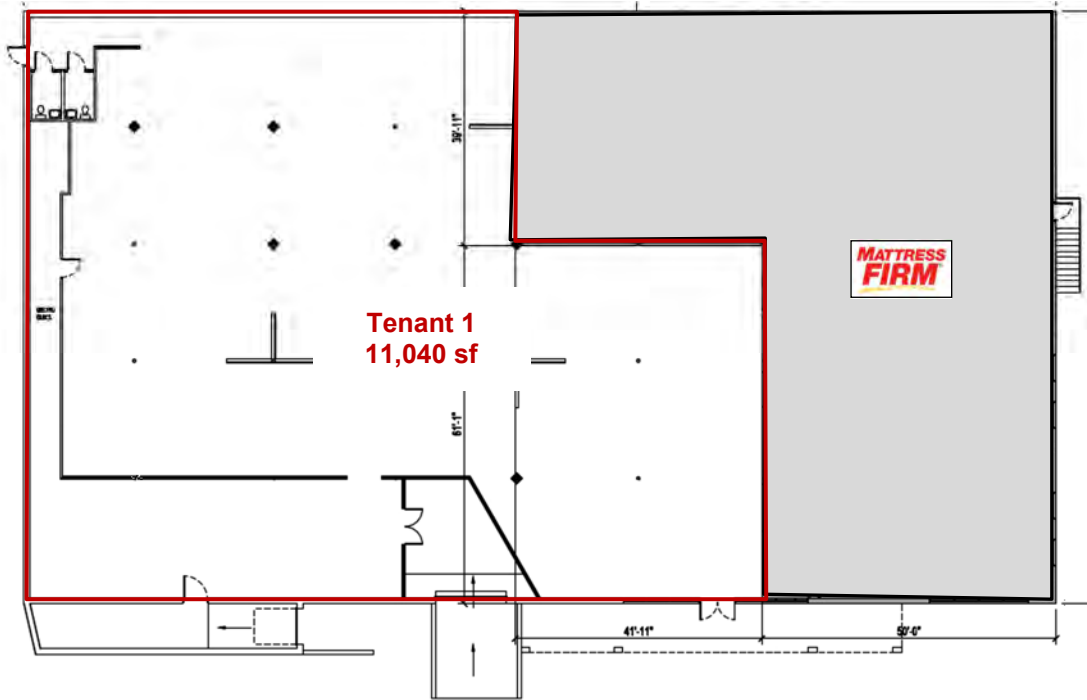
Jill Duemeland, CCIM
CEO & President
Phone: 701.221.9033
jill@duemelands.com

April Eide, CCIM
Vice President of Brokerage
Direct: 701.223.5863
april@duemelands.com

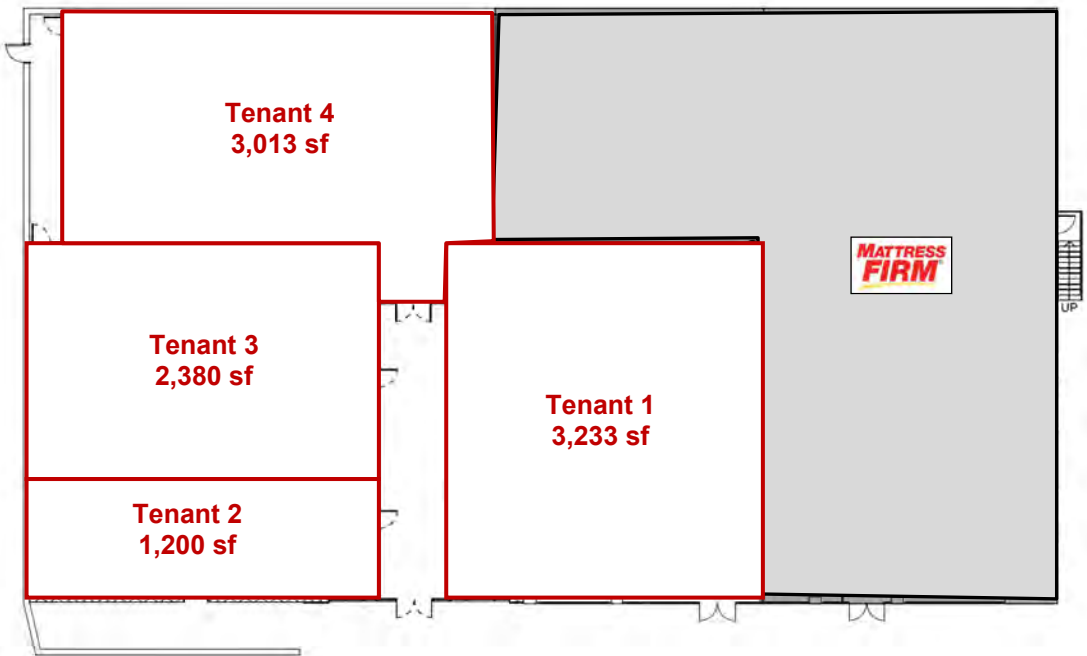
Floor Plan Options

Retail Space for Lease

Option A: 11,040 sf



Option B: 1,200 - 3,233 sf



Duemelands Commercial Real Estate
301 E. Thayer Avenue - Bismarck, ND 58501
Phone: (701) 221-2222
www.duemelands.com

Jill Duemeland, CCIM
CEO & President
Phone: 701.221.9033
jill@duemelands.com

April Eide, CCIM
Vice President of Brokerage
Direct: 701.223.5863
april@duemelands.com

Property Location

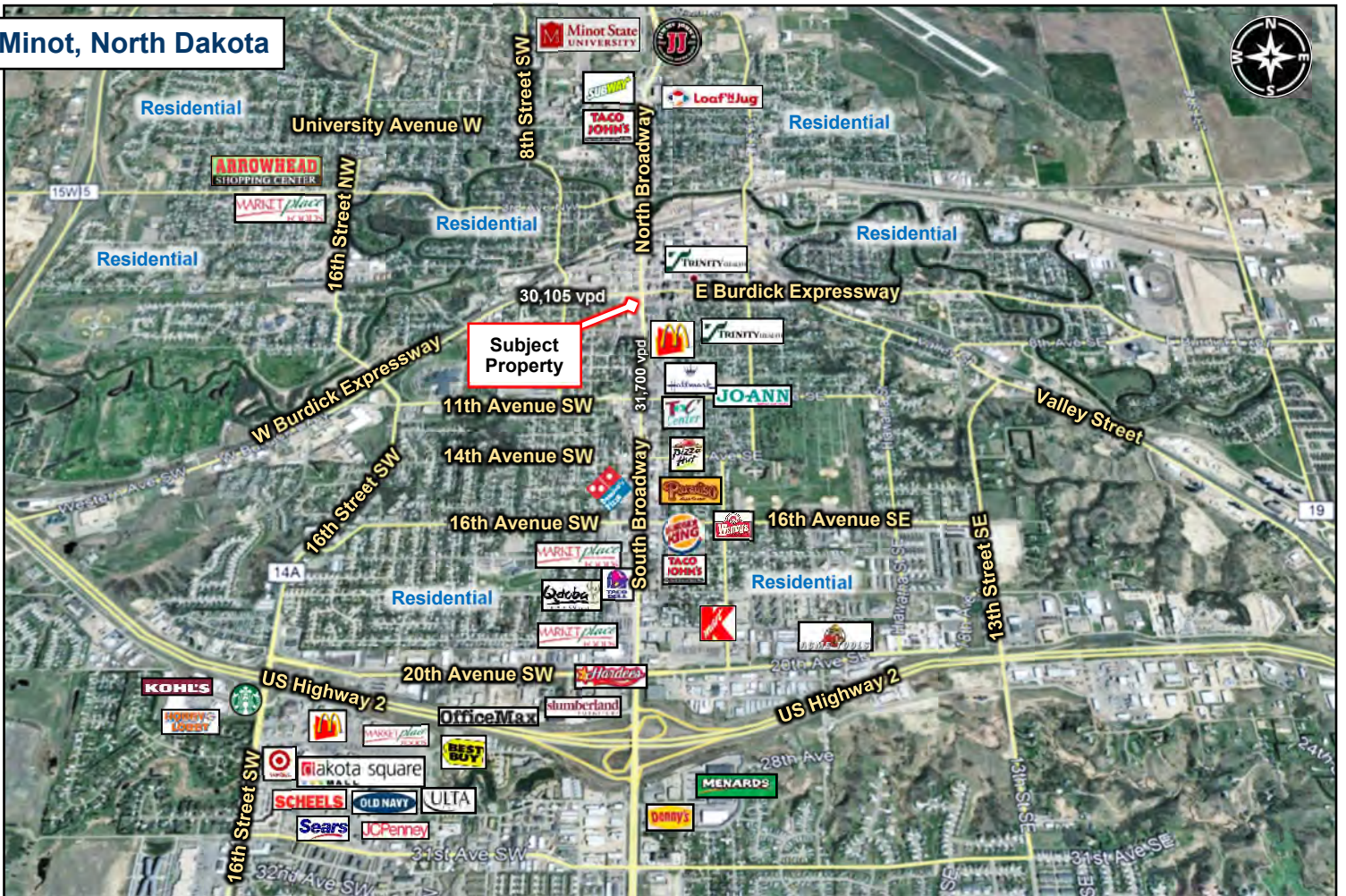
Retail Space for Lease

400 S Broadway

Located at the Intersection of Burdick Expressway & South Broadway Street



Minot, North Dakota



Duemelands Commercial Real Estate
301 E. Thayer Avenue - Bismarck, ND 58501
Phone: (701) 221-2222
www.duemelands.com

Jill Duemeland, CCIM
CEO & President
Phone: 701.221.9033
jill@duemelands.com

April Eide, CCIM
Vice President of Brokerage
Direct: 701.223.5863
april@duemelands.com