

Downtown Office w/ Parking



421 North 4th Street - Bismarck, North Dakota



Sub-Lease Terms

- ◆ Rate negotiable
- ◆ Sub-Lease term through January 31, 2021

Building Information

- ◆ 3,880 sf available (1,940 sf each level)
- ◆ Card access available
- ◆ Existing furniture available
- ◆ Existing Drive-thru
- ◆ Newly remodeled with open floor plan including (4) private offices, conference room, & break room

Site Information

- ◆ 8,416 sf lot (60' x 140')
- ◆ (13) on-site parking spaces
- ◆ Monument signage



Duemelands Commercial Real Estate
301 E. Thayer Avenue - Bismarck, ND 58501
Phone: (701) 221-2222
www.duemelands.com

Jill Duemeland, CCIM
CEO & President
Phone: 701.221.9033
jill@duemelands.com

April Eide, CCIM
Vice President of Brokerage
Direct: 701.223.5863
april@duemelands.com

→ Pictures

Office for Sub-Lease



Duemelands Commercial Real Estate
301 E. Thayer Avenue - Bismarck, ND 58501
Phone: (701) 221-2222
www.duemelands.com

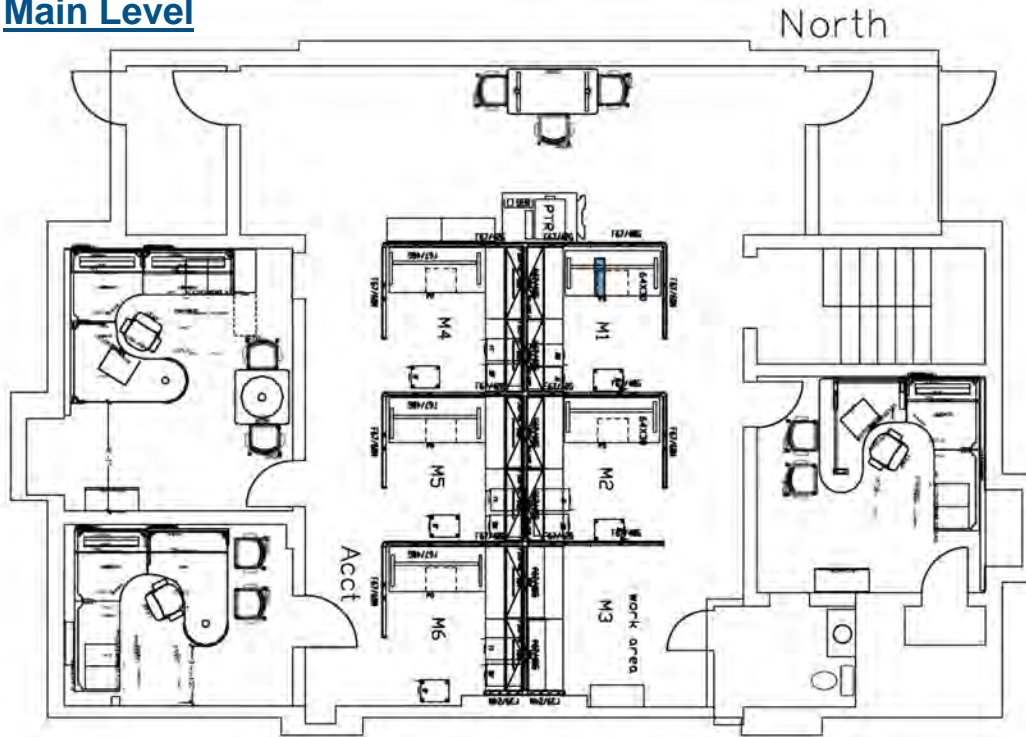
Jill Duemeland, CCIM
CEO & President
Phone: 701.221.9033
jill@duemelands.com

April Eide, CCIM
Vice President of Brokerage
Direct: 701.223.5863
april@duemelands.com

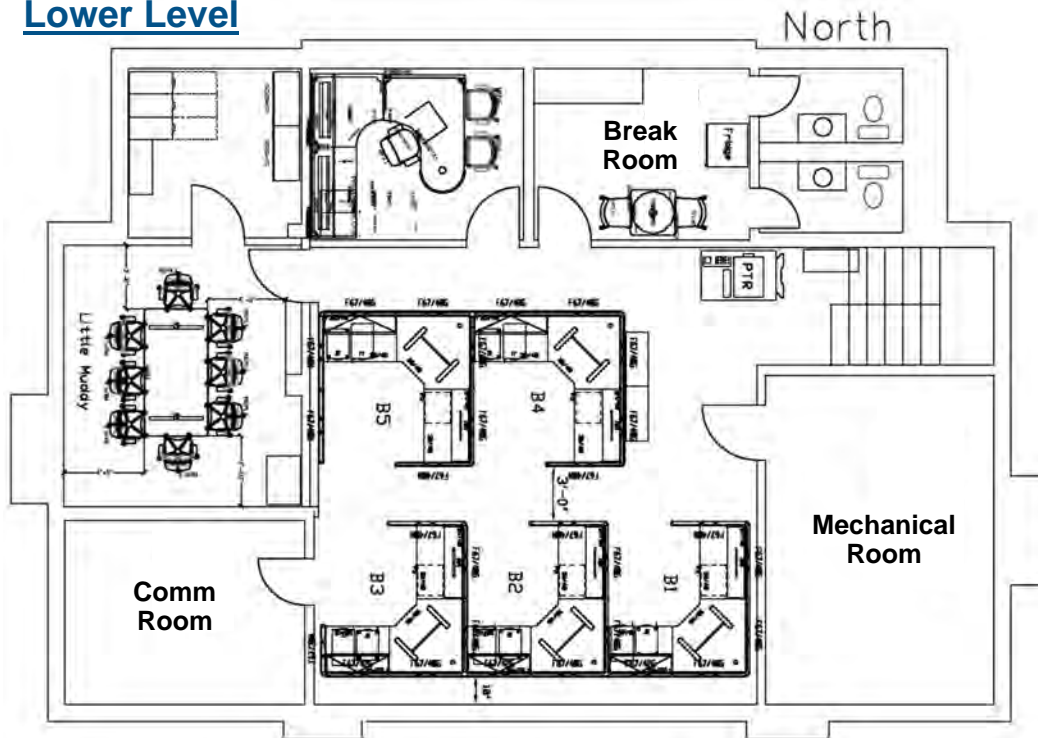
Floor Plan

Office for Sub-Lease

Main Level



Lower Level



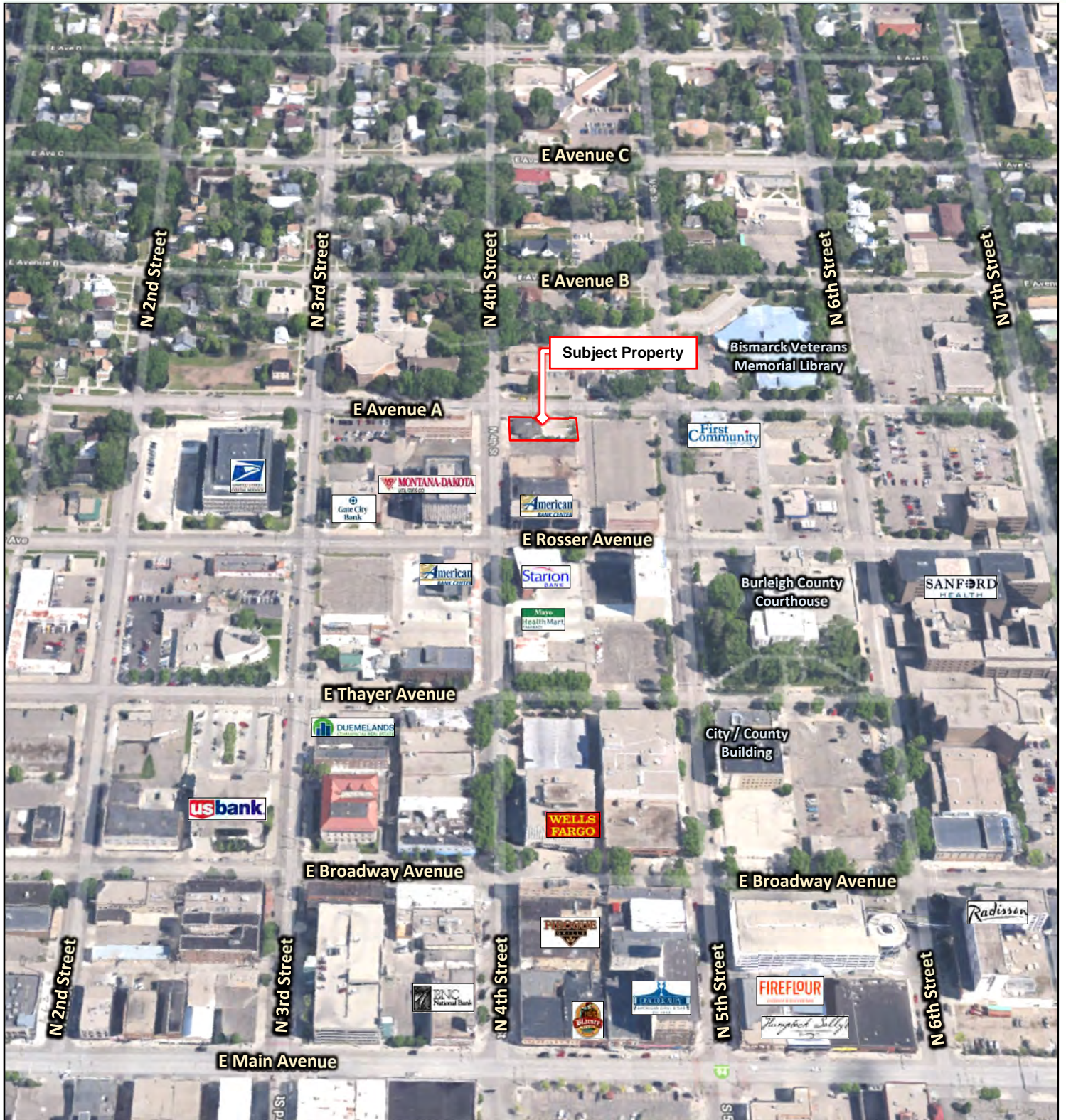
Duemelands Commercial Real Estate
301 E. Thayer Avenue - Bismarck, ND 58501
Phone: (701) 221-2222
www.duemelands.com

Jill Duemeland, CCIM
CEO & President
Phone: 701.221.9033
jill@duemelands.com

April Eide, CCIM
Vice President of Brokerage
Direct: 701.223.5863
april@duemelands.com

Location Aerial

Office for Sub-Lease



Duemlands Commercial Real Estate
301 E. Thayer Avenue - Bismarck, ND 58501
Phone: (701) 221-2222
www.duemlands.com

Jill Duemeland, CCIM
CEO & President
Phone: 701.221.9033
jill@duemlands.com

April Eide, CCIM
Vice President of Brokerage
Direct: 701.223.5863
april@duemlands.com