

Retail Space for Lease



DUEMELANDS
COMMERCIAL REAL ESTATE

Pinehurst Square East - Bismarck, North Dakota



Call for Terms and Lease Rates

- ◆ \$3.84 psf CAM

Available Suites

- ◆ (1) Suite 128 - 1,675 sf
- ◆ (2) Suite 134 - 1,610 sf
- ◆ (3) Suite 913A - 1,570 sf
- ◆ (4) Suite 917 - 5,050 sf
- ◆ (5) Suite 923 - 3,297 sf
- ◆ (6) Suite 925 - 5,500 sf
- ◆ (7) Suite 929 - 7,500 sf

Property Information

- ◆ Located in the Pinehurst Square Shopping Center
- ◆ Abundant parking
- ◆ 16,605 vpd on W Century Avenue (ND DOT 2019)



Duemelands Commercial Real Estate
301 E. Thayer Avenue - Bismarck, ND 58501
Phone: (701) 221-2222
www.duemelands.com

Jill Duemeland, CCIM
CEO & President
Phone: 701.221.9033
jill@duemelands.com

April Eide, CCIM
Vice President of Brokerage
Direct: 701.223.5863
april@duemelands.com

Exterior Pictures

Retail Space for Lease



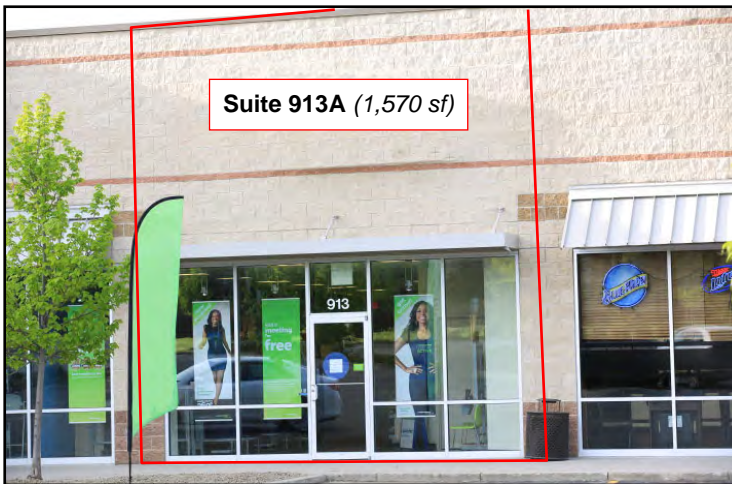
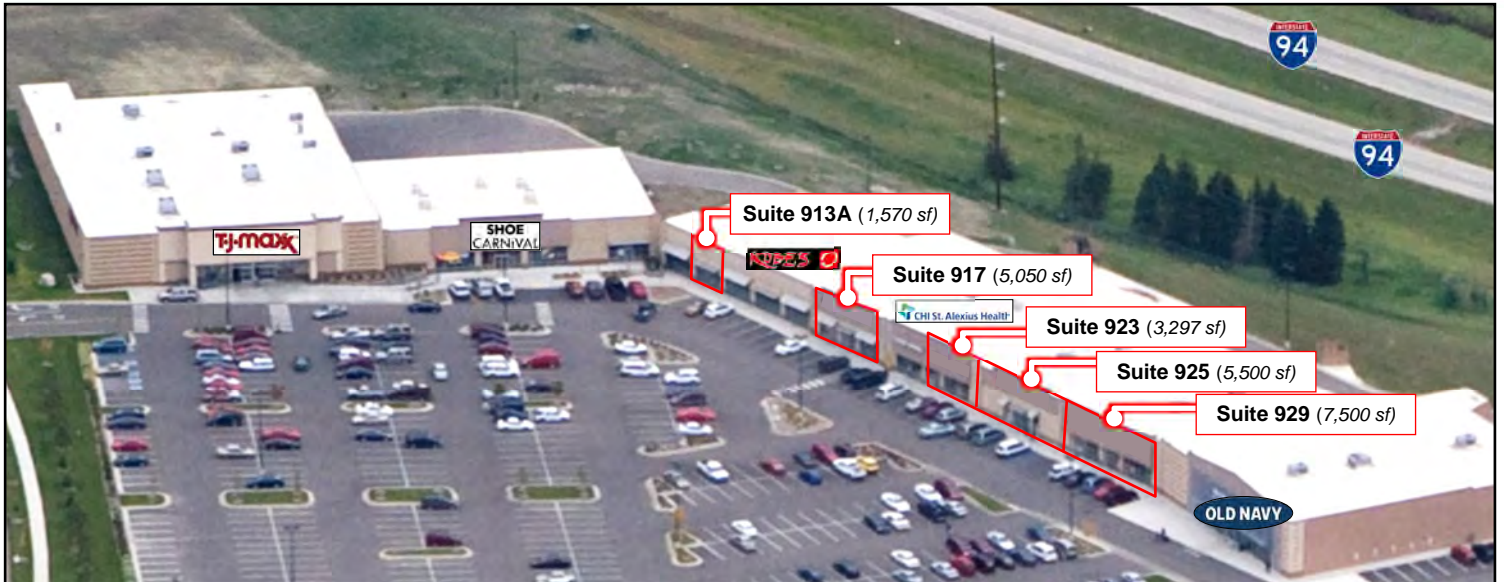
Duemelands Commercial Real Estate
301 E. Thayer Avenue - Bismarck, ND 58501
Phone: (701) 221-2222
www.duemelands.com

Jill Duemeland, CCIM
CEO & President
Phone: 701.221.9033
jill@duemelands.com

April Eide, CCIM
Vice President of Brokerage
Direct: 701.223.5863
april@duemelands.com

Exterior Pictures

Retail Space for Lease



Duemelands Commercial Real Estate
301 E. Thayer Avenue - Bismarck, ND 58501
Phone: (701) 221-2222
www.duemelands.com

Jill Duemeland, CCIM
CEO & President
Phone: 701.221.9033
jill@duemelands.com

April Eide, CCIM
Vice President of Brokerage
Direct: 701.223.5863
april@duemelands.com

The data and information contained herein, while not guaranteed, have been obtained from sources we believe to be reliable. We make no warranties, whether expressed or implied, as to the accuracy or completeness of the information. Any reference to square footage and monetary values are considered approximations. Buyer or Lessor should conduct their own analysis and rely on their own investigative results.

Floorplans

Retail Space for Lease



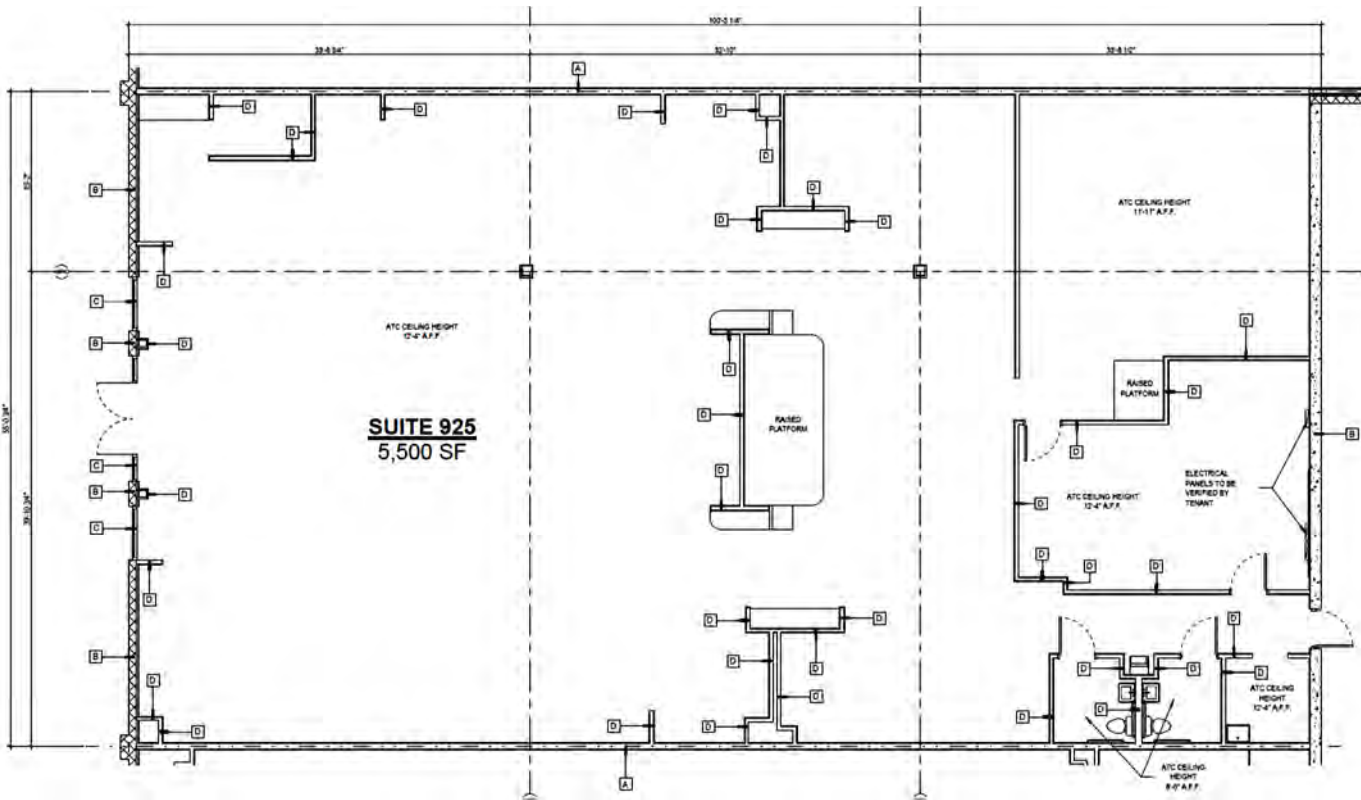
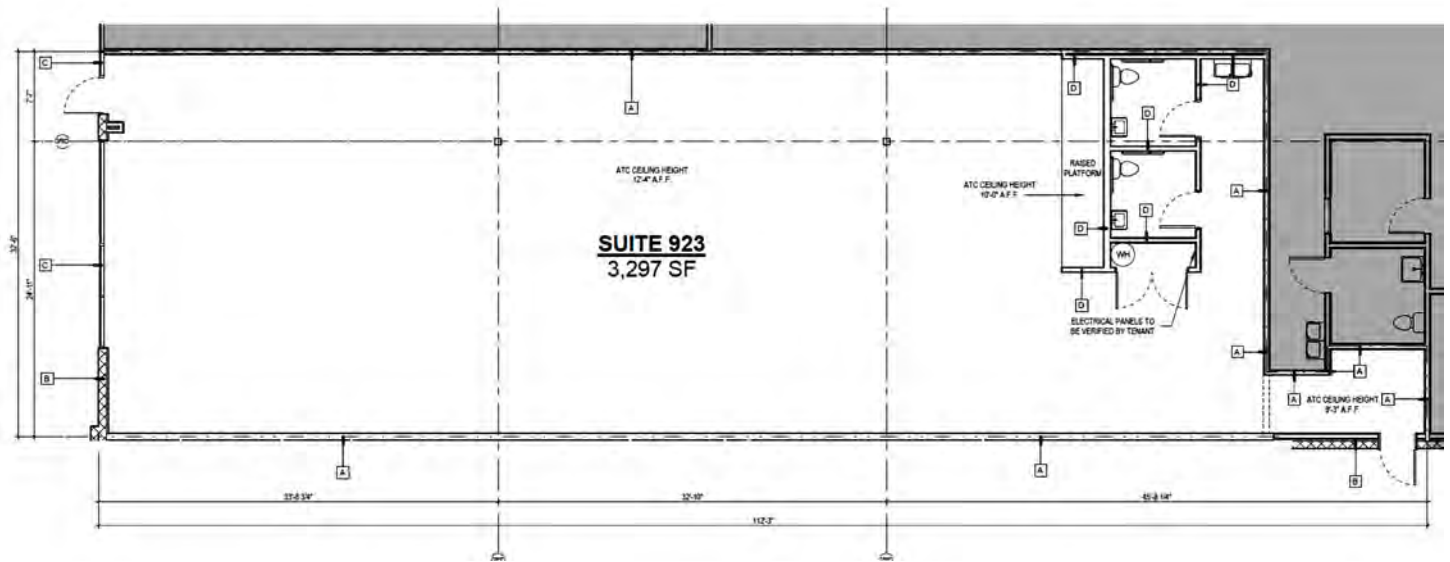
Duemelands Commercial Real Estate
301 E. Thayer Avenue - Bismarck, ND 58501
Phone: (701) 221-2222
www.duemelands.com

Jill Duemeland, CCIM
CEO & President
Phone: 701.221.9033
jill@duemelands.com

April Eide, CCIM
Vice President of Brokerage
Direct: 701.223.5863
april@duemelands.com

Floorplans

Retail Space for Lease



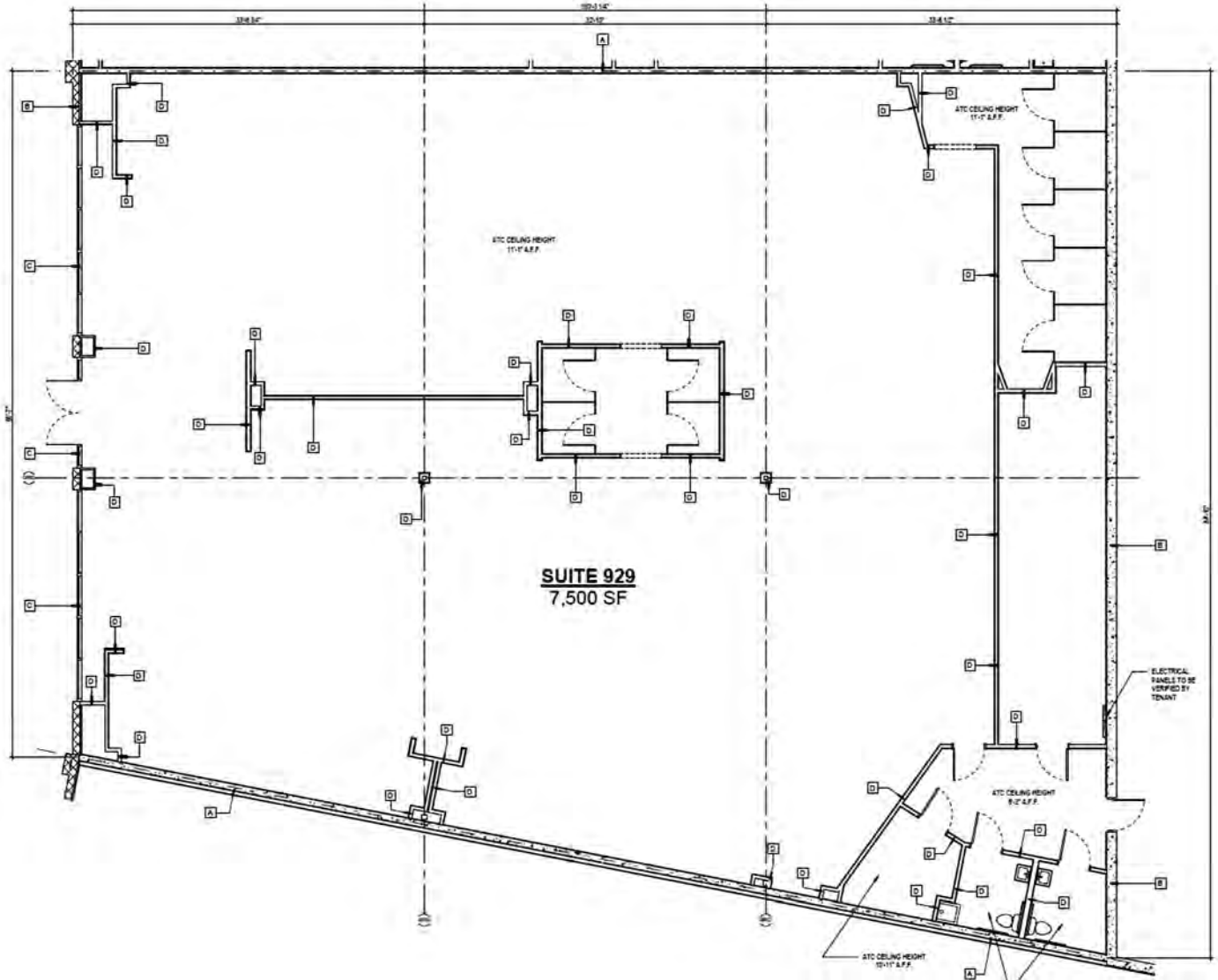
Duemelands Commercial Real Estate
301 E. Thayer Avenue - Bismarck, ND 58501
Phone: (701) 221-2222
www.duemelands.com

Jill Duemeland, CCIM
CEO & President
Phone: 701.221.9033
jill@duemelands.com

April Eide, CCIM
Vice President of Brokerage
Direct: 701.223.5863
april@duemelands.com

Floorplans

Retail Space for Lease



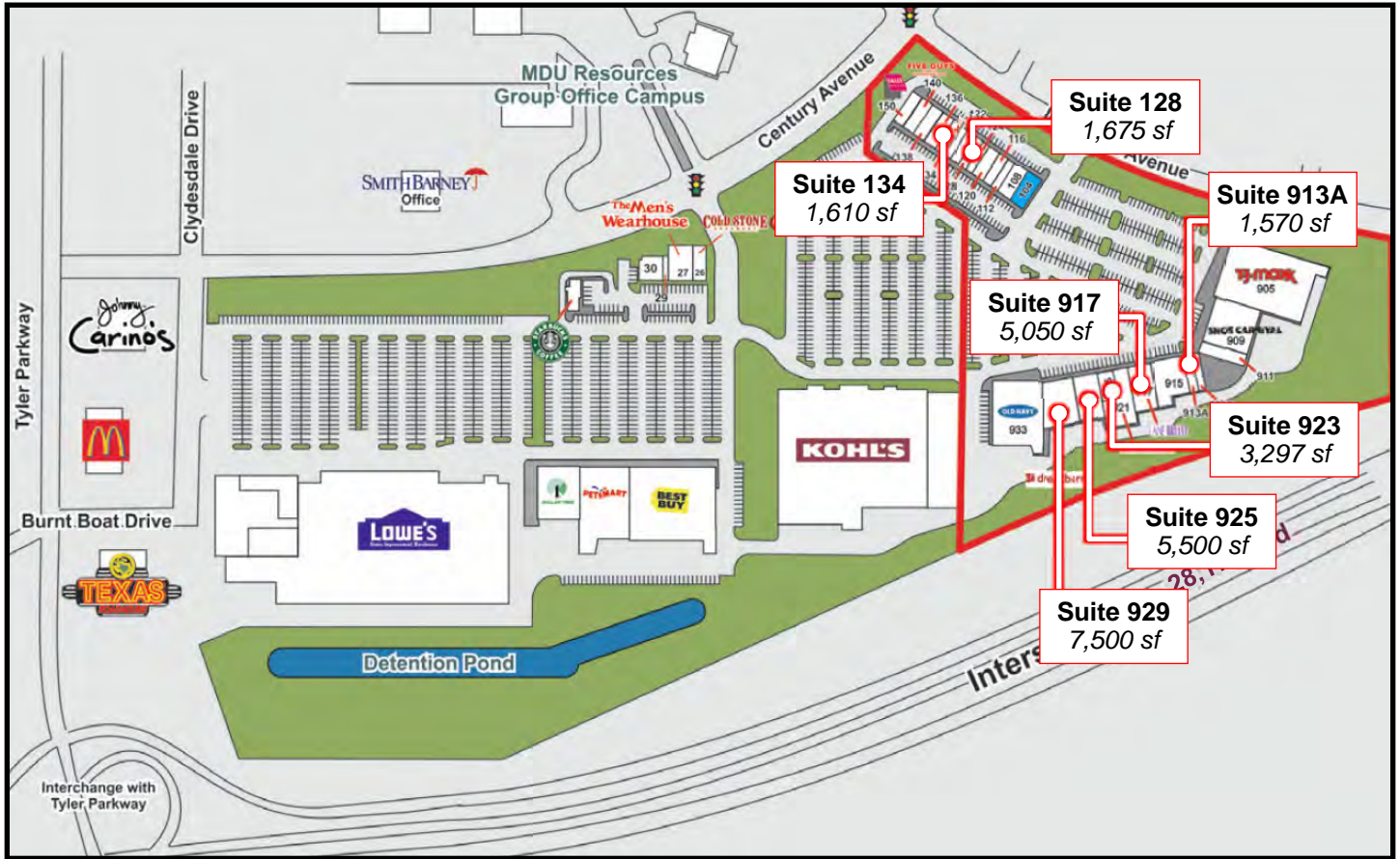
Duemelands Commercial Real Estate
301 E. Thayer Avenue - Bismarck, ND 58501
Phone: (701) 221-2222
www.duemelands.com

Jill Duemeland, CCIM
CEO & President
Phone: 701.221.9033
jill@duemelands.com

April Eide, CCIM
Vice President of Brokerage
Direct: 701.223.5863
april@duemelands.com

Tenant List

Retail Space for Lease



Suite	Tenant	SF	Suite	Tenant	SF
104	SolidCore	2,000	150	Sally Beauty	1,500
106	Leased	2,925	905	TJ Maxx	26,000
108	Blue Apple Walk-in Clinic	1,350	909	Shoe Carnival	10,000
112	Nardello's	1,513	911	Northern Lights Physical Therapy	2,450
116	Apricot Lane Boutique	2,058	913	Lacey's Custom Jewelry	1,273
120	Salt Caves Wellness Relaxation	1,288	913A	Available	1,570
124	Classy Nails	1,425	915	Kobe's Japanese Cuisine	6,245
128	Available	1,675	917	Available	5,050
132	Martinson Family Dental	3,000	921	CHI Urgent Care	4,651
134	Available	1,610	923	Available	3,297
136	Edible Arrangements	1,275	925	Available	5,500
138	Jimmy John's	1,333	929	Available	7,500
140	Five Guy's Burgers & Fries	2,300	933	Old Navy	15,364



Duemelands Commercial Real Estate
 301 E. Thayer Avenue - Bismarck, ND 58501
 Phone: (701) 221-2222
www.duemelands.com

Jill Duemeland, CCIM
 CEO & President
 Phone: 701.221.9033
jill@duemelands.com

April Eide, CCIM
 Vice President of Brokerage
 Direct: 701.223.5863
april@duemelands.com