

Grand Forks Marketplace - Grand Forks, North Dakota



Lease Rates Negotiable

Available Spaces

- ◆ Former Bed Bath & Beyond 20,110 sf
- ◆ Former Catherine's 4,016 sf
- ◆ Former Lane Bryant 8,078 sf
- ◆ Former Gordmans 55,125 sf

Area Information

- ◆ Target Center with Lowes, Michael's, Old Navy, Famous Footwear, Starbucks, & Best Buy
- ◆ Close to Columbia Mall, Menards, Kohl's, Hobby Lobby, and Walmart / Sam's Club
- ◆ Next to Interstate 29 off-ramp
- ◆ 17,265 vpd along 32nd Avenue S

Area Demographics

Radius	1-mile	3-mile	5-mile
Population	10,367	52,368	67,690
Average Household Income	\$65,701	\$70,043	\$70,725
Households w/ \$50K+ Income	2,393	11,745	15,342
% of Pop. w/ Assoc. Degree +	52.9%	51.8%	49.8%
Number of Employees	8,130	38,227	51,620



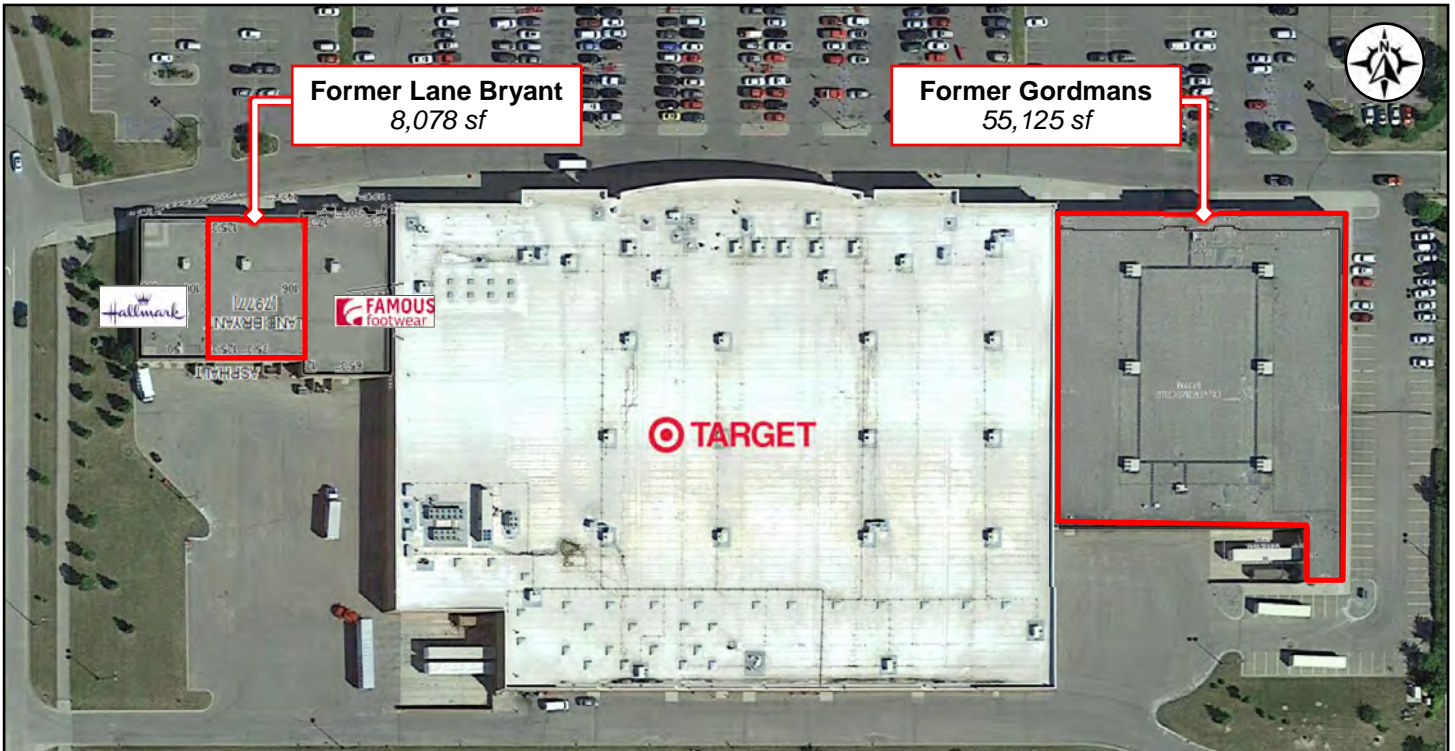
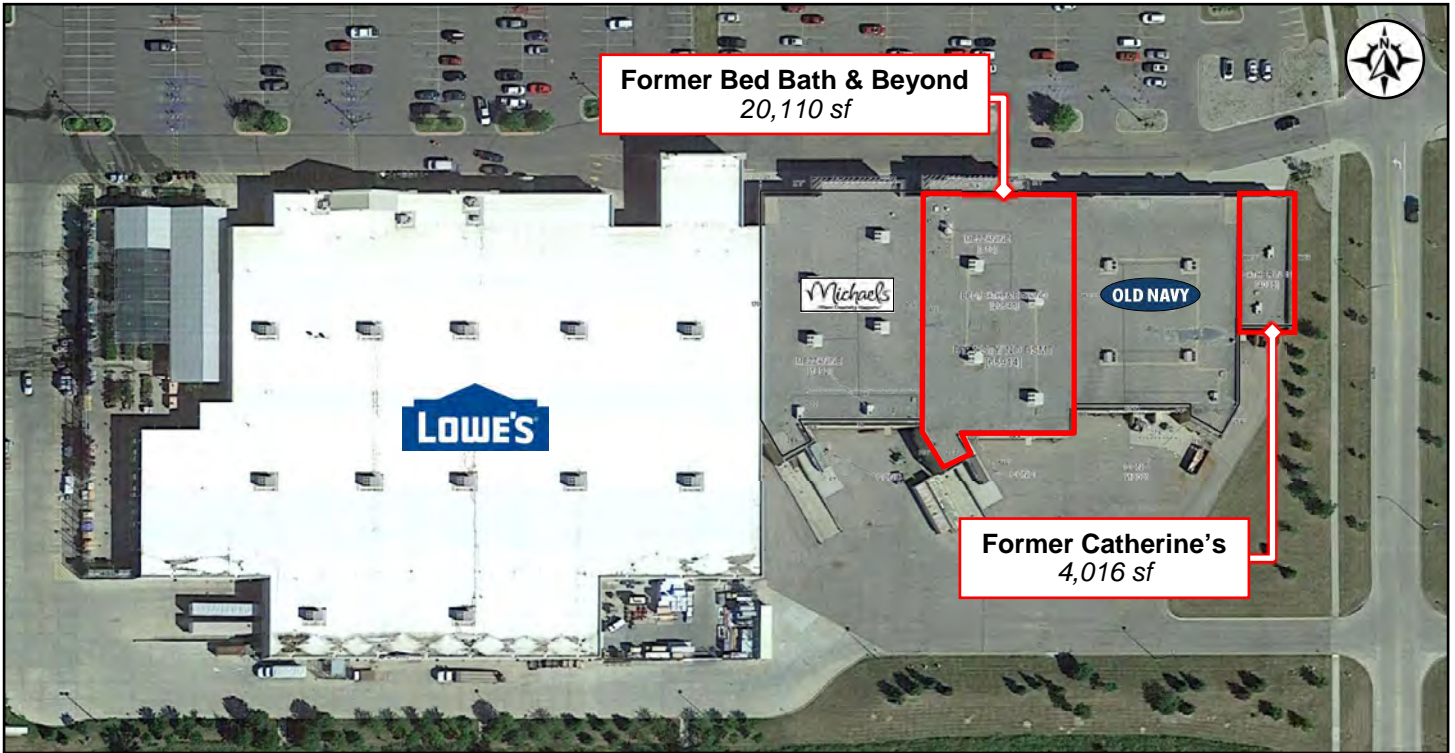
Duemelands Commercial Real Estate
 301 E. Thayer Avenue - Bismarck, ND 58501
 Phone: (701) 221-2222
www.duemelands.com

Jill Duemeland, CCIM
 CEO & President
 Phone: 701.221.9033
jill@duemelands.com

April Eide, CCIM
 Vice President of Brokerage
 Direct: 701.223.5863
april@duemelands.com

Marketplace Grand Forks Site Plans

Retail | Office | Medical



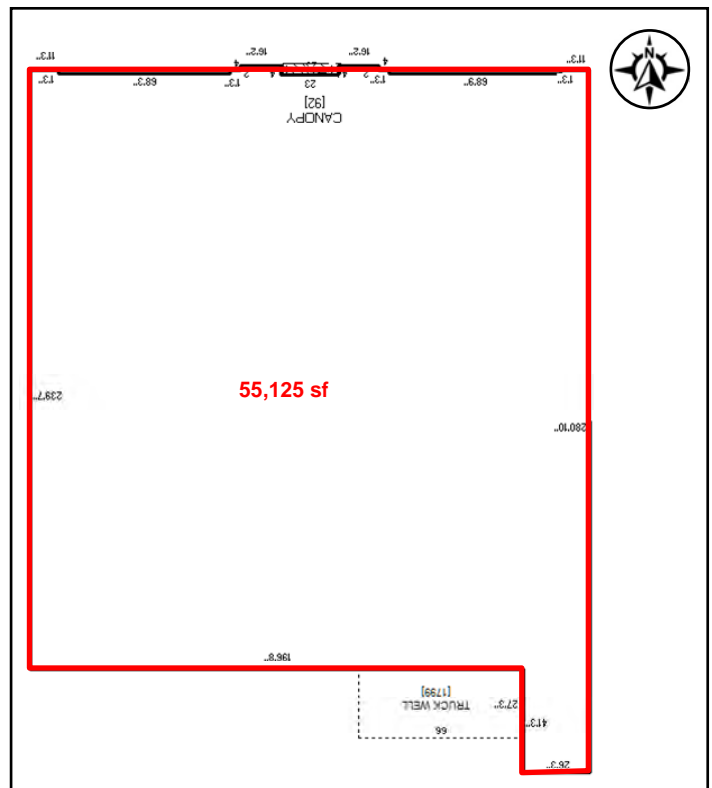
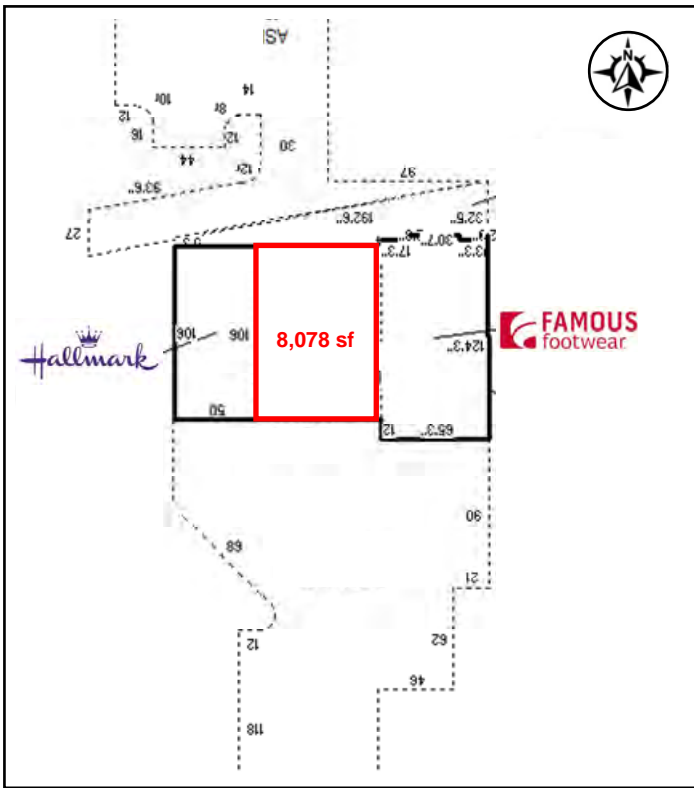
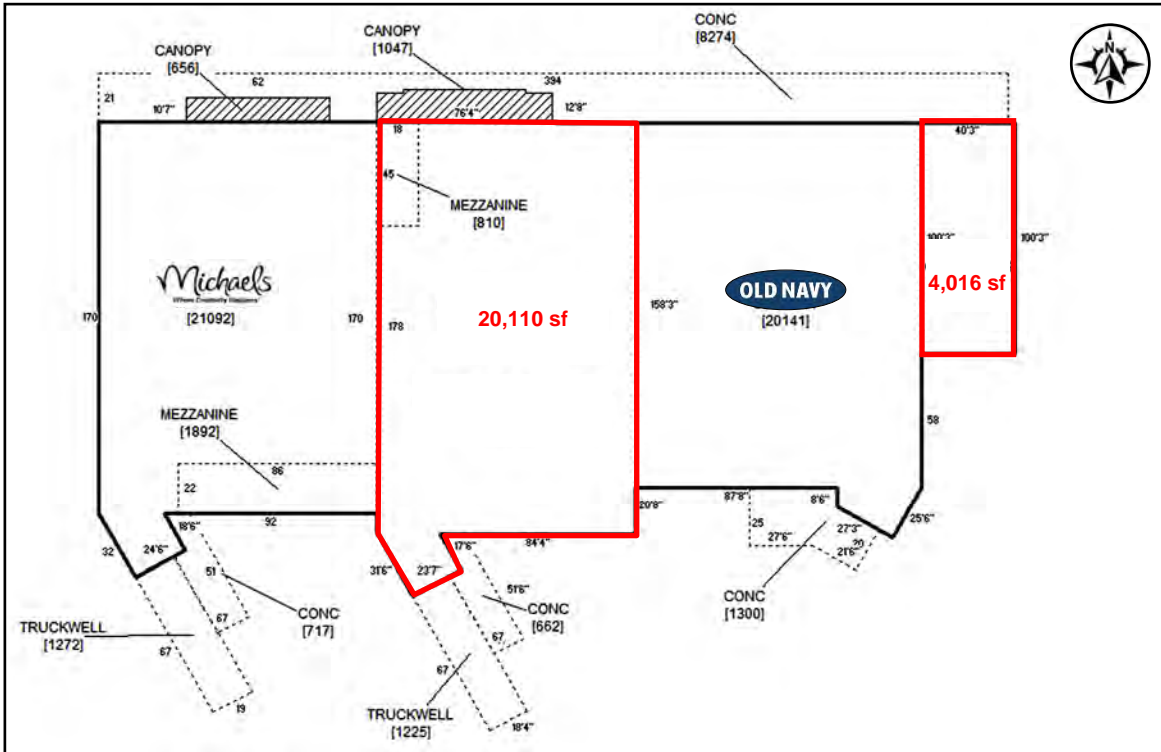
Duemelands Commercial Real Estate
301 E. Thayer Avenue - Bismarck, ND 58501
Phone: (701) 221-2222
www.duemelands.com

Jill Duemeland, CCIM
CEO & President
Phone: 701.221.9033
jill@duemelands.com

April Eide, CCIM
Vice President of Brokerage
Direct: 701.223.5863
april@duemelands.com

Property Drawings

Retail | Office | Medical



Duemelands Commercial Real Estate
 301 E. Thayer Avenue - Bismarck, ND 58501
 Phone: (701) 221-2222
www.duemelands.com

Jill Duemeland, CCIM
 CEO & President
 Phone: 701.221.9033
jill@duemelands.com

April Eide, CCIM
 Vice President of Brokerage
 Direct: 701.223.5863
april@duemelands.com