

Office | Retail Space for Lease



Arrowhead Shopping Center - 1600 2nd Avenue SW, Minot, ND



Call for Lease Rates

Property Highlights

- ◆ **Arrowhead Mall**
 - ◇ Corner of 16th St. SW & 2nd Ave. SW
 - ◇ 11,535 vpd on 16th Street SW
- ◆ **Grocery Anchored** - Marketplace Foods
- ◆ **Great Signage & Ample Parking**
- ◆ **Available Suites**
 - ◇ Suite 06 - 1,416 sf *Available now*
 - ◇ Suite 10 - 1,766 sf *Leased*
 - ◇ Suite 29 - 1,030 sf *Leased*



Duemelands Commercial Real Estate
301 E. Thayer Avenue - Bismarck, ND 58501
Phone: (701) 221-2222
www.duemelands.com

Jill Duemeland, CCIM
CEO & President
Direct: 701.221.9033
jill@duemelands.com

April Eide, CCIM
VP of Brokerage
Phone: 701.223.5863
april@duemelands.com

→ Floorplan & Tenant List

Office | Retail Space

ARROWHEAD SHOPPING CENTER



| Suite # | Tenant | Suite # | Tenant |
|---------|-------------------------|---------|---------------------------|
| 1 | Marketplace Foods | 19 | Northland Med Clinic |
| 2 | Arrowhead Barber | 20 | Ace Hardware |
| 3 | ND Tax Dept. | 21 | Minot Dental |
| 4 | ND DES | 22 | Modern Dental |
| 5 | ND MVD | 24 | Modern Dental |
| 6 | Available to Lease | 25 | Modern Dental |
| 7 | Alliance Pipeline | 27 | CDM Smith |
| 10 | Northland Health | 28 | Edward Jones |
| 12 | ND Dept. of Corrections | 29 | Workforce Safety & Insur. |
| 14 | ND Parole Board | 30 | Ackre Law Firm |
| 16 | Enbridge | 31 | Guaranteed Rate |
| 18 | Enbridge | 33 | Marketplace Liquor |



Duemelands Commercial Real Estate
301 E. Thayer Avenue - Bismarck, ND 58501
Phone: (701) 221-2222
www.duemelands.com

Jill Duemeland, CCIM
CEO & President
Direct: 701.221.9033
jill@duemelands.com

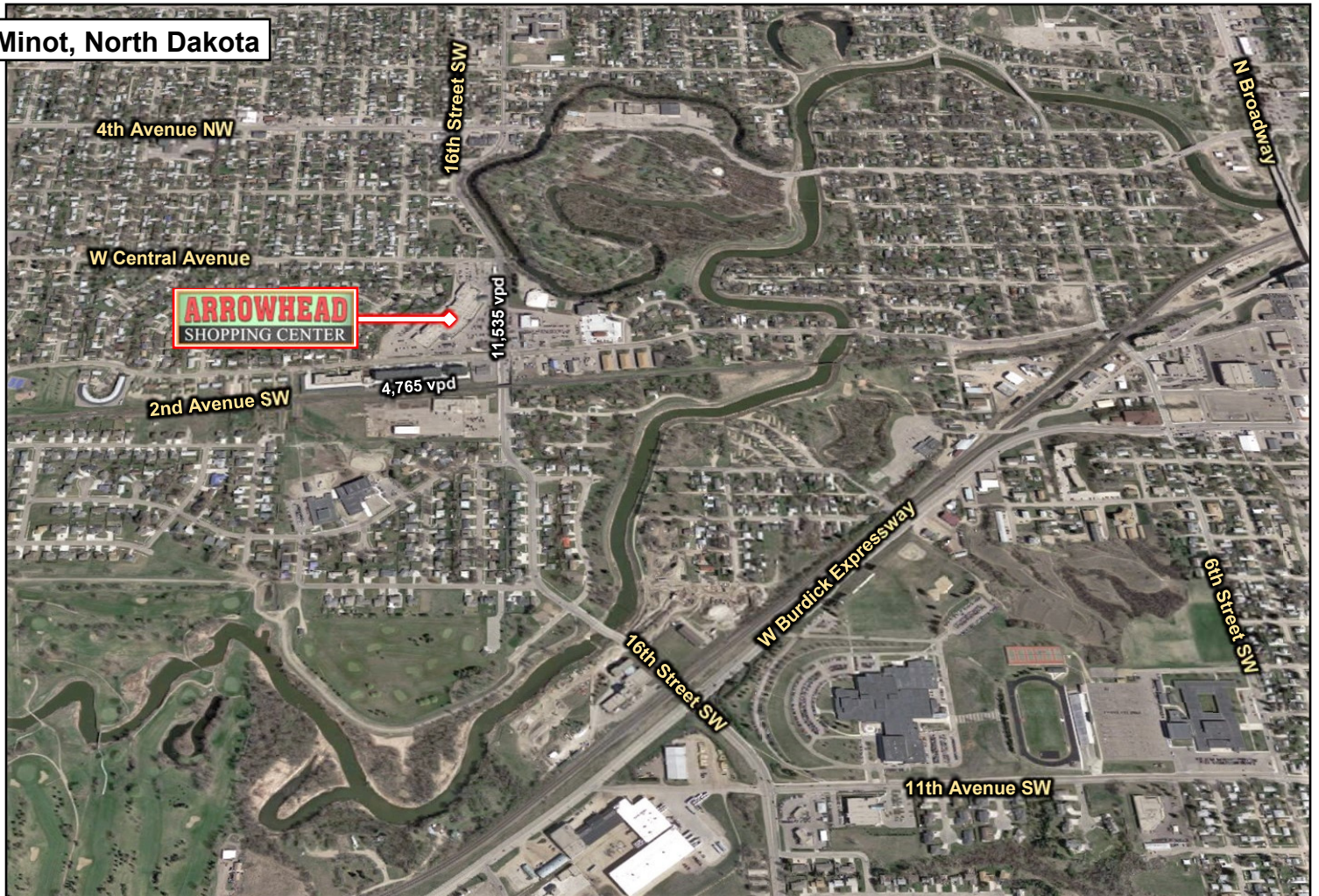
April Eide, CCIM
VP of Brokerage
Phone: 701.223.5863
april@duemelands.com

The data and information contained herein, while not guaranteed, have been obtained from sources we believe to be reliable. We make no warranties, whether expressed or implied, as to the accuracy of the information. Any reference to square footage and monetary values are considered approximations. Buyer or Lessee should conduct their own analysis and rely on their own investigative results.

Property Location

Office | Retail Space

Minot, North Dakota



Duemelands Commercial Real Estate
301 E. Thayer Avenue - Bismarck, ND 58501
Phone: (701) 221-2222
www.duemelands.com

Jill Duemeland, CCIM
CEO & President
Direct: 701.221.9033
jill@duemelands.com

April Eide, CCIM
VP of Brokerage
Phone: 701.223.5863
april@duemelands.com

The data and information contained herein, while not guaranteed, have been obtained from sources we believe to be reliable. We make no warranties, whether expressed or implied, as to the accuracy of the information. Any reference to square footage and monetary values are considered approximations. Buyer or Lessee should conduct their own analysis and rely on their own investigative results.