

# Retail Space for Lease

## Pinehurst Square East - Bismarck, North Dakota



### Call for Terms and Lease Rates

#### Available Suites

- ◆ 1,675 sf - Suite 128
- ◆ 1,273 sf - Suite 913
- ◆ 1,570 sf - Suite 913A
- ◆ 5,050 sf - Suite 917
- ◆ 3,297 sf - Suite 923
- ◆ 5,500 sf - Suite 925
- ◆ 7,500 sf - Suite 929
- ◆ 16,297 sf - Suites 923, 925, & 929 combined

#### Property Information

- ◆ \$3.84 psf CAM
- ◆ Located in the Pinehurst Square Shopping Center
- ◆ 16,605 vpd on W Century Avenue (ND DOT 2019)



**Duemelands Commercial Real Estate**  
301 E. Thayer Avenue - Bismarck, ND 58501  
Phone: (701) 221-2222  
[www.duemelands.com](http://www.duemelands.com)

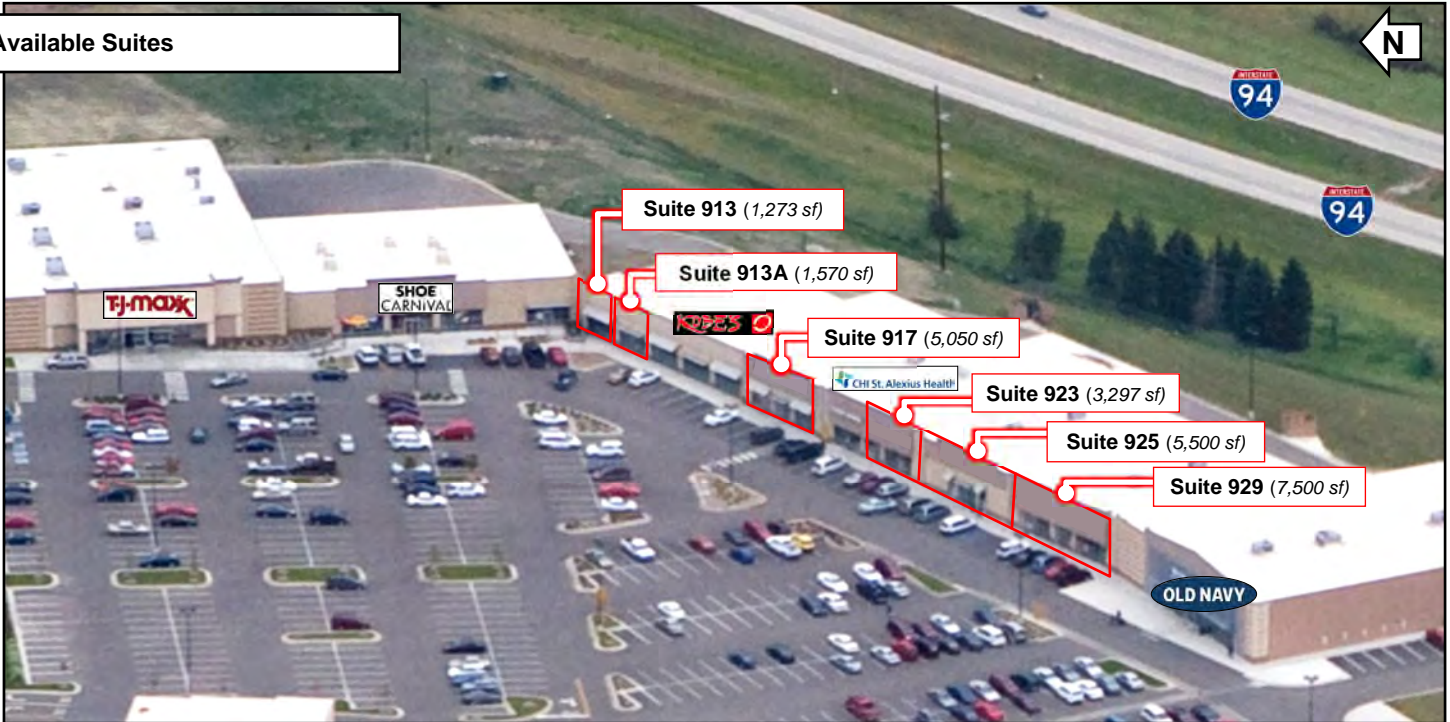
**Jill Duemeland, CCIM**  
CEO & President  
Phone: 701.221.9033  
[jill@duemelands.com](mailto:jill@duemelands.com)

**April Eide, CCIM**  
Vice President of Brokerage  
Direct: 701.223.5863  
[april@duemelands.com](mailto:april@duemelands.com)

# Property Aerials

Retail Space for Lease

## Available Suites



## Pinehurst Square Shopping Center



**Duemelands Commercial Real Estate**  
 301 E. Thayer Avenue - Bismarck, ND 58501  
 Phone: (701) 221-2222  
[www.duemelands.com](http://www.duemelands.com)

**Jill Duemeland, CCIM**  
 CEO & President  
 Phone: 701.221.9033  
[jill@duemelands.com](mailto:jill@duemelands.com)

**April Eide, CCIM**  
 Vice President of Brokerage  
 Direct: 701.223.5863  
[april@duemelands.com](mailto:april@duemelands.com)

# Storefront Pictures

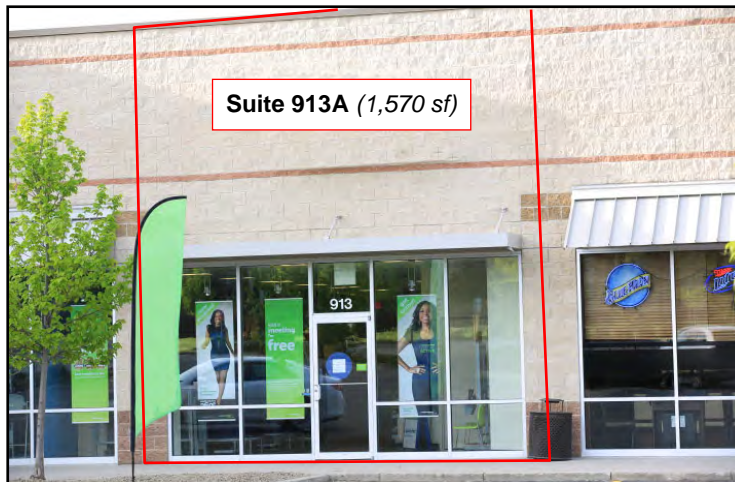
Retail Space for Lease



Suite 128 (1,675 sf)



Suite 913 (1,237 sf)



Suite 913A (1,570 sf)



Suite 917 (5,050 sf)



Suite 923 (3,297 sf)

Suite 925 (5,500 sf)

Suite 929 (7,500 sf)



**Duemelands Commercial Real Estate**  
301 E. Thayer Avenue - Bismarck, ND 58501  
Phone: (701) 221-2222  
[www.duemelands.com](http://www.duemelands.com)

**Jill Duemeland, CCIM**  
CEO & President  
Phone: 701.221.9033  
[jill@duemelands.com](mailto:jill@duemelands.com)

**April Eide, CCIM**  
Vice President of Brokerage  
Direct: 701.223.5863  
[april@duemelands.com](mailto:april@duemelands.com)

# Floorplan - Suite 128

Retail Space for Lease



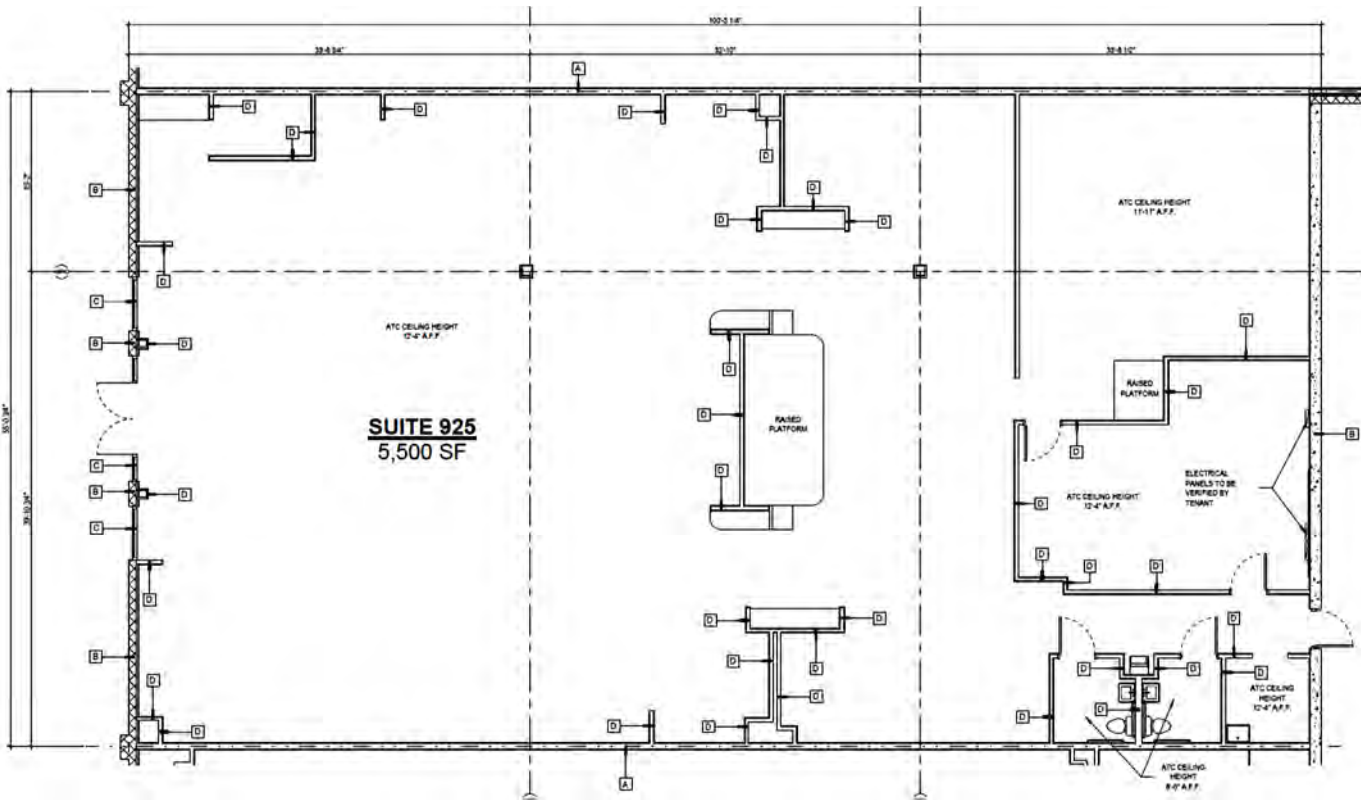
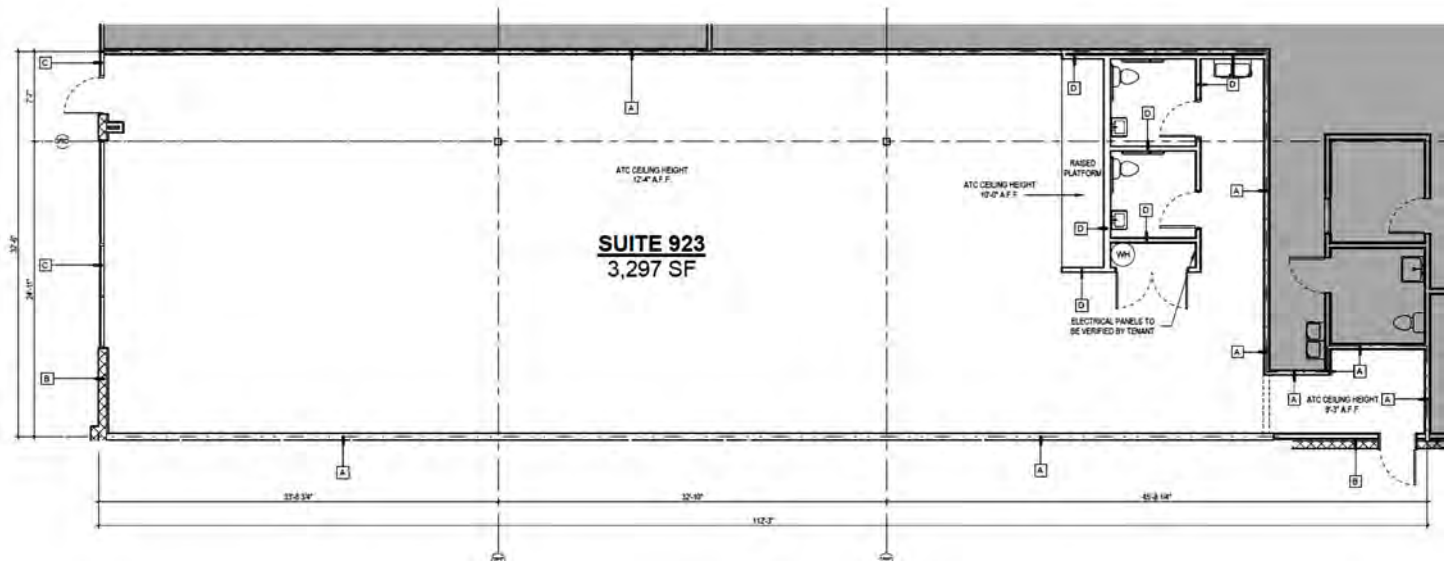
**Duemelands Commercial Real Estate**  
301 E. Thayer Avenue - Bismarck, ND 58501  
Phone: (701) 221-2222  
[www.duemelands.com](http://www.duemelands.com)

**Jill Duemeland, CCIM**  
CEO & President  
Phone: 701.221.9033  
[jill@duemelands.com](mailto:jill@duemelands.com)

**April Eide, CCIM**  
Vice President of Brokerage  
Direct: 701.223.5863  
[april@duemelands.com](mailto:april@duemelands.com)

# Floorplan - Suites 923 & 925

Retail Space for Lease



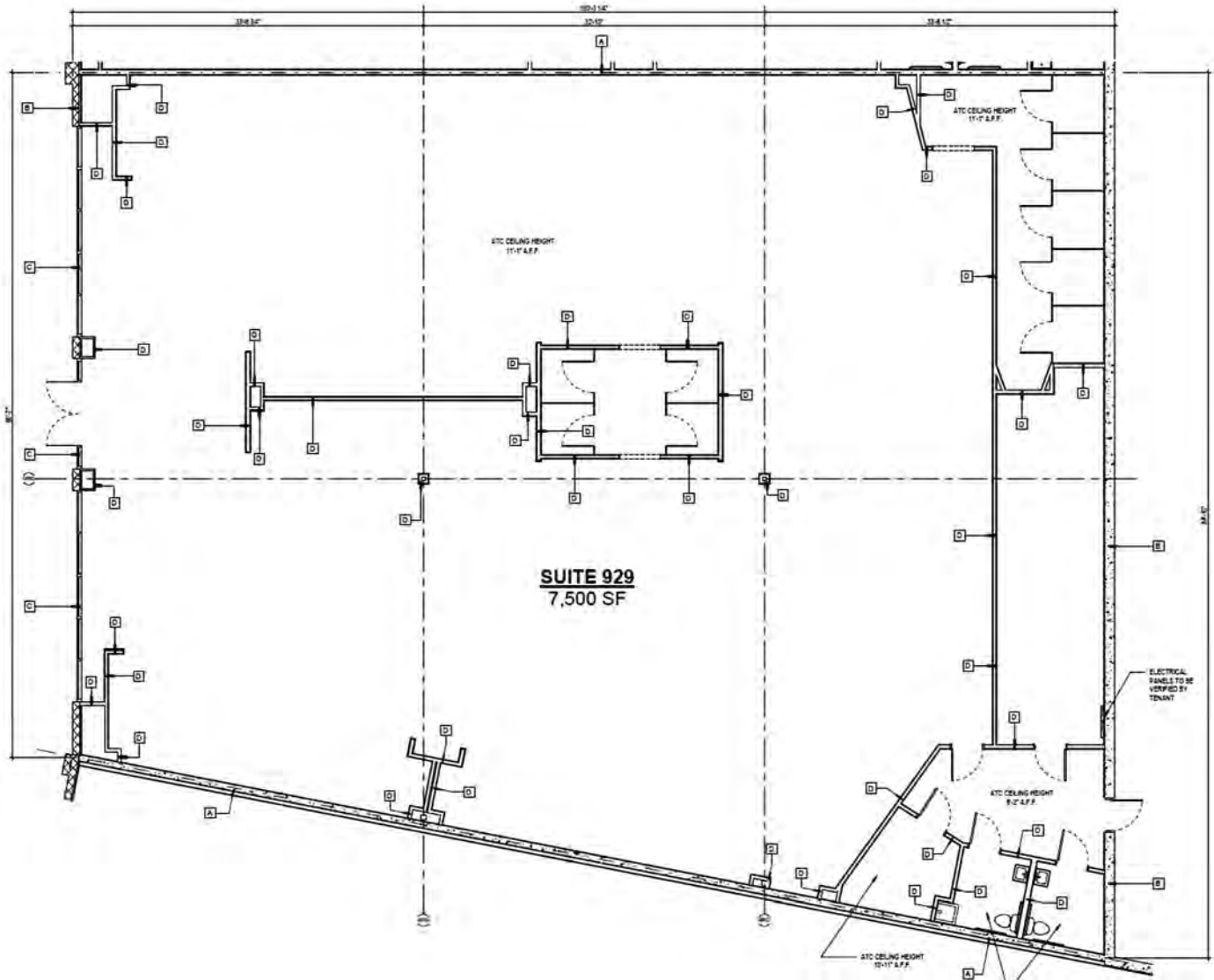
**Duemelands Commercial Real Estate**  
301 E. Thayer Avenue - Bismarck, ND 58501  
Phone: (701) 221-2222  
[www.duemelands.com](http://www.duemelands.com)

**Jill Duemeland, CCIM**  
CEO & President  
Phone: 701.221.9033  
[jill@duemelands.com](mailto:jill@duemelands.com)

**April Eide, CCIM**  
Vice President of Brokerage  
Direct: 701.223.5863  
[april@duemelands.com](mailto:april@duemelands.com)

# Floorplan - Suite 929

Retail Space for Lease



**SUITE 929**  
7,500 SF



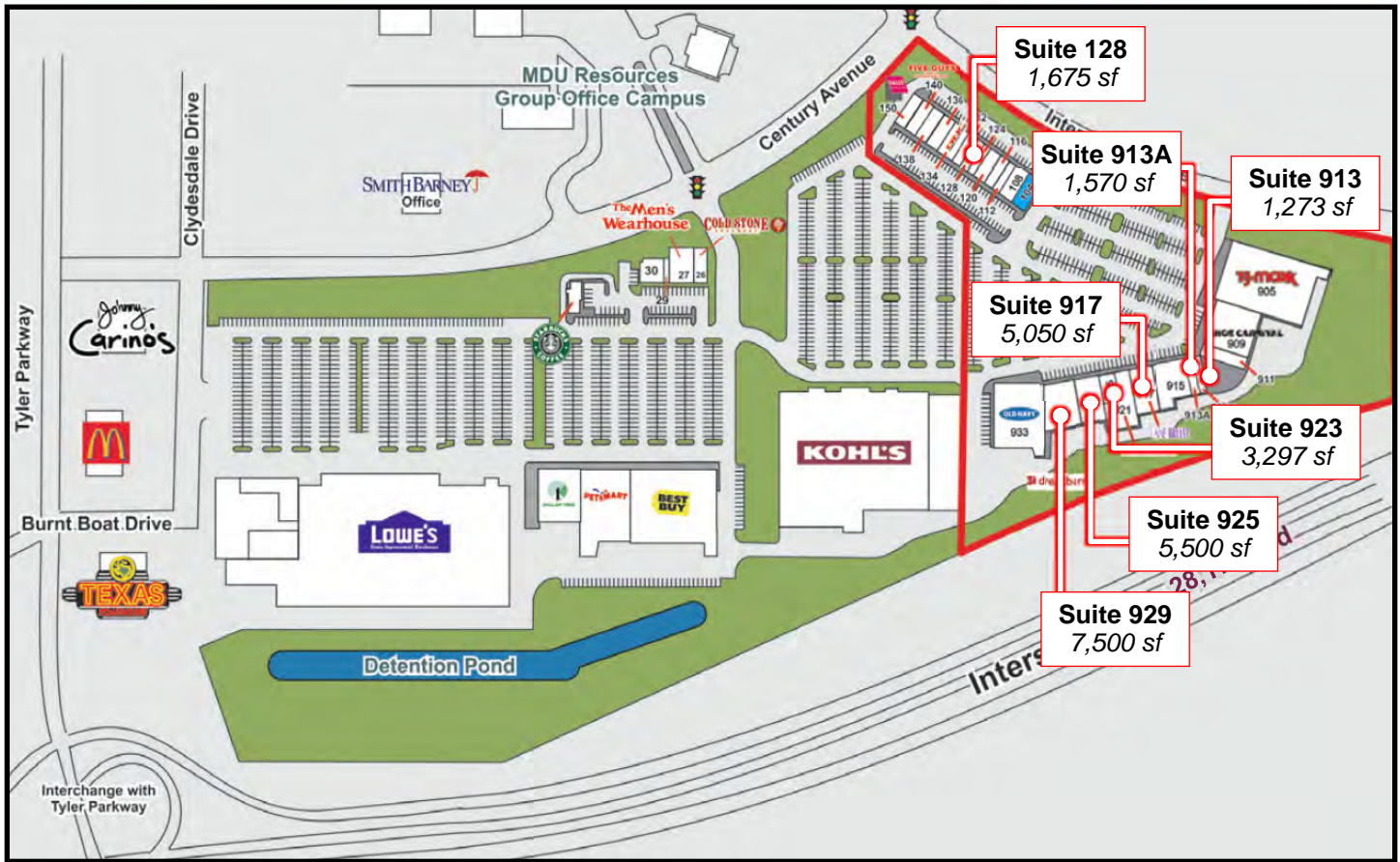
**Duemelands Commercial Real Estate**  
301 E. Thayer Avenue - Bismarck, ND 58501  
Phone: (701) 221-2222  
[www.duemelands.com](http://www.duemelands.com)

**Jill Duemeland, CCIM**  
CEO & President  
Phone: 701.221.9033  
[jill@duemelands.com](mailto:jill@duemelands.com)

**April Eide, CCIM**  
Vice President of Brokerage  
Direct: 701.223.5863  
[april@duemelands.com](mailto:april@duemelands.com)

# Tenant List

Retail Space for Lease



**Suite 128**  
1,675 sf

**Suite 913A**  
1,570 sf

**Suite 913**  
1,273 sf

**Suite 917**  
5,050 sf

**Suite 923**  
3,297 sf

**Suite 925**  
5,500 sf

**Suite 929**  
7,500 sf

Suite	Tenant	SF	Suite	Tenant	SF
104	SolidCore	2,000	150	Sally Beauty	1,500
106	Leased	2,925	905	TJ Maxx	26,000
108	Blue Apple Walk-in Clinic	1,350	909	Shoe Carnival	10,000
112	Nardello's	1,513	911	Northern Lights Physical Therapy	2,450
116	Apricot Lane Boutique	2,058	913	<b>Available</b>	1,273
120	Salt Caves Wellness Relaxation	1,288	913A	<b>Available</b>	1,570
124	Classy Nails	1,425	915	Kobe's Japanese Cuisine	6,245
128	<b>Available</b>	1,675	917	<b>Available</b>	5,050
132	Martinson Family Dental	3,000	921	CHI Urgent Care	4,651
134	Leased	1,610	923	<b>Available</b>	3,297
136	Edible Arrangements	1,275	925	<b>Available</b>	5,500
138	Jimmy John's	1,333	929	<b>Available</b>	7,500
140	Five Guy's Burgers & Fries	2,300	933	Old Navy	15,364



**Duemelands Commercial Real Estate**  
301 E. Thayer Avenue - Bismarck, ND 58501  
Phone: (701) 221-2222  
[www.duemelands.com](http://www.duemelands.com)

**Jill Duemeland, CCIM**  
CEO & President  
Phone: 701.221.9033  
[jill@duemelands.com](mailto:jill@duemelands.com)

**April Eide, CCIM**  
Vice President of Brokerage  
Direct: 701.223.5863  
[april@duemelands.com](mailto:april@duemelands.com)

The data and information contained herein, while not guaranteed, have been obtained from sources we believe to be reliable. We make no warranties, whether expressed or implied, as to the accuracy or completeness of the information. Any reference to square footage and monetary values are considered approximations. Buyer or Lessor should conduct their own analysis and rely on their own investigative results.