



1420 24<sup>th</sup> Avenue SW - Minot, North Dakota



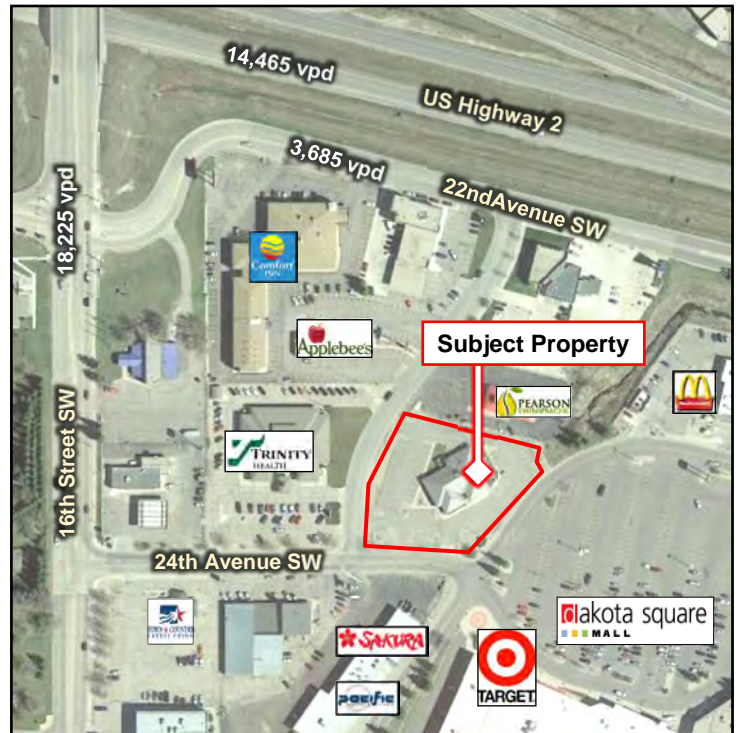
## Lease Rate Negotiable

### Property Highlights

- ◆ Up to 1,512 sf available to Lease
- ◆ Newly remodeled
- ◆ Abundant parking
- ◆ Pylon & building signage available
- ◆ Potential uses include offices, retail, or medical

### Area Highlights

- ◆ Located on Dakota Square Mall Ring Road
- ◆ Easy access to 16<sup>th</sup> Street SW & Hwy 2
- ◆ 18,225 vpd on 16th Street SW



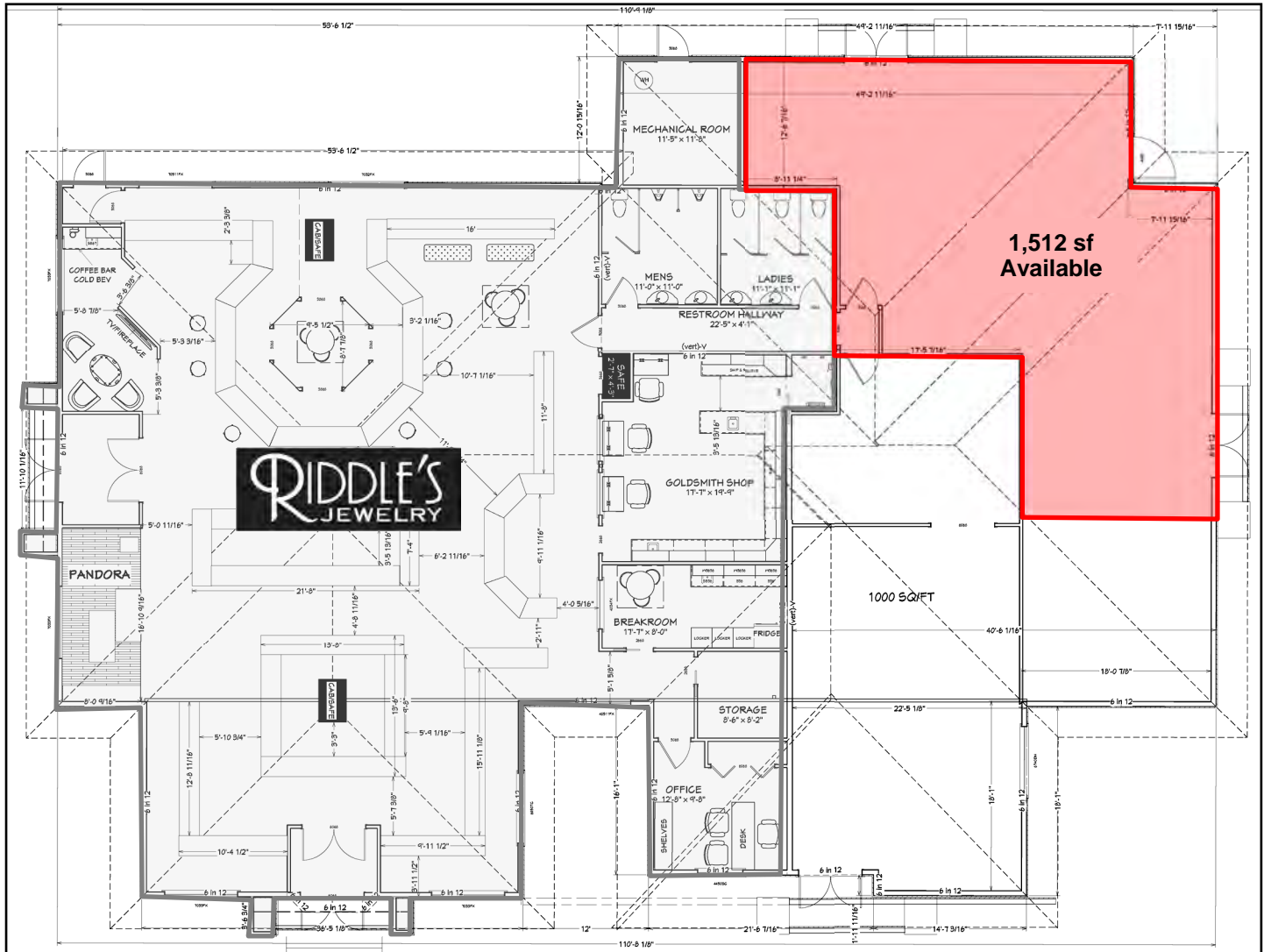
**Duemelands Commercial Real Estate**  
 301 E. Thayer Avenue - Bismarck, ND 58501  
 Phone: (701) 221-2222  
[www.duemelands.com](http://www.duemelands.com)

**Jill Duemeland, CCIM**  
 CEO & President  
 Phone: 701.221.9033  
[jill@duemelands.com](mailto:jill@duemelands.com)

**April Eide, CCIM**  
 Vice President of Brokerage  
 Direct: 701.223.5863  
[april@duemelands.com](mailto:april@duemelands.com)

# Building Floorplan

Office | Retail | Medical



**Duemelands Commercial Real Estate**  
 301 E. Thayer Avenue - Bismarck, ND 58501  
 Phone: (701) 221-2222  
[www.duemelands.com](http://www.duemelands.com)

**Jill Duemeland, CCIM**  
 CEO & President  
 Phone: 701.221.9033  
[jill@duemelands.com](mailto:jill@duemelands.com)

**April Eide, CCIM**  
 Vice President of Brokerage  
 Direct: 701.223.5863  
[april@duemelands.com](mailto:april@duemelands.com)



# Property Location Aerial

Office | Retail | Medical

Minot, North Dakota



**Duemelands Commercial Real Estate**  
 301 E. Thayer Avenue - Bismarck, ND 58501  
 Phone: (701) 221-2222  
[www.duemelands.com](http://www.duemelands.com)

**Jill Duemeland, CCIM**  
 CEO & President  
 Phone: 701.221.9033  
[jill@duemelands.com](mailto:jill@duemelands.com)

**April Eide, CCIM**  
 Vice President of Brokerage  
 Direct: 701.223.5863  
[april@duemelands.com](mailto:april@duemelands.com)

The data and information contained herein, while not guaranteed, have been obtained from sources we believe to be reliable. We make no warranties, whether expressed or implied, as to the accuracy or completeness of the information. Any reference to square footage and monetary values are considered approximations. Buyer or Lessor should conduct their own analysis and rely on their own investigative results.