

Warehouse for Sale or Lease



DUEMELANDS
COMMERCIAL REAL ESTATE

6500 2nd Avenue SE - Minot, North Dakota



Sale Price

- ◆ **24,000 sf Building:** \$ 2,300,000
- ◆ **4.56 acres:** \$ 850,000

Lease Rate

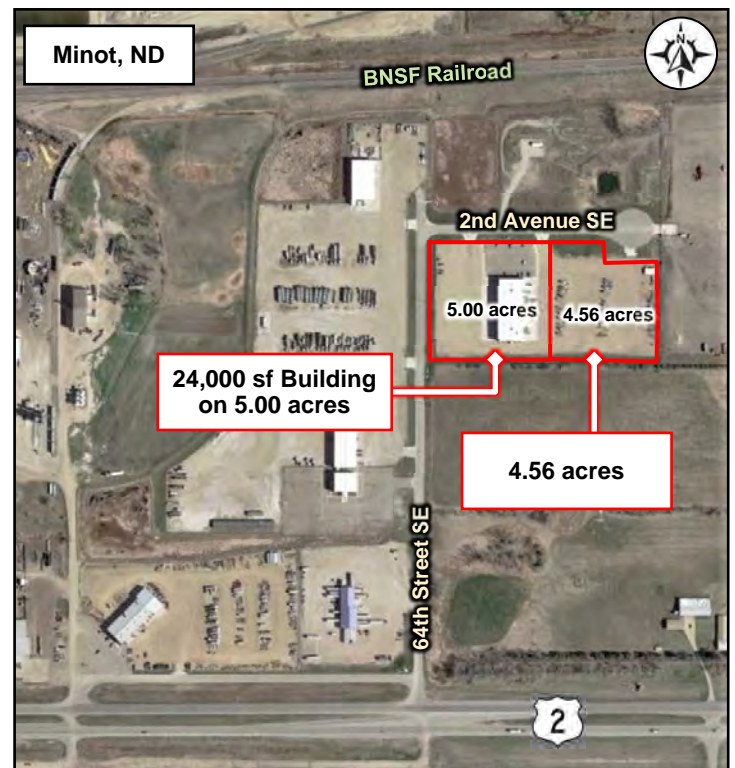
- ◆ **24,000 sf Building:** \$ 10.00 psf

Building Information

- ◆ 3,000 sf office w/ AC & heat
- ◆ 5-ton crane
- ◆ Separate wash bay
- ◆ (16) 16'x16' overhead doors
- ◆ Built in 2012

Lot Information

- ◆ Zoned MICU - Light Industrial Conditional
- ◆ Fenced lot w/ secure gate & yard lights



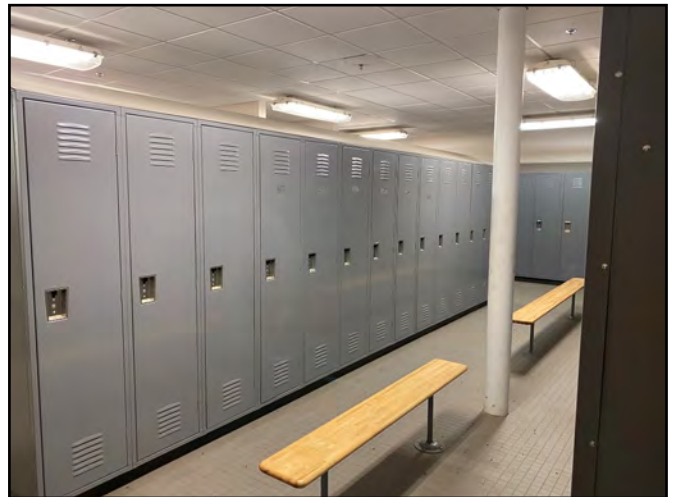
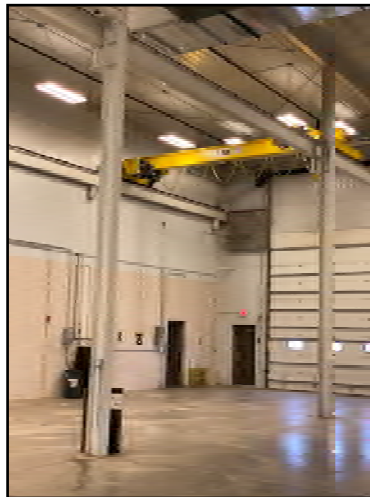
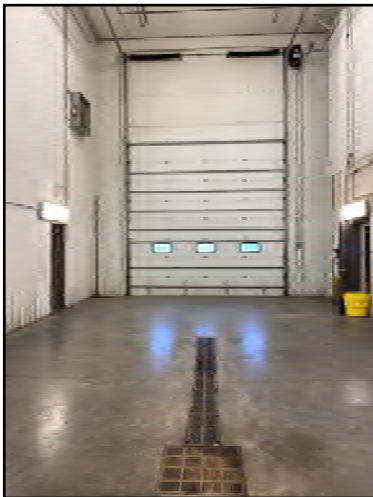
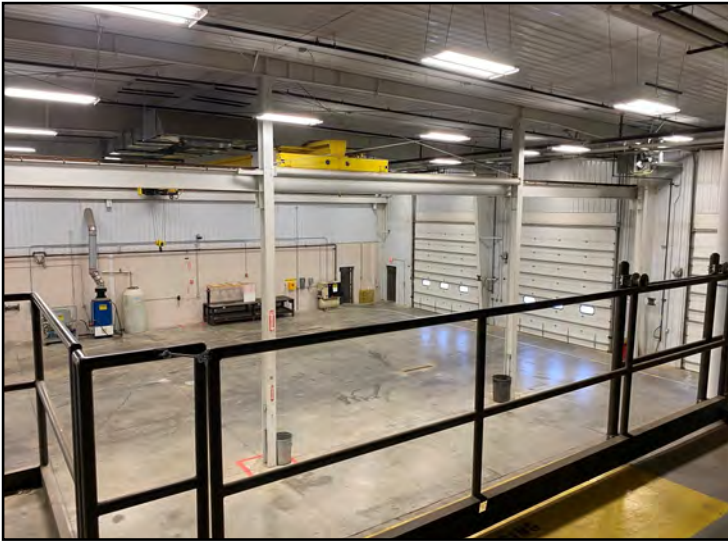
Duemelands Commercial Real Estate
301 E. Thayer Avenue - Bismarck, ND 58501
Phone: (701) 221-2222
www.duemelands.com

Jill Duemeland, CCIM
CEO & President
Phone: 701.221.9033
jill@duemelands.com

April Eide, CCIM
Vice President of Brokerage
Direct: 701.223.5863
april@duemelands.com

Interior Pictures

Warehouse for Sale or Lease



Duemelands Commercial Real Estate
301 E. Thayer Avenue - Bismarck, ND 58501
Phone: (701) 221-2222
www.duemelands.com

Jill Duemeland, CCIM
CEO & President
Phone: 701.221.9033
jill@duemelands.com

April Eide, CCIM
Vice President of Brokerage
Direct: 701.223.5863
april@duemelands.com

The data and information contained herein, while not guaranteed, have been obtained from sources we believe to be reliable. We make no warranties, whether expressed or implied, as to the accuracy or completeness of the information. Any reference to square footage and monetary values are considered approximations. Buyer or Lessee should conduct their own analysis and rely on their own investigative results.

Exterior Pictures

Warehouse for Sale or Lease



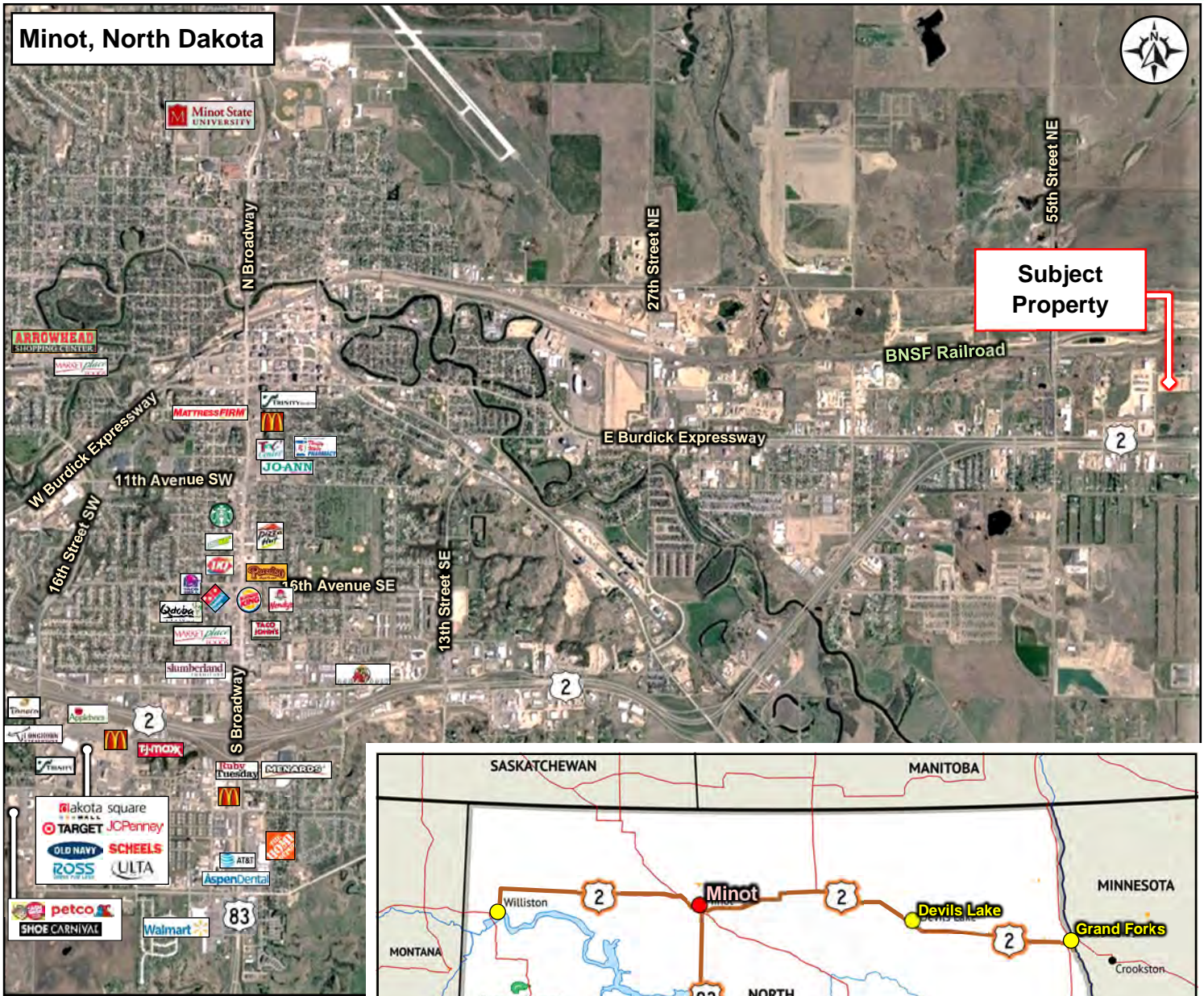
Duemelands Commercial Real Estate
301 E. Thayer Avenue - Bismarck, ND 58501
Phone: (701) 221-2222
www.duemelands.com

Jill Duemeland, CCIM
CEO & President
Phone: 701.221.9033
jill@duemelands.com

April Eide, CCIM
Vice President of Brokerage
Direct: 701.223.5863
april@duemelands.com

Property Aerial

Warehouse for Sale or Lease



Duemelands Commercial Real Estate
301 E. Thayer Avenue - Bismarck, ND 58501
Phone: (701) 221-2222
www.duemelands.com

Jill Duemeland, CCIM
CEO & President
Phone: 701.221.9033
jill@duemelands.com

April Eide, CCIM
Vice President of Brokerage
Direct: 701.223.5863
april@duemelands.com

The data and information contained herein, while not guaranteed, have been obtained from sources we believe to be reliable. We make no warranties, whether expressed or implied, as to the accuracy or completeness of the information. Any reference to square footage and monetary values are considered approximations. Buyer or Lessee should conduct their own analysis and rely on their own investigative results.