

Commercial Lot for Sale

L2, Hase 2nd Addition - Minot, ND



Sale Price: \$581,000

- ◆ \$1.82 psf

Property Information

- ◆ 7.33 acres (319,281 sf)
- ◆ Zoned C2 - General Commercial
- ◆ Lot 2, Hase 2nd Addition
- ◆ Parcel # AF01.032.000.0020

Location Information

- ◆ Rectangular lot - Approx. 389' x 826'
- ◆ Easy access to US Highway 83
- ◆ Located along 54th Avenue SE
- ◆ Outside Minot city limits



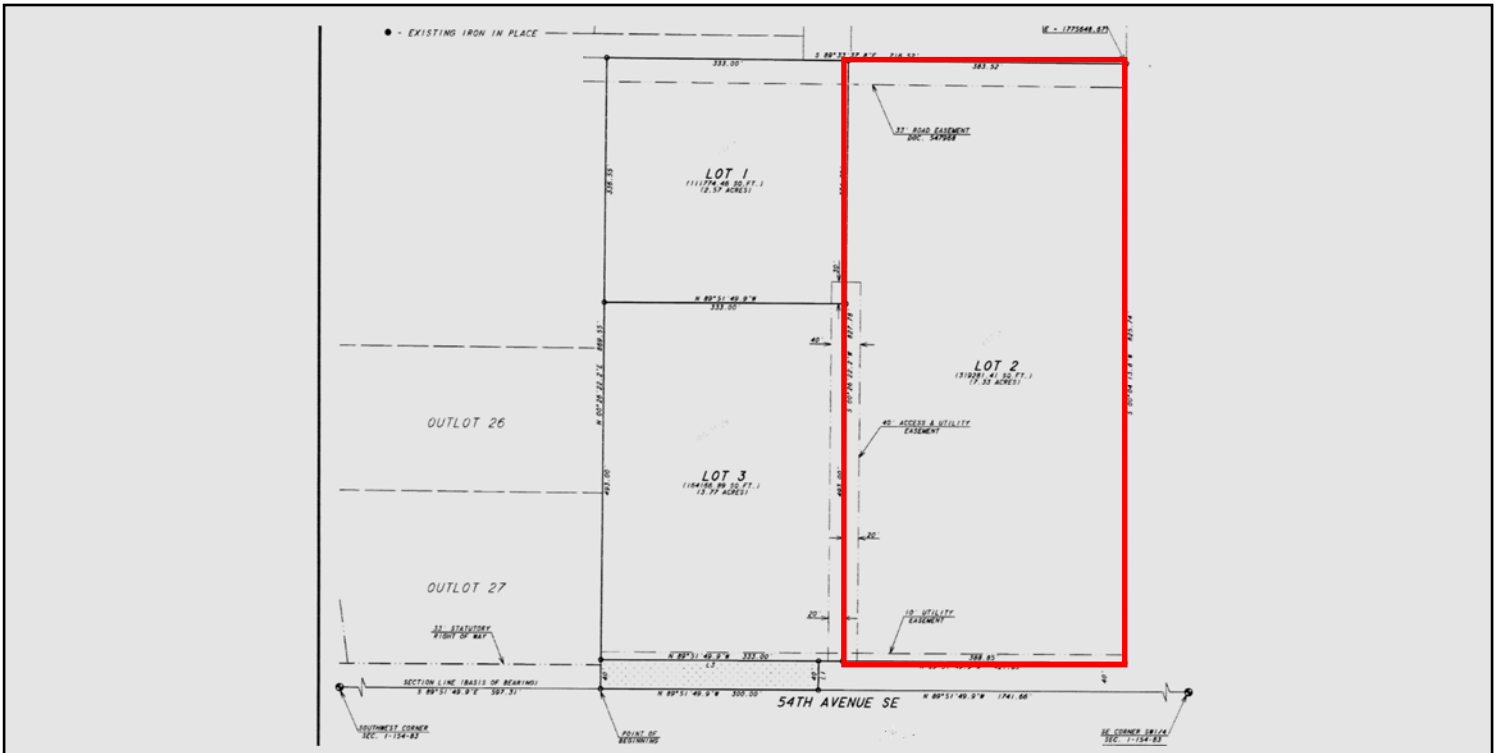
Duemelands Commercial Real Estate
301 E. Thayer Avenue - Bismarck, ND 58501
Phone: (701) 221-2222
www.duemelands.com

Jill Duemeland, CCIM
CEO & President
Phone: 701.221.9033
jill@duemelands.com

April Eide, CCIM
Vice President of Brokerage
Direct: 701.223.5863
april@duemelands.com

Property Plat

Commercial Lot



Duemelands Commercial Real Estate
301 E. Thayer Avenue - Bismarck, ND 58501
Phone: (701) 221-2222
www.duemelands.com

Jill Duemeland, CCIM
CEO & President
Phone: 701.221.9033
jill@duemelands.com

April Eide, CCIM
Vice President of Brokerage
Direct: 701.223.5863
april@duemelands.com