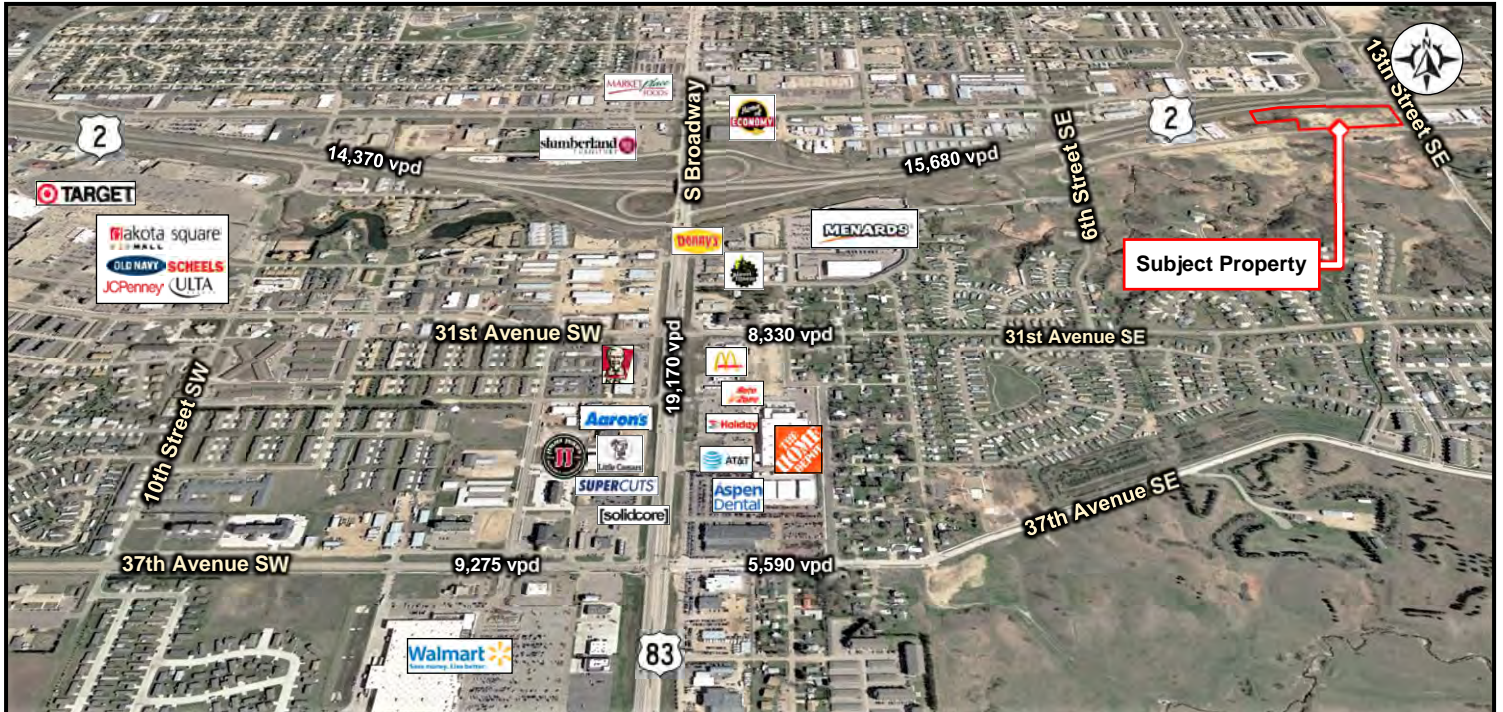


Commercial Lot for Sale

B2, Livingston's 7th Addition - Minot, ND



Sale Price: \$3,567,288

- ◆ \$12.00 psf

Property Information

- ◆ 6.82 acres (297,274 sf)
- ◆ Zoned C2 - General Commercial
- ◆ Block 2, Livingston's 7th Addition
- ◆ Parcel # MI36.D21.020.0000

Location Information

- ◆ Visibility from US Highway 2
- ◆ Located at intersection of 21st Avenue SE & 13th Street SE
- ◆ Easy access to signalized intersection of US Highway 2 & 13th Street SE



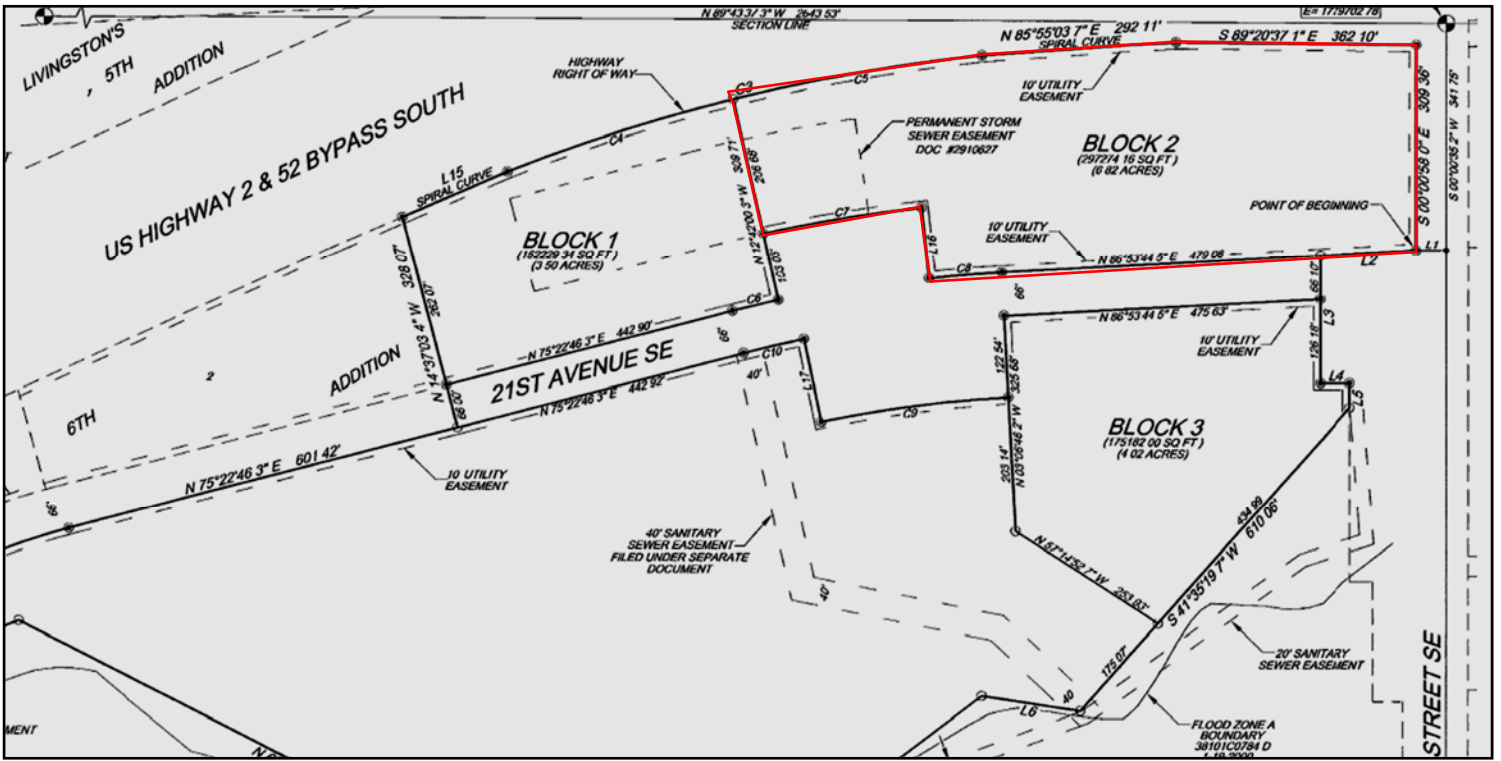
Duemelands Commercial Real Estate
301 E. Thayer Avenue - Bismarck, ND 58501
Phone: (701) 221-2222
www.duemelands.com

Jill Duemeland, CCIM
CEO & President
Phone: 701.221.9033
jill@duemelands.com

April Eide, CCIM
Vice President of Brokerage
Direct: 701.223.5863
april@duemelands.com

Property Plat

Commercial Lot



Duemelands Commercial Real Estate
 301 E. Thayer Avenue - Bismarck, ND 58501
 Phone: (701) 221-2222
www.duemelands.com

Jill Duemeland, CCIM
 CEO & President
 Phone: 701.221.9033
jill@duemelands.com

April Eide, CCIM
 Vice President of Brokerage
 Direct: 701.223.5863
april@duemelands.com

The data and information contained herein, while not guaranteed, have been obtained from sources we believe to be reliable. We make no warranties, whether expressed or implied, as to the accuracy or completeness of the information. Any reference to square footage and monetary values are considered approximations. Buyer or Lessee should conduct their own analysis and rely on their own investigative results.