

# Commercial Lot for Sale



L1, Livingston's 9th Addition - Minot, ND



**Sale Price: \$1,795,000**

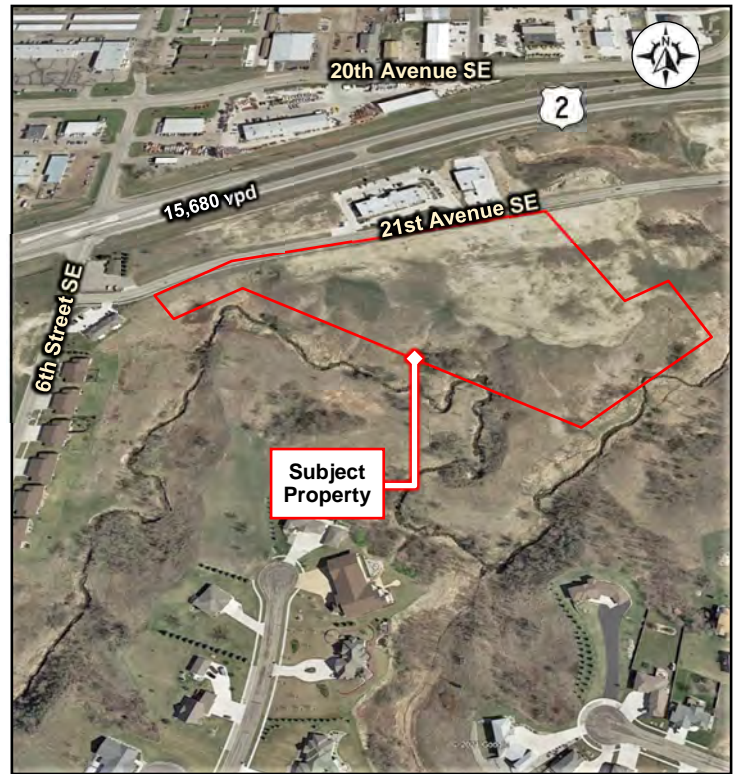
- ◆ \$3.46 psf

## Property Information

- ◆ 11.93 acres (519,457 sf)
- ◆ Zoned C2 - General Commercial
- ◆ Lot 1, Livingston's 9th Addition
- ◆ Parcel # MI36.F61.000.0010

## Location Information

- ◆ Located along 21st Avenue SE
- ◆ Close to Menards
- ◆ Easy access to US Highway 2, 13th Street SE, & S Broadway



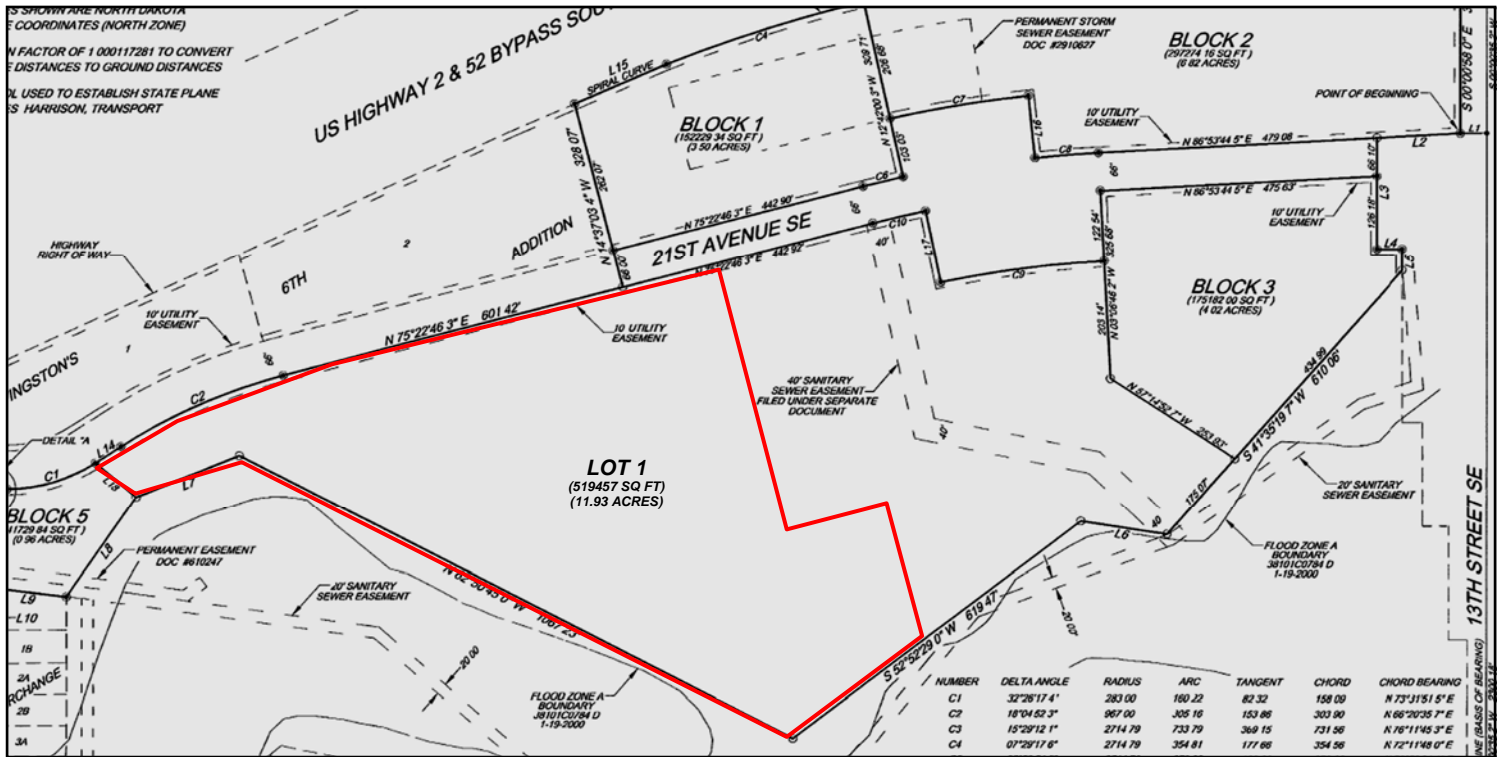
**Duemelands Commercial Real Estate**  
301 E. Thayer Avenue - Bismarck, ND 58501  
Phone: (701) 221-2222  
[www.duemelands.com](http://www.duemelands.com)

**Jill Duemeland, CCIM**  
CEO & President  
Phone: 701.221.9033  
[jill@duemelands.com](mailto:jill@duemelands.com)

**April Eide, CCIM**  
Vice President of Brokerage  
Direct: 701.223.5863  
[april@duemelands.com](mailto:april@duemelands.com)

# Property Plat

Commercial Lot



**Duemelands Commercial Real Estate**  
301 E. Thayer Avenue - Bismarck, ND 58501  
Phone: (701) 221-2222  
www.duemelands.com

**Jill Duemeland, CCIM**  
CEO & President  
Phone: (701) 221.9033  
jill@duemelands.com

**April Eide, CCIM**  
Vice President of Brokerage  
Direct: 701.223.5863  
april@duemelands.com