

Medical | Office Building for Sale



DUEMELANDS
COMMERCIAL REAL ESTATE

425 N 5th Street - Bismarck, North Dakota



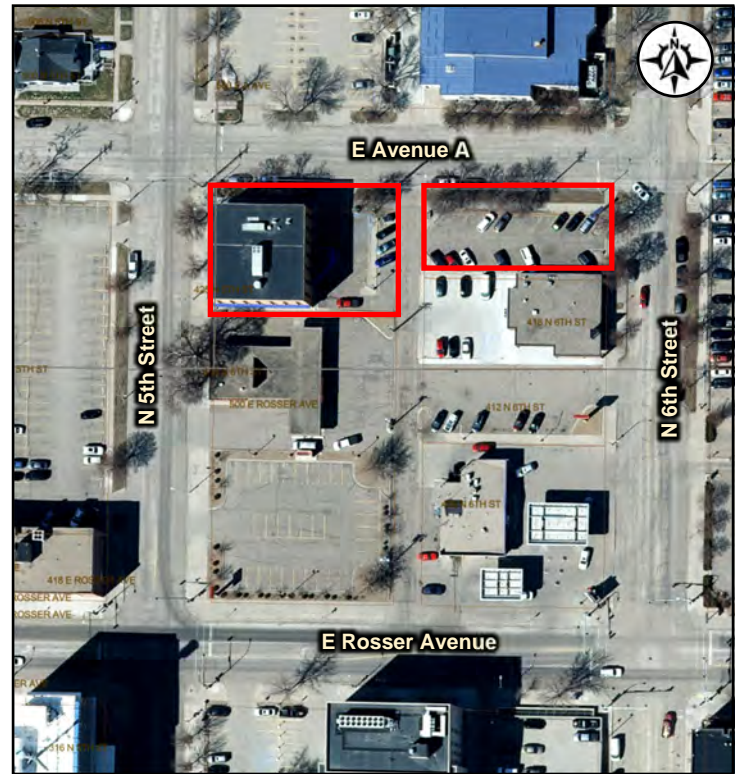
Sale Price: \$2,150,000 (\$139 psf)

Property Information

- ◆ 15,434 sf, 3-story building
- ◆ Additional Parking Lot
- ◆ Built in 1976— 1st Floor Remodel 2010
- ◆ Corner Lot - N 5th Street & E Avenue A
- ◆ Zoned DF - Downtown Fringe
- ◆ FCCU relocating to new Mandan location

Property Highlights

- ◆ Drive thru
- ◆ Elevator
- ◆ Additional \$5,751 monthly income.
- ◆ Located within the Medical District
- ◆ Near Burleigh County Courthouse



Duemelands Commercial Real Estate
301 E. Thayer Avenue - Bismarck, ND 58501
Phone: (701) 221-2222
www.duemelands.com

Jill Duemeland, CCIM
CEO & President
Phone: 701.221.9033
jill@duemelands.com

April Eide, CCIM
Vice President of Brokerage
Direct: 701.223.5863
april@duemelands.com

Property Information

Medical | Office Building

Property Identification

Address:

425 N 5th Street
Bismarck, North Dakota

Legal Description:

Lot 1 less W10' & N30' of Lot 3 & all Lot 4
less E10' for alley
Block 25
Northern Pacific 2nd Addition
City of Bismarck
County of Burleigh
State of North Dakota

PID:

0020-025-025

Property Detail

Building Size:

15,434 sf

Built:

1976

Zoned:

DF - Downtown Fringe

Property Taxes / Specials:

Property Taxes (2020): \$23,459.13

Special Assessments:

None - but to be verified by Buyer

Property Aerial



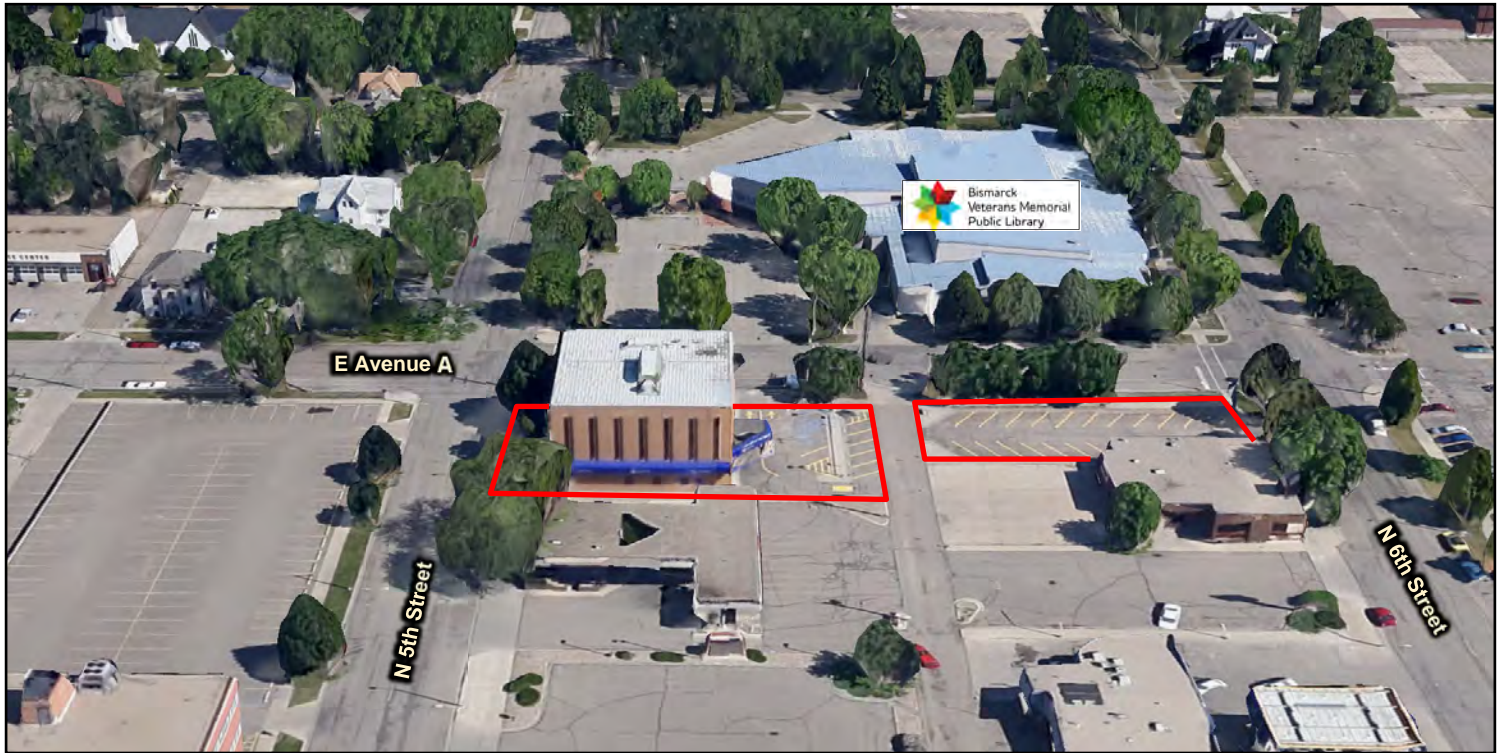
Duemelands Commercial Real Estate
301 E. Thayer Avenue - Bismarck, ND 58501
Phone: (701) 221-2222
www.duemelands.com

Jill Duemeland, CCIM
CEO & President
Phone: 701.221.9033
jill@duemelands.com

April Eide, CCIM
Vice President of Brokerage
Direct: 701.223.5863
april@duemelands.com

Property Aerial

Medical | Office Building



Area Demographics

	1-Mile Radius	3-Mile Radius	5-Mile Radius
Population:	13,387	66,140	91,010
Number of Households:	6,848	30,381	39,644
Average Household Income:	\$66,237	\$81,992	\$89,218
Population with Income \$50K+:	3,316	18,158	25,257
Percent of Population with Associates Degree +:	40.7%	47.4%	49.8%
Number of Employees:	24,658	62,132	71,902
Number of Businesses:	1,361	3,950	4,760



Duemelands Commercial Real Estate
 301 E. Thayer Avenue - Bismarck, ND 58501
 Phone: (701) 221-2222
www.duemelands.com

Jill Duemeland, CCIM
 CEO & President
 Phone: 701.221.9033
jill@duemelands.com

April Eide, CCIM
 Vice President of Brokerage
 Direct: 701.223.5863
april@duemelands.com

Exterior Pictures

Medical | Office Building



View from N 5th Street



View from E Avenue A



Drive-thru - East side of Building



Parking Lot



Duemelands Commercial Real Estate
301 E. Thayer Avenue - Bismarck, ND 58501
Phone: (701) 221-2222
www.duemelands.com

Jill Duemeland, CCIM
CEO & President
Phone: 701.221.9033
jill@duemelands.com

April Eide, CCIM
Vice President of Brokerage
Direct: 701.223.5863
april@duemelands.com