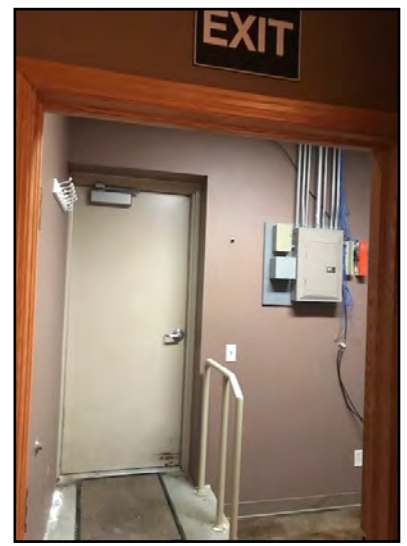
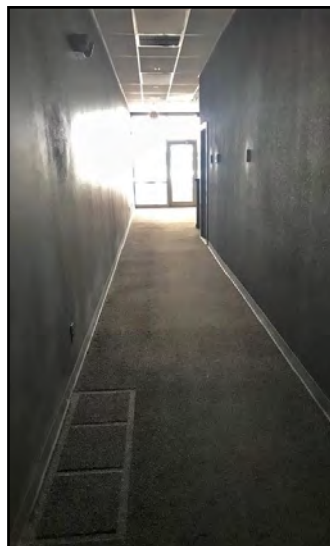
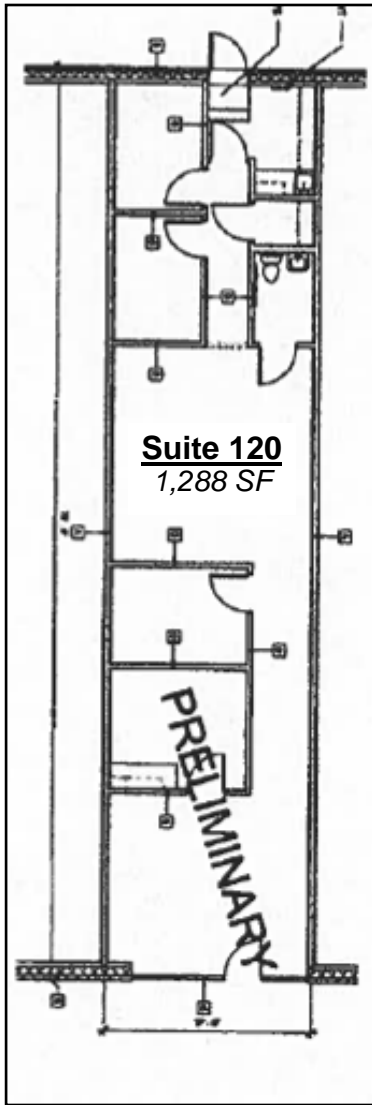


# Suite 120

Retail Space for Lease



**Duemelands Commercial Real Estate**  
301 E. Thayer Avenue - Bismarck, ND 58501  
Phone: (701) 221-2222  
[www.duemelands.com](http://www.duemelands.com)

**Jill Duemeland, CCIM**  
CEO & President  
Phone: 701.221.9033  
[jill@duemelands.com](mailto:jill@duemelands.com)

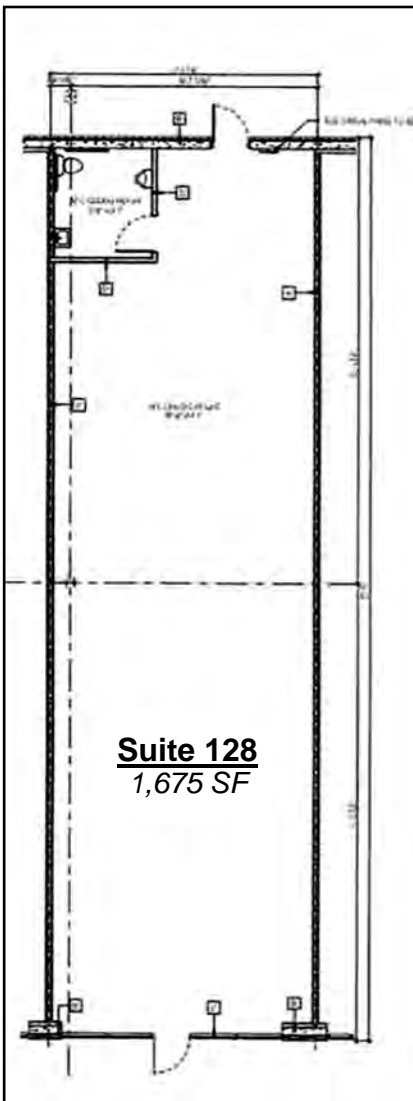
**April Eide, CCIM**  
Vice President of Brokerage  
Direct: 701.223.5863  
[april@duemelands.com](mailto:april@duemelands.com)

The data and information contained herein, while not guaranteed, have been obtained from sources we believe to be reliable. We make no warranties, whether expressed or implied, as to the accuracy or completeness of the information. Any reference to square footage and monetary values are considered approximations. Buyer or Lessor should conduct their own analysis and rely on their own investigative results.



## Suite 128

Retail Space for Lease



**Duemelands Commercial Real Estate**  
301 E. Thayer Avenue - Bismarck, ND 58501  
Phone: (701) 221-2222  
[www.duemelands.com](http://www.duemelands.com)

**Jill Duemeland, CCIM**  
CEO & President  
Phone: 701.221.9033  
[jill@duemelands.com](mailto:jill@duemelands.com)

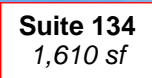
**April Eide, CCIM**  
Vice President of Brokerage  
Direct: 701.223.5863  
[april@duemelands.com](mailto:april@duemelands.com)

The data and information contained herein, while not guaranteed, have been obtained from sources we believe to be reliable. We make no warranties, whether expressed or implied, as to the accuracy or completeness of the information. Any reference to square footage and monetary values are considered approximations. Buyer or Lessor should conduct their own analysis and rely on their own investigative results.





## Retail Space for Lease



**Duemlands Commercial Real Estate**  
301 E. Thayer Avenue - Bismarck, ND 58501  
Phone: (701) 221-2222  
[www.duemlands.com](http://www.duemlands.com)

**Jill Duemeland, CCIM**  
*CEO & President*  
 Phone: 701.221.9033  
[jill@duemelands.com](mailto:jill@duemelands.com)

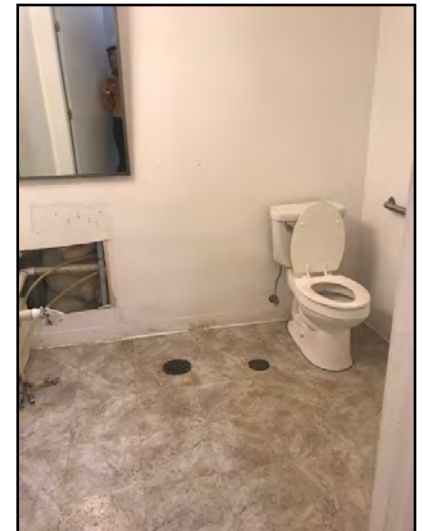
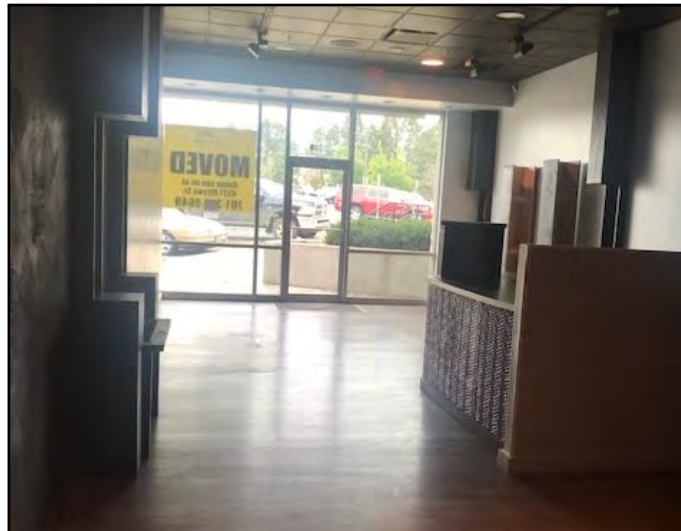
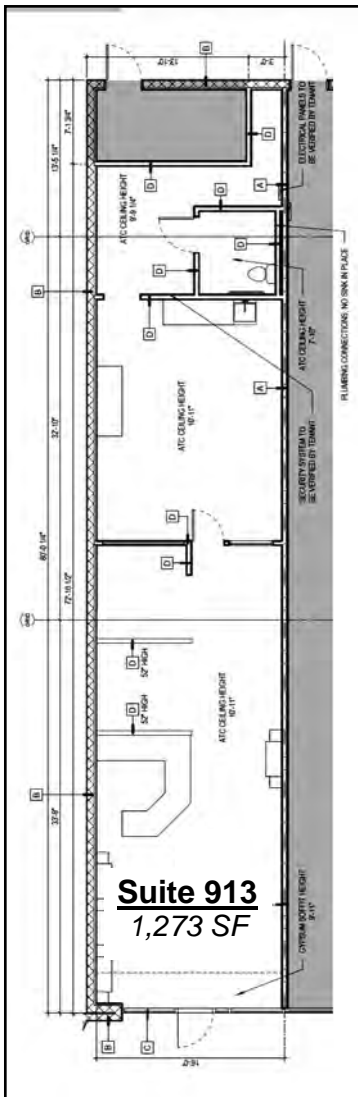
**April Eide, CCIM**  
*Vice President of Brokerage*  
Direct: 701.223.5863  
april@duemelands.com

The data and information contained herein, while not guaranteed, have been obtained from sources we believe to be reliable. We make no warranties, whether expressed or implied, as to the accuracy or completeness of the information. Any reference to square footage and monetary values are considered approximations. Buyer or Lessor should conduct their own analysis and rely on their own investigative results.



# Suite 913

Retail Space for Lease



**Duemelands Commercial Real Estate**  
301 E. Thayer Avenue - Bismarck, ND 58501  
Phone: (701) 221-2222  
[www.duemelands.com](http://www.duemelands.com)

**Jill Duemeland, CCIM**  
CEO & President  
Phone: 701.221.9033  
[jill@duemelands.com](mailto:jill@duemelands.com)

**April Eide, CCIM**  
Vice President of Brokerage  
Direct: 701.223.5863  
[april@duemelands.com](mailto:april@duemelands.com)

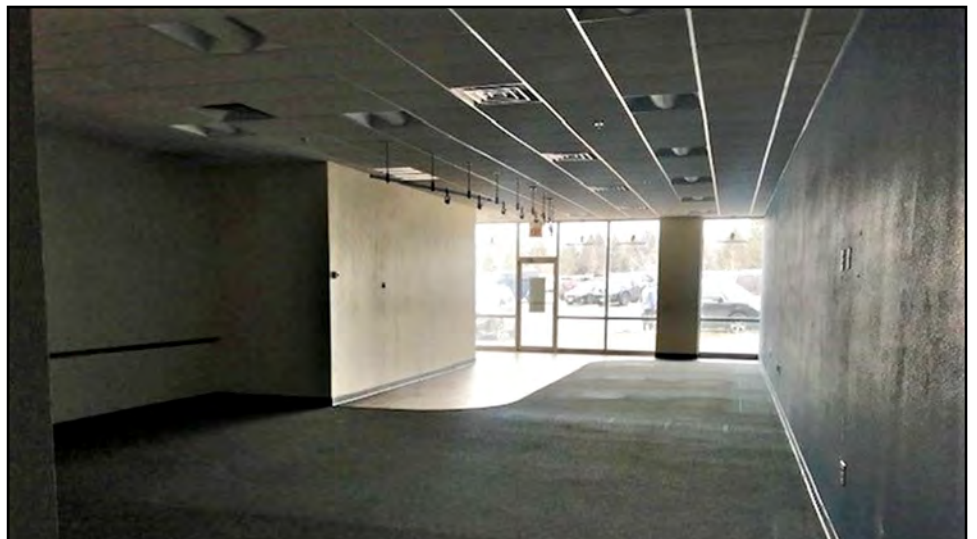
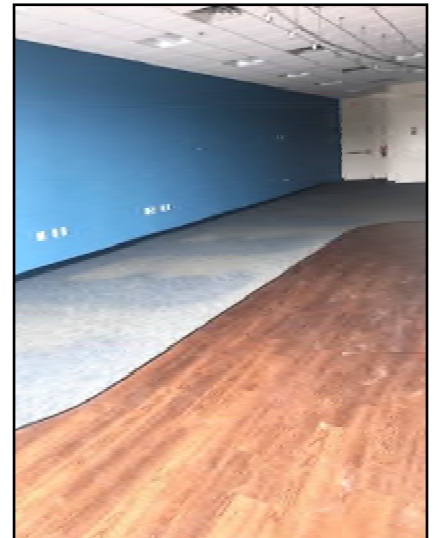
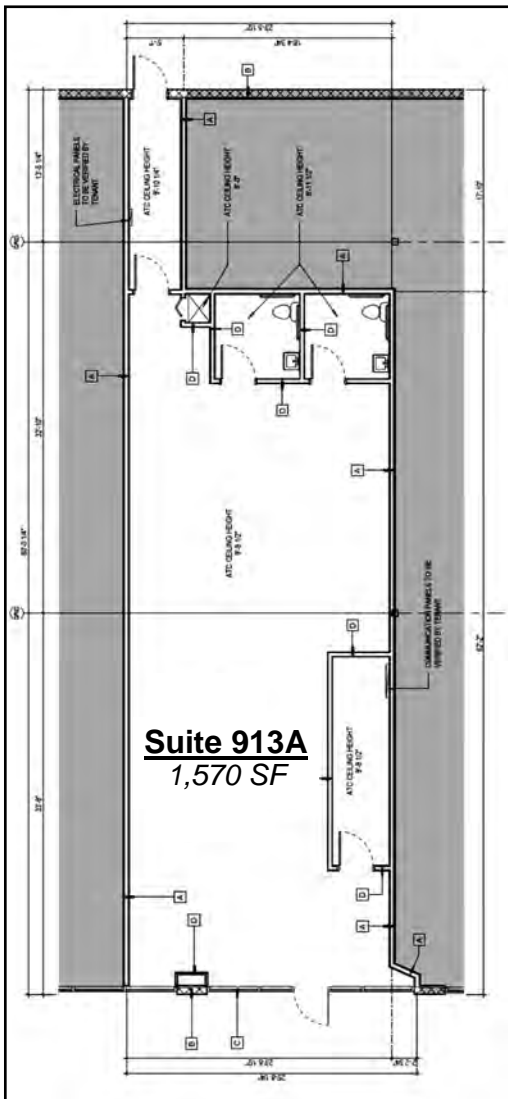
The data and information contained herein, while not guaranteed, have been obtained from sources we believe to be reliable. We make no warranties, whether expressed or implied, as to the accuracy or completeness of the information. Any reference to square footage and monetary values are considered approximations. Buyer or Lessor should conduct their own analysis and rely on their own investigative results.



# Suite 913A

Retail Space for Lease

Suite 913A  
1,570 sf



**Duemelands Commercial Real Estate**  
301 E. Thayer Avenue - Bismarck, ND 58501  
Phone: (701) 221-2222  
[www.duemelands.com](http://www.duemelands.com)

**Jill Duemeland, CCIM**  
CEO & President  
Phone: 701.221.9033  
[jill@duemelands.com](mailto:jill@duemelands.com)

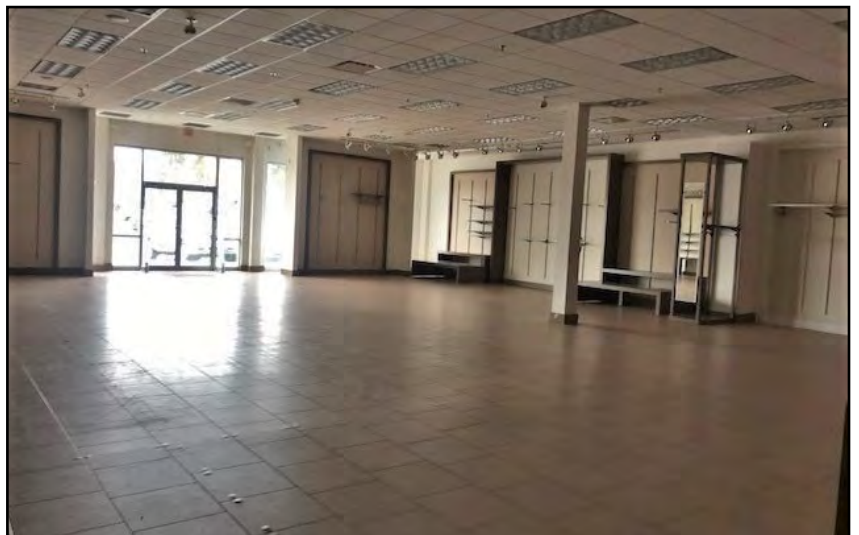
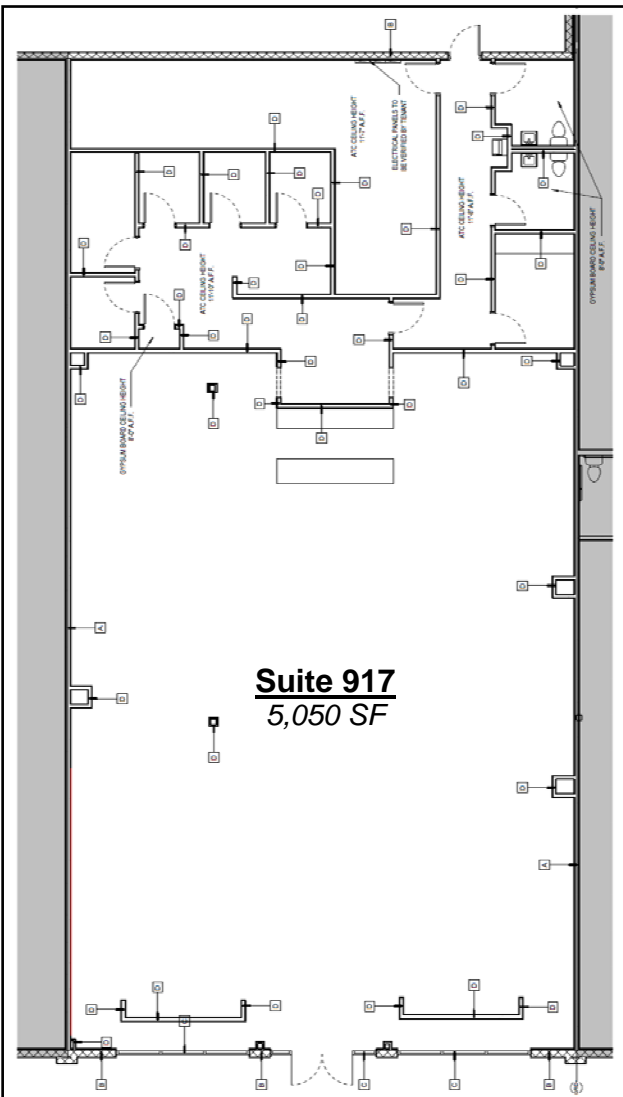
**April Eide, CCIM**  
Vice President of Brokerage  
Direct: 701.223.5863  
[april@duemelands.com](mailto:april@duemelands.com)

The data and information contained herein, while not guaranteed, have been obtained from sources we believe to be reliable. We make no warranties, whether expressed or implied, as to the accuracy or completeness of the information. Any reference to square footage and monetary values are considered approximations. Buyer or Lessor should conduct their own analysis and rely on their own investigative results.



# Suite 917

Retail Space for Lease



**Duemelands Commercial Real Estate**  
301 E. Thayer Avenue - Bismarck, ND 58501  
Phone: (701) 221-2222  
[www.duemelands.com](http://www.duemelands.com)

**Jill Duemeland, CCIM**  
CEO & President  
Phone: 701.221.9033  
[jill@duemelands.com](mailto:jill@duemelands.com)

**April Eide, CCIM**  
Vice President of Brokerage  
Direct: 701.223.5863  
[april@duemelands.com](mailto:april@duemelands.com)

The data and information contained herein, while not guaranteed, have been obtained from sources we believe to be reliable. We make no warranties, whether expressed or implied, as to the accuracy or completeness of the information. Any reference to square footage and monetary values are considered approximations. Buyer or Lessor should conduct their own analysis and rely on their own investigative results.