

# Retail Space for Lease

3306 S Broadway - Minot, North Dakota



## Call for Lease Rate

## Property Information

- ◆ Southside Plaza - 3,370 SF available
  - ◇ Suite 3 - 2,090 SF
  - ◇ Suite 4 - 1,280 SF
- ◆ Building and monument signage
- ◆ Excellent visibility
- ◆ \$5.87 psf CAM
- ◆ Co-tenants include:



## Area Businesses



**Duemelands Commercial Real Estate**  
301 E. Thayer Avenue - Bismarck, ND 58501  
Phone: (701) 221-2222  
[www.duemelands.com](http://www.duemelands.com)

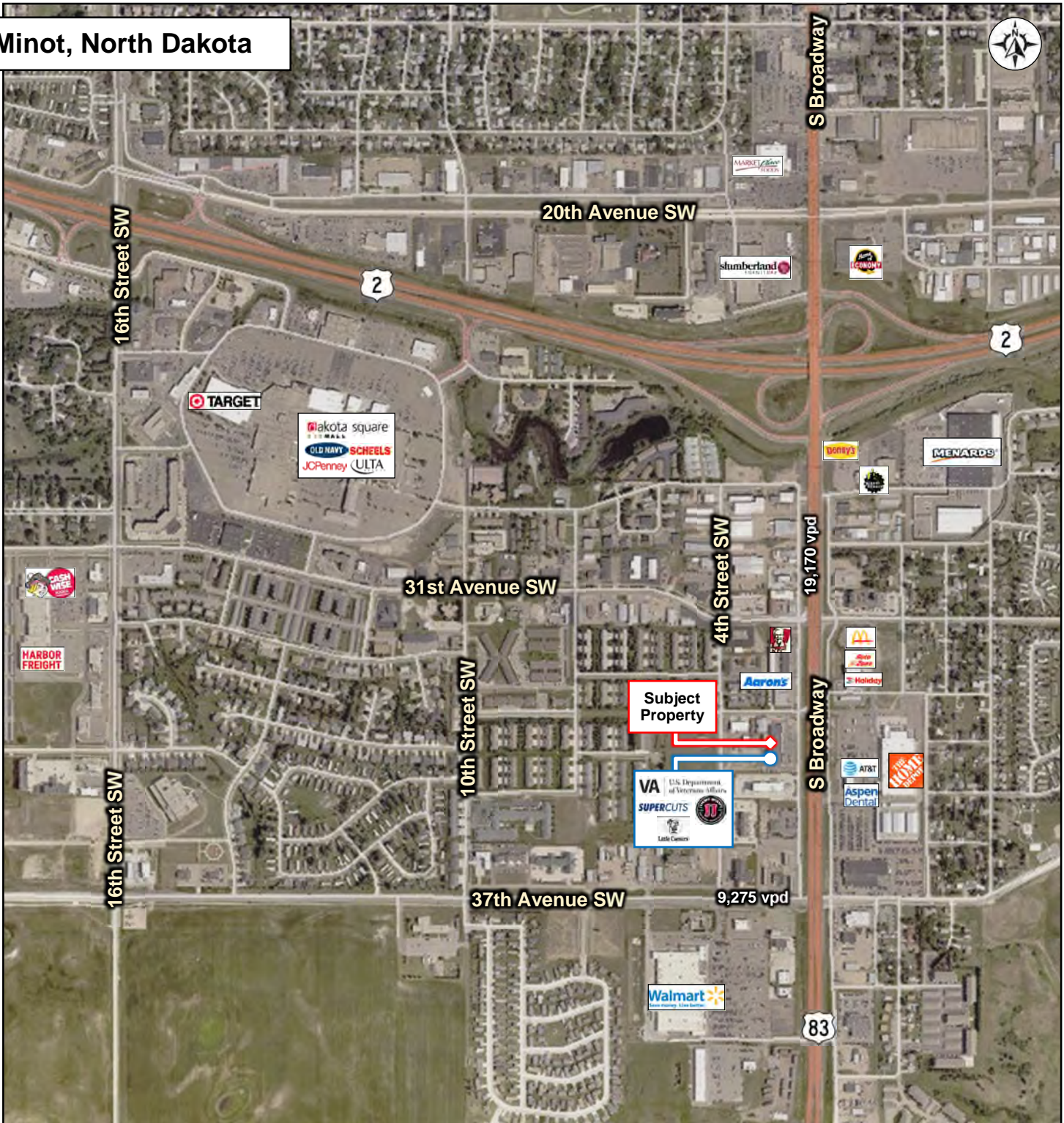
**Jill Duemeland, CCIM**  
CEO & President  
Phone: 701.221.9033  
[jill@duemelands.com](mailto:jill@duemelands.com)

**April Eide, CCIM**  
Vice President of Brokerage  
Direct: 701.223.5863  
[april@duemelands.com](mailto:april@duemelands.com)

# Property Aerial

Retail Space for Lease

Minot, North Dakota



**Duemelands Commercial Real Estate**  
301 E. Thayer Avenue - Bismarck, ND 58501  
Phone: (701) 221-2222  
[www.duemelands.com](http://www.duemelands.com)

**Jill Duemeland, CCIM**  
CEO & President  
Phone: 701.221.9033  
[jill@duemelands.com](mailto:jill@duemelands.com)

**April Eide, CCIM**  
Vice President of Brokerage  
Direct: 701.223.5863  
[april@duemelands.com](mailto:april@duemelands.com)

The data and information contained herein, while not guaranteed, have been obtained from sources we believe to be reliable. We make no warranties, whether expressed or implied, as to the accuracy or completeness of the information. Any reference to square footage and monetary values are considered approximations. Buyer or Lessee should conduct their own analysis and rely on their own investigative results.