

Restaurant Building for Sale



DUEMELANDS
COMMERCIAL REAL ESTATE

1319 9th Avenue NW - Williston, North Dakota



Sale Price Negotiable

Property Information

- ◆ 5,456 sf building
- ◆ 0.989 acres (43,070 sf)
- ◆ Built in 2013
- ◆ Monument sign
- ◆ Ample parking
- ◆ Equipment not included in sale

Location Information

- ◆ North of CHI St. Alexius Medical Center
- ◆ Off CanAm Highway / US Highway 2
- ◆ Corner of 9th Ave NW and 13th Ave W



Duemelands Commercial Real Estate
301 E. Thayer Avenue - Bismarck, ND 58501
Phone: (701) 221-2222
www.duemelands.com

Jill Duemeland, CCIM
CEO & President
Phone: 701.221.9033
jill@duemelands.com

April Eide, CCIM
Vice President of Brokerage
Direct: 701.223.5863
april@duemelands.com

Property Information

Restaurant Building for Sale

Property Identification

Address:

1319 9th Avenue NW
Williston, North Dakota

Legal Description:

Lot 3, Block 1
First International Bank Plaza
City of Williston
County of Williams
State of North Dakota

PID:

01-182-00-00-01-030

Property Details

Building Size:

5,456

Built:

2013

Lot Area:

0.989 acres (43,070 sf)

Occupancy:

Restaurant

Property Taxes:

\$15,016.77 (2021)

Special Assessment Balance:

None (To be verified by Buyer)



Area Demographics

Radius	1-Mile	3-Mile	5-Mile
Population:	10,480	29,559	31,418
Number of Households:	4,488	12,493	13,231
Average Household Income:	\$128,555	\$117,847	\$118,568
Households w/ \$50K+ Income:	3,303	9,054	9,622
Percent of Population w/ Assoc. Degree +:	38.6%	37.7%	38.1%
Number of Employees:	5,422	15,281	17,997
Number of Businesses:	472	1,467	1,663



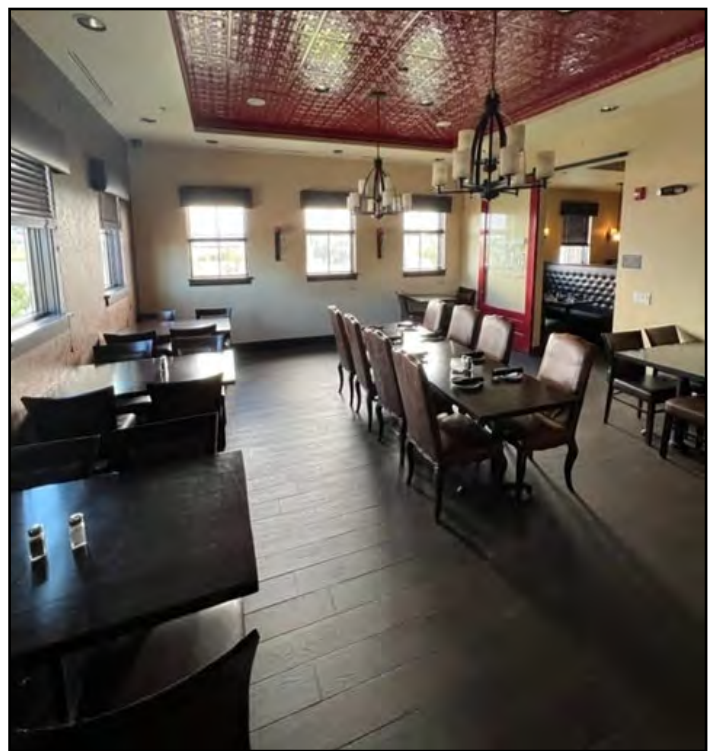
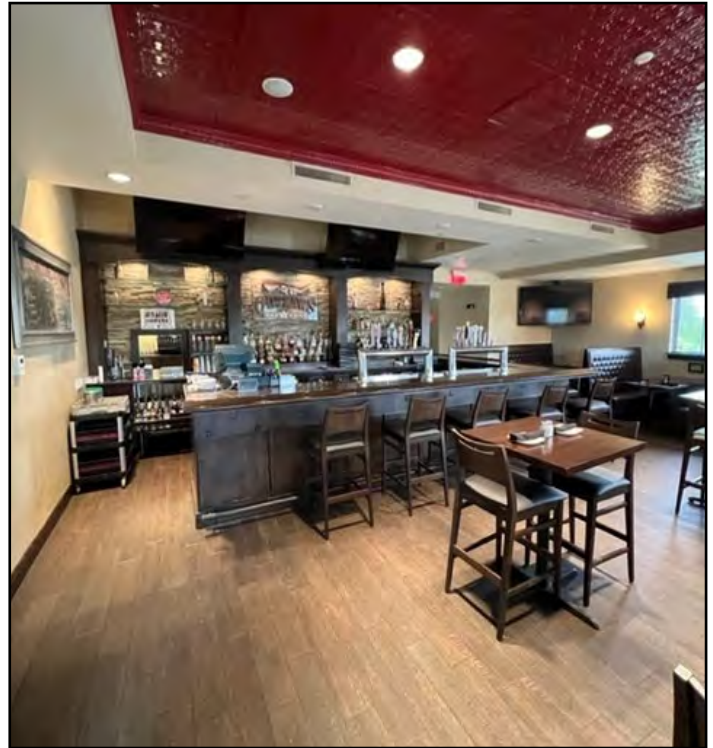
Duemelands Commercial Real Estate
301 E. Thayer Avenue - Bismarck, ND 58501
Phone: (701) 221-2222
www.duemelands.com

Jill Duemeland, CCIM
CEO & President
Phone: 701.221.9033
jill@duemelands.com

April Eide, CCIM
Vice President of Brokerage
Direct: 701.223.5863
april@duemelands.com

→ Pictures

Restaurant Building for Sale



Duemelands Commercial Real Estate
301 E. Thayer Avenue - Bismarck, ND 58501
Phone: (701) 221-2222
www.duemelands.com

Jill Duemeland, CCIM
CEO & President
Phone: 701.221.9033
jill@duemelands.com

April Eide, CCIM
Vice President of Brokerage
Direct: 701.223.5863
april@duemelands.com

The data and information contained herein, while not guaranteed, have been obtained from sources we believe to be reliable. We make no warranties, whether expressed or implied, as to the accuracy or completeness of the information. Any reference to square footage and monetary values are considered approximations. Buyer or Lessee should conduct their own analysis and rely on their own investigative results.

Location Aerial

Restaurant Building for Sale

Williston, North Dakota



Duemelands Commercial Real Estate
301 E. Thayer Avenue - Bismarck, ND 58501
Phone: (701) 221-2222
www.duemelands.com

Jill Duemeland, CCIM
CEO & President
Phone: 701.221.9033
jill@duemelands.com

April Eide, CCIM
Vice President of Brokerage
Direct: 701.223.5863
april@duemelands.com

The data and information contained herein, while not guaranteed, have been obtained from sources we believe to be reliable. We make no warranties, whether expressed or implied, as to the accuracy or completeness of the information. Any reference to square footage and monetary values are considered approximations. Buyer or Lessee should conduct their own analysis and rely on their own investigative results.