

# Midtown Plaza for Sale



**DUEMELANDS**  
COMMERCIAL REAL ESTATE

212 / 216 S Broadway - Minot, North Dakota



**Sale Price: \$1,650,000**

## Investment Details

- ◆ 10 tenants in building
- ◆ 2-story buildings
- ◆ 19,170 total sf
- ◆ 0.67 acre lot
- ◆ Large parking lot
- ◆ Zoned C3 - Central Business

## Area Highlights

- ◆ Located at the signalized intersection of S Broadway and 2nd Avenue SW
- ◆ Located 1 block north of Trinity Hospital and Health Center
- ◆ 19,275 vpd along S Broadway



**Duemelands Commercial Real Estate**  
301 E. Thayer Avenue - Bismarck, ND 58501  
Phone: (701) 221-2222  
[www.duemelands.com](http://www.duemelands.com)

**Jill Duemeland, CCIM**  
CEO & President  
Phone: 701.221.9033  
[jill@duemelands.com](mailto:jill@duemelands.com)

**April Eide, CCIM**  
Vice President of Brokerage  
Direct: 701.223.5863  
[april@duemelands.com](mailto:april@duemelands.com)

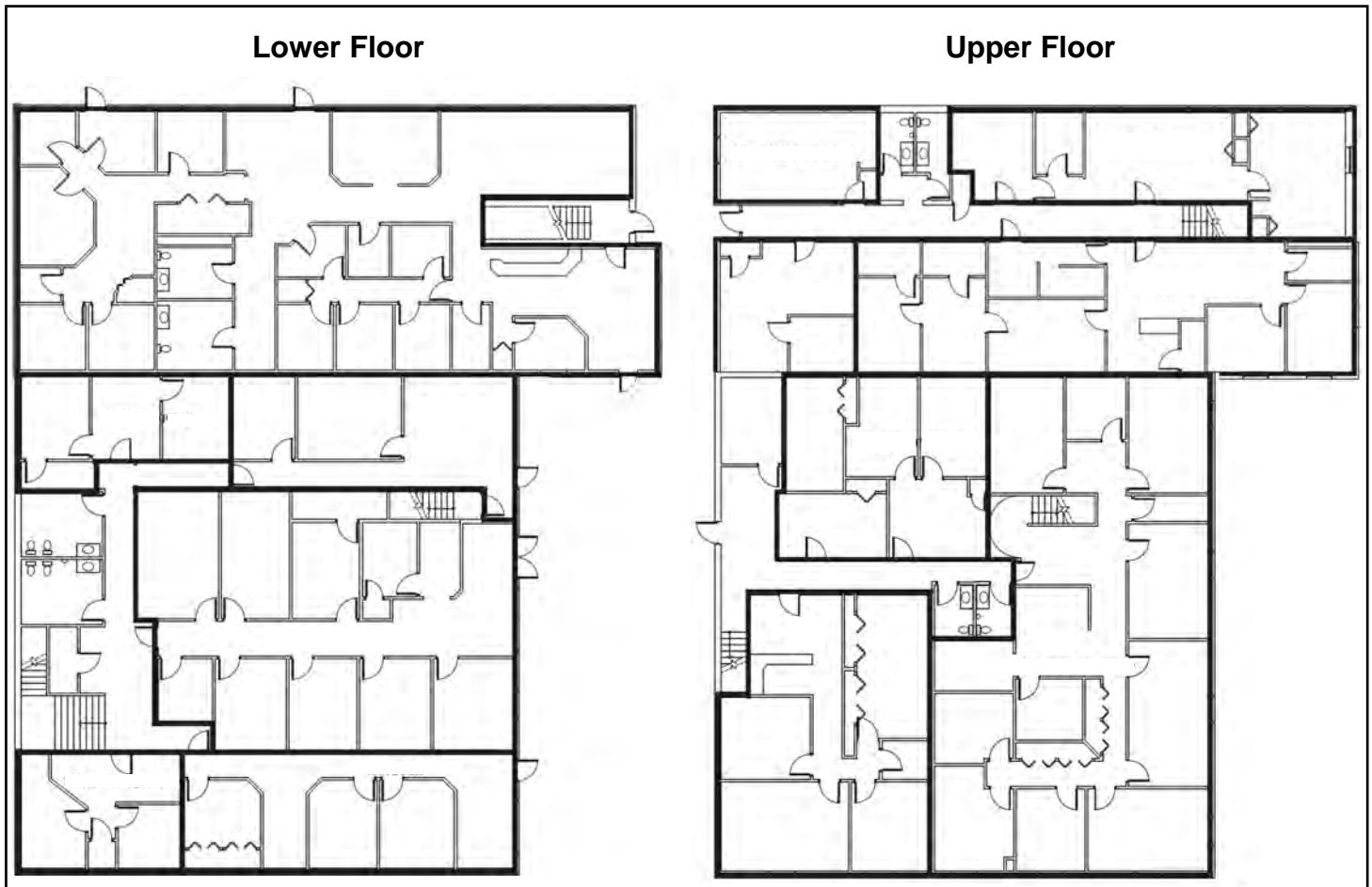
# Property Information

Midtown Plaza for Sale

## Property Details

- **212 S Broadway** (PID: MI23.021.110.0070)
  - ◇ 7,920 sf
  - ◇ Built in 1959
- **216 S Broadway** (PID: MI23.021.110.0100)
  - ◇ 11,250 sf
  - ◇ Built in 1946
- **Parking Lot** (PID: MI23.021.110.0110, MI23.021.110.0130, MI23.021.110.0140, MI23.021.110.0150, MI23.021.110.0160)
  - ◇ 0.37 sf parking area
  - ◇ Access from 3rd Street SW & Western Avenue

## Floorplan



**Duemelands Commercial Real Estate**  
301 E. Thayer Avenue - Bismarck, ND 58501  
Phone: (701) 221-2222  
[www.duemelands.com](http://www.duemelands.com)

**Jill Duemeland, CCIM**  
CEO & President  
Phone: 701.221.9033  
[jill@duemelands.com](mailto:jill@duemelands.com)

**April Eide, CCIM**  
Vice President of Brokerage  
Direct: 701.223.5863  
[april@duemelands.com](mailto:april@duemelands.com)

# Property Pictures

Midtown Plaza for Sale



**Duemelands Commercial Real Estate**  
301 E. Thayer Avenue - Bismarck, ND 58501  
Phone: (701) 221-2222  
[www.duemelands.com](http://www.duemelands.com)

**Jill Duemeland, CCIM**  
CEO & President  
Phone: 701.221.9033  
[jill@duemelands.com](mailto:jill@duemelands.com)

**April Eide, CCIM**  
Vice President of Brokerage  
Direct: 701.223.5863  
[april@duemelands.com](mailto:april@duemelands.com)

# Property Aerial

Midtown Plaza for Sale

Minot, North Dakota



**Duemelands Commercial Real Estate**  
301 E. Thayer Avenue - Bismarck, ND 58501  
Phone: (701) 221-2222  
[www.duemelands.com](http://www.duemelands.com)

**Jill Duemeland, CCIM**  
CEO & President  
Phone: 701.221.9033  
[jill@duemelands.com](mailto:jill@duemelands.com)

**April Eide, CCIM**  
Vice President of Brokerage  
Direct: 701.223.5863  
[april@duemelands.com](mailto:april@duemelands.com)

The data and information contained herein, while not guaranteed, have been obtained from sources we believe to be reliable. We make no warranties, whether expressed or implied, as to the accuracy or completeness of the information. Any reference to square footage and monetary values are considered approximations. Buyer or Lessee should conduct their own analysis and rely on their own investigative results.