

# Office Space for Lease



**DUEMELANDS**  
COMMERCIAL REAL ESTATE

Metro Center - Minot, North Dakota



## Call for Lease Rate and Terms

### Available Spaces

- ◆ Suite 5 1,270 sf
- ◆ Suite 9 2,268 sf
- ◆ Suite 1350 2,550 sf
- ◆ Suite 1400-3 3,570 sf

### Property Information

- ◆ Pylon & building signage
- ◆ Abundant parking

### Area Information

- ◆ 10,150 vpd along 20th Avenue SW
- ◆ Close to Dakota Square Mall, Target, & Southgate Crossing Shopping Center
- ◆ Easy access to Highway 2 and 16th Street SW

## Area Demographics

<i>Radius</i>	<b>1-Mile</b>	<b>3-Mile</b>	<b>5-Mile</b>
<b>Population:</b>	7,397	38,434	53,090
<b>Number of Households:</b>	3,449	16,485	23,034
<b>Average Household Income:</b>	\$120,668	\$100,685	\$101,041
<b>Households w/ \$50K+ Income:</b>	2,255	10,320	14,556
<b>Percent of Population w/ Assoc. Degree +:</b>	42.6%	44.8%	45.2%
<b>Number of Employees:</b>	7,398	28,490	36,469
<b>Number of Businesses:</b>	613	2,184	2,680



**Duemelands Commercial Real Estate**  
301 E. Thayer Avenue - Bismarck, ND 58501  
Phone: (701) 221-2222  
[www.duemelands.com](http://www.duemelands.com)

**Jill Duemeland, CCIM**  
CEO & President  
Phone: 701.221.9033  
[jill@duemelands.com](mailto:jill@duemelands.com)

**April Eide, CCIM**  
Vice President of Brokerage  
Direct: 701.223.5863  
[april@duemelands.com](mailto:april@duemelands.com)

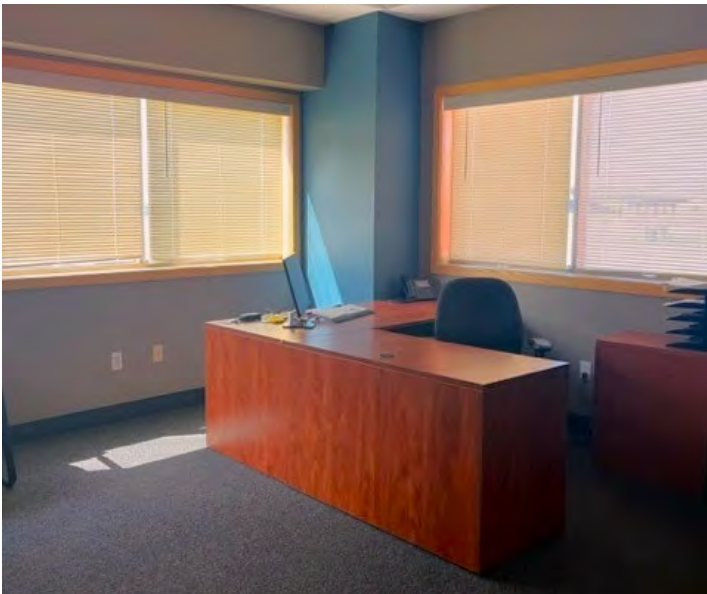
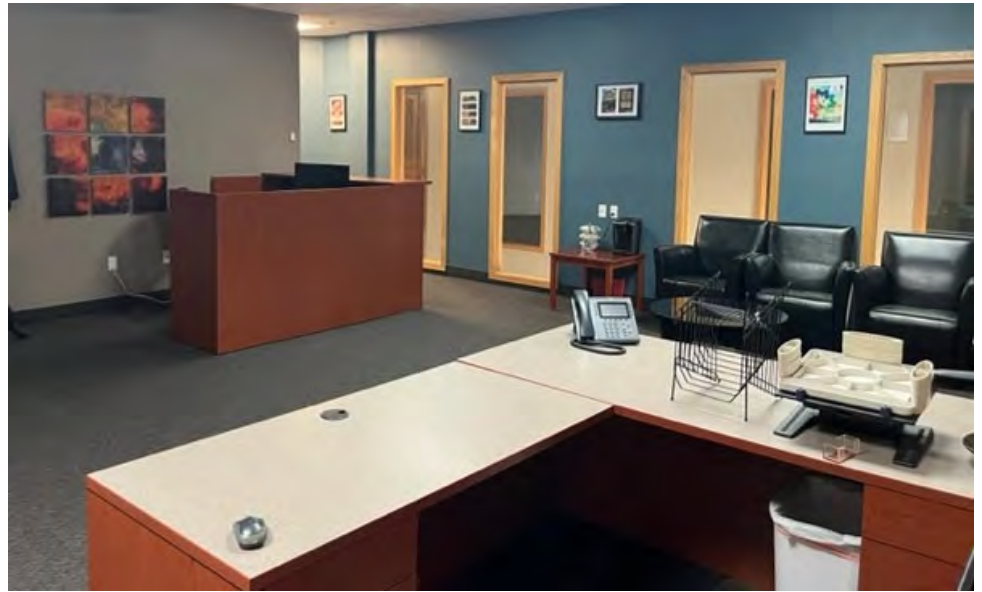
# Suite 5

Office Space for Lease

## Suite 5

**Available Space:** 1,270 sf

**Features:**  
Private offices  
Conference room  
Storage Room  
Turn key ready



**Duemelands Commercial Real Estate**  
301 E. Thayer Avenue - Bismarck, ND 58501  
Phone: (701) 221-2222  
[www.duemelands.com](http://www.duemelands.com)

**Jill Duemeland, CCIM**  
CEO & President  
Phone: 701.221.9033  
[jill@duemelands.com](mailto:jill@duemelands.com)

**April Eide, CCIM**  
Vice President of Brokerage  
Direct: 701.223.5863  
[april@duemelands.com](mailto:april@duemelands.com)

The data and information contained herein, while not guaranteed, have been obtained from sources we believe to be reliable. We make no warranties, whether expressed or implied, as to the accuracy or completeness of the information. Any reference to square footage and monetary values are considered approximations. Buyer or Lessee should conduct their own analysis and rely on their own investigative results.



# → Suite 9

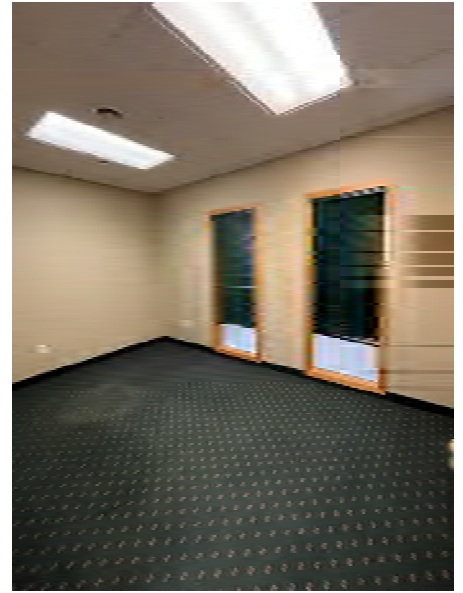
Office Space for Lease

## Suite 9

**Available Space:** 2,268 sf

**Features:**

- (4) Private offices w/ windows
- Conference room
- Second floor space
- Immediately available



**Duemelands Commercial Real Estate**  
301 E. Thayer Avenue - Bismarck, ND 58501  
Phone: (701) 221-2222  
[www.duemelands.com](http://www.duemelands.com)

**Jill Duemeland, CCIM**  
CEO & President  
Phone: 701.221.9033  
[jill@duemelands.com](mailto:jill@duemelands.com)

**April Eide, CCIM**  
Vice President of Brokerage  
Direct: 701.223.5863  
[april@duemelands.com](mailto:april@duemelands.com)

The data and information contained herein, while not guaranteed, have been obtained from sources we believe to be reliable. We make no warranties, whether expressed or implied, as to the accuracy or completeness of the information. Any reference to square footage and monetary values are considered approximations. Buyer or Lessee should conduct their own analysis and rely on their own investigative results.



# Property Aerial

Office Space for Lease



**Duemelands Commercial Real Estate**  
301 E. Thayer Avenue - Bismarck, ND 58501  
Phone: (701) 221-2222  
[www.duemelands.com](http://www.duemelands.com)

**Jill Duemeland, CCIM**  
CEO & President  
Phone: 701.221.9033  
[jill@duemelands.com](mailto:jill@duemelands.com)

**April Eide, CCIM**  
Vice President of Brokerage  
Direct: 701.223.5863  
[april@duemelands.com](mailto:april@duemelands.com)

The data and information contained herein, while not guaranteed, have been obtained from sources we believe to be reliable. We make no warranties, whether expressed or implied, as to the accuracy or completeness of the information. Any reference to square footage and monetary values are considered approximations. Buyer or Lessee should conduct their own analysis and rely on their own investigative results.