

Retail Space for Lease

Pinehurst Square East - Bismarck, North Dakota



Call for Terms and Lease Rates

Available Suites

- ◆ Suite 128 - 1,675 sf
- ◆ Suite 134 - 1,610 sf
- ◆ Suite 913 - 2,843 sf
- ◆ Suite 917 - *Leased*

Property Information

- ◆ \$3.92 psf CAM
- ◆ Located in the Pinehurst Square Shopping Center
- ◆ 16,605 vpd on W Century Avenue (ND DOT 2019)



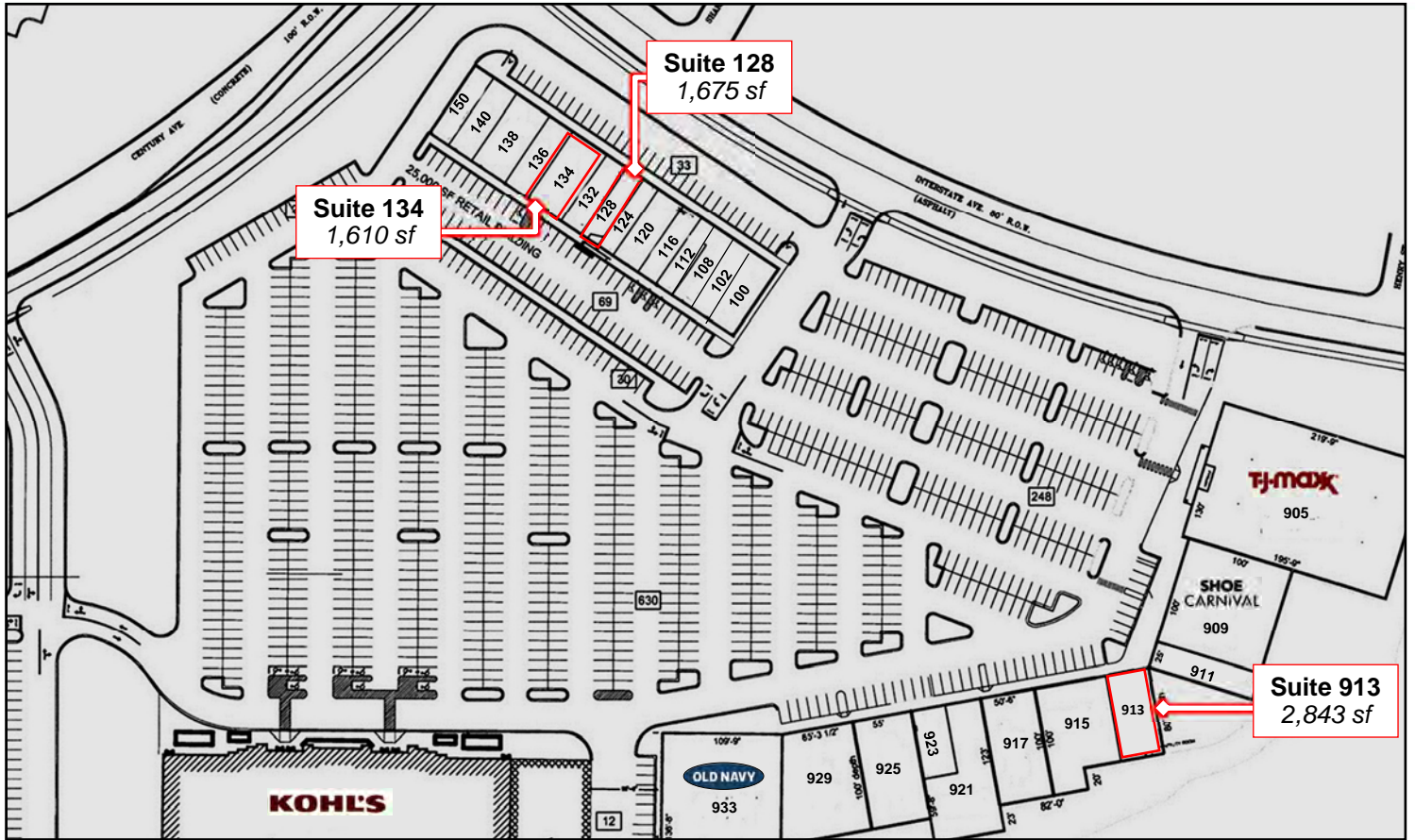
Duemelands Commercial Real Estate
301 E. Thayer Avenue - Bismarck, ND 58501
Phone: (701) 221-2222
www.duemelands.com

Jill Duemeland, CCIM
CEO & President
Phone: 701.221.9033
jill@duemelands.com

April Eide, CCIM
Vice President of Brokerage
Direct: 701.223.5863
april@duemelands.com

Suite Map & List

Retail Space for Lease



Suite	Tenant	SF
100	Evolve Salon & Spa	2,875
102	SolidCore	2,000
108	Blue Apple Walk-in Clinic	1,350
112	Nardello's	1,513
116	Boutique L	2,058
120	Brennon Rossman Insurance	1,288
124	Classy Nails	1,425
128	Available	1,675
132	Martinson Family Dental	3,000
134	Available	1,610
136	Edible Arrangements	1,275
138	Jimmy John's	1,333
140	Five Guy's Burgers & Fries	2,300

Suite	Tenant	SF
150	Sally Beauty	1,500
905	TJ Maxx	26,000
909	Shoe Carnival	10,000
911	Northern Lights Physical Therapy	2,450
913	Available	2,843
915	Kobe's Japanese Cuisine	6,245
917	CHI Urgent Care	5,050
921	CHI Urgent Care	4,651
923	Crystal Rock Healing Products	3,297
925	Grifols	5,500
929	Grifols	7,500
933	Old Navy	15,364



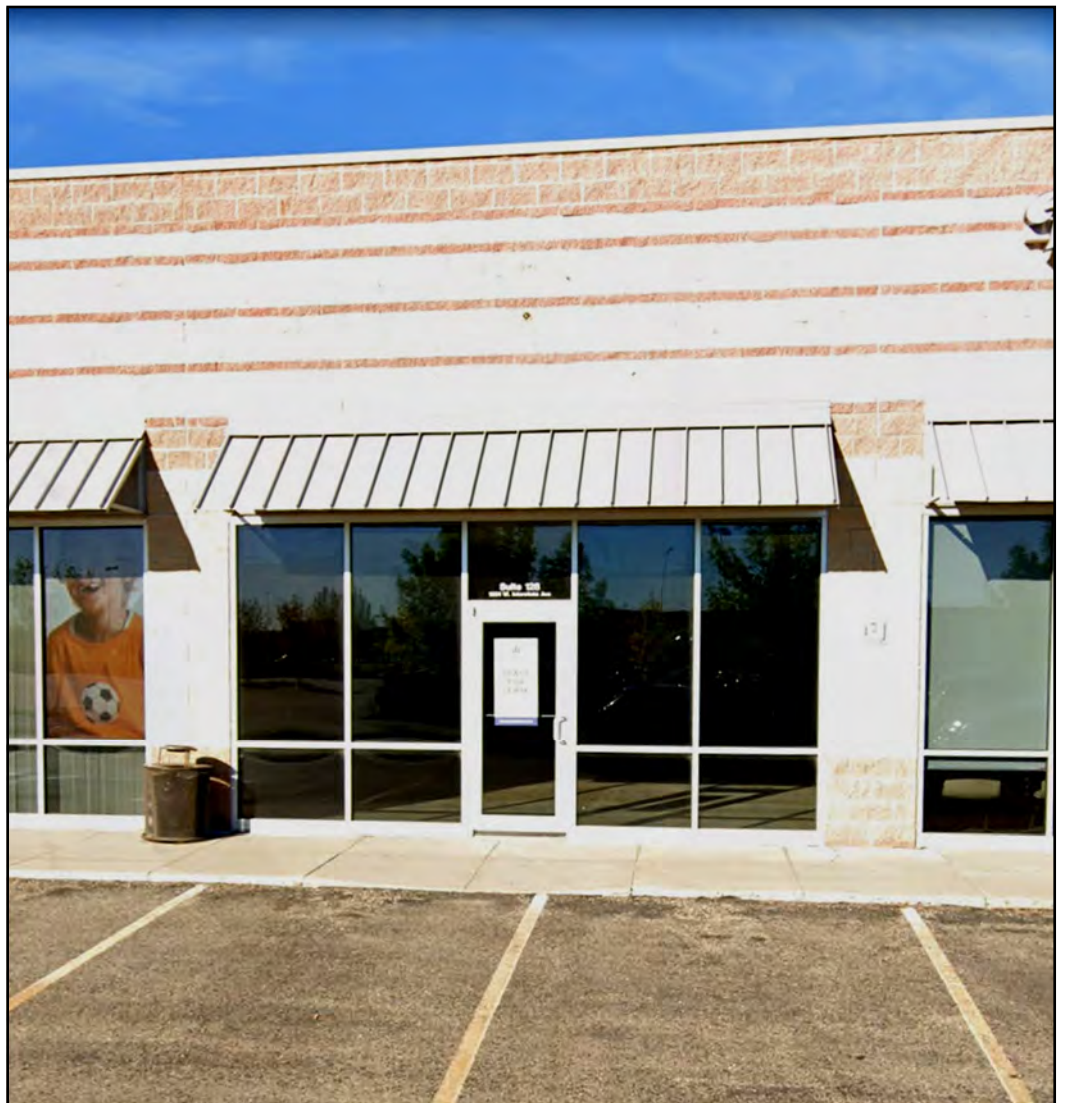
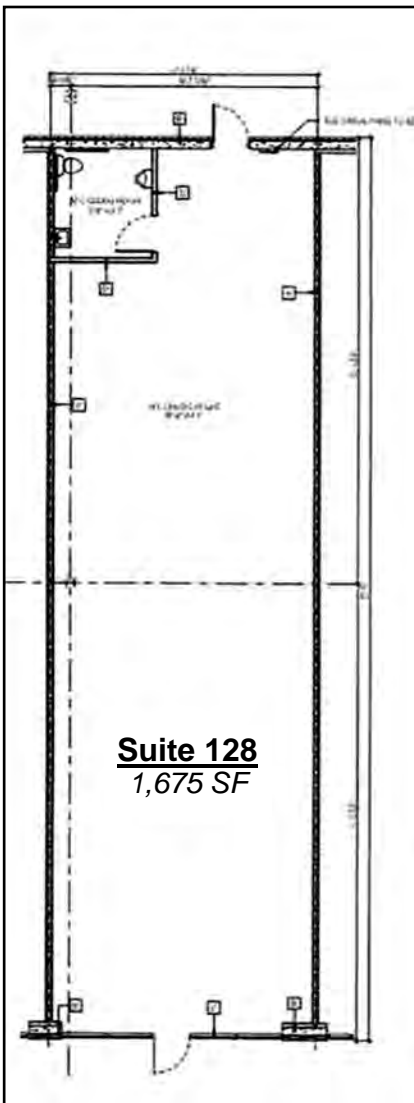
Duemelands Commercial Real Estate
 301 E. Thayer Avenue - Bismarck, ND 58501
 Phone: (701) 221-2222
www.duemelands.com

Jill Duemeland, CCIM
 CEO & President
 Phone: 701.221.9033
jill@duemelands.com

April Eide, CCIM
 Vice President of Brokerage
 Direct: 701.223.5863
april@duemelands.com

Suite 128

Retail Space for Lease



Duemelands Commercial Real Estate
301 E. Thayer Avenue - Bismarck, ND 58501
Phone: (701) 221-2222
www.duemelands.com

Jill Duemeland, CCIM
CEO & President
Phone: 701.221.9033
jill@duemelands.com

April Eide, CCIM
Vice President of Brokerage
Direct: 701.223.5863
april@duemelands.com

Suite 134

Retail Space for Lease




Duemelands Commercial Real Estate
301 E. Thayer Avenue - Bismarck, ND 58501
Phone: (701) 221-2222
www.duemelands.com

Jill Duemeland, CCIM
CEO & President
Phone: 701.221.9033
jill@duemelands.com

April Eide, CCIM
Vice President of Brokerage
Direct: 701.223.5863
april@duemelands.com

→ Suite 913

Retail Space for Lease



Suite 913
2,843 sf



Duemelands Commercial Real Estate
301 E. Thayer Avenue - Bismarck, ND 58501
Phone: (701) 221-2222
www.duemelands.com

Jill Duemeland, CCIM
CEO & President
Phone: 701.221.9033
jill@duemelands.com

April Eide, CCIM
Vice President of Brokerage
Direct: 701.223.5863
april@duemelands.com

The data and information contained herein, while not guaranteed, have been obtained from sources we believe to be reliable. We make no warranties, whether expressed or implied, as to the accuracy or completeness of the information. Any reference to square footage and monetary values are considered approximations. Buyer or Lessor should conduct their own analysis and rely on their own investigative results.