

Midtown Plaza Suites for Lease



212 / 216 S Broadway - Minot, North Dakota



Lease Rate Negotiable

- ◆ Gross lease rate + utilities

Available Spaces

- ◆ **Suite 102** - 4,009 sf (*can be demised*)
 - ◆ Space 1 - 1,175 sf
 - ◆ Space 2 - 1,050 sf
 - ◆ Space 3 - 1,550 sf
- ◆ **Suite 103** - 2,227 sf w/ 9 private offices
- ◆ **Suite 104** - *Leased*

Property Highlights

- ◆ 1st floor suites
- ◆ Located 1 block north of the Trinity Hospital
- ◆ Located on the signalized intersection of S Broadway and 2nd Avenue SW
- ◆ 22,660 vpd along S Broadway (2022)
- ◆ Large parking lot

Area Demographics

<i>Radius</i>	1-Mile	3-Mile	5-Mile
Population:	10,248	47,693	53,416
# of Households:	4,369	20,735	23,159
Ave. Household Income:	\$87,561	\$101,900	\$104,397
Households w/ \$50K+ Income:	2,783	14,203	15,999
% of Population w/ Assoc. Degree +:	38.1%	43.1%	43.4%
# of Employees:	12,608	33,378	36,491
# of Businesses:	786	2,400	2,687



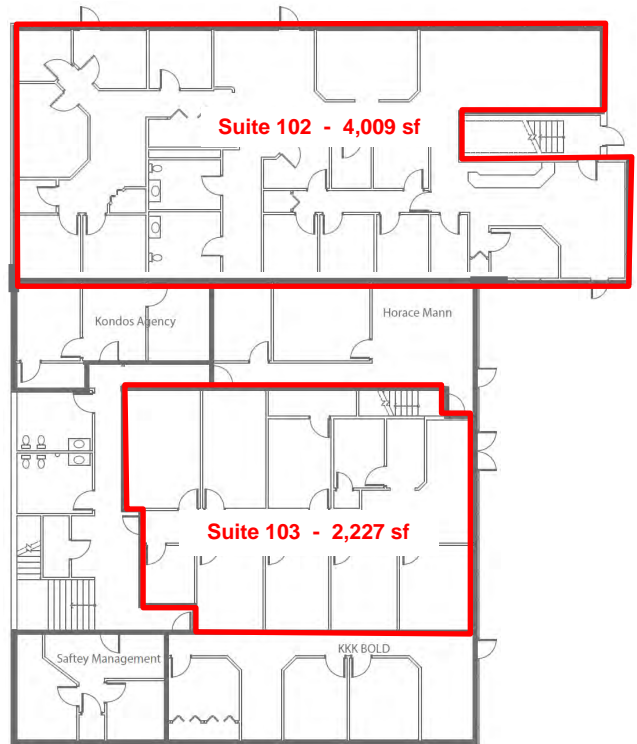
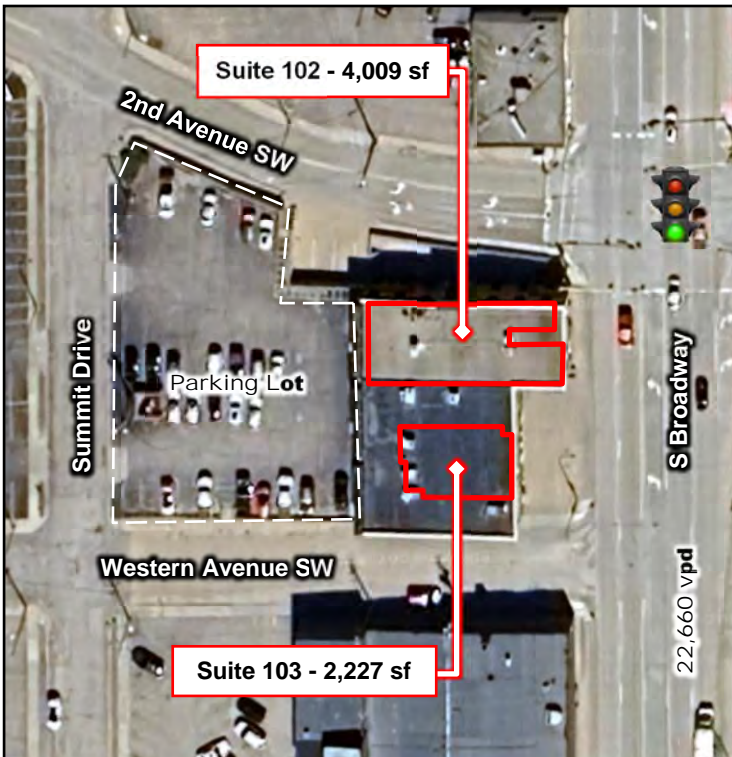
Duemelands Commercial Real Estate
301 E. Thayer Avenue - Bismarck, ND 58501
Phone: (701) 221-2222
www.duemelands.com

Jill Duemeland, CCIM
CEO & President
Phone: 701.221.9033
jill@duemelands.com

April Eide, CCIM
Vice President of Brokerage
Direct: 701.223.5863
april@duemelands.com

Overview

Midtown Plaza



Duemelands Commercial Real Estate
301 E. Thayer Avenue - Bismarck, ND 58501
Phone: (701) 221-2222
www.duemelands.com

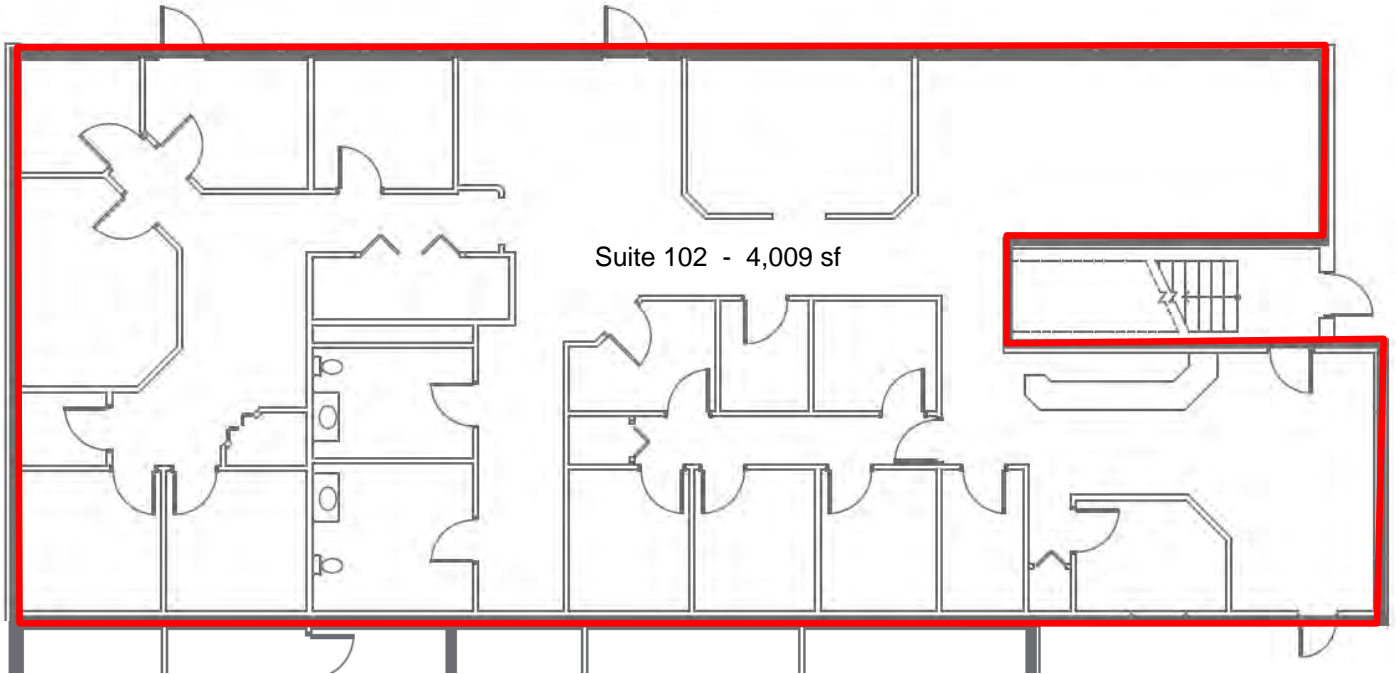
Jill Duemeland, CCIM
CEO & President
Phone: 701.221.9033
jill@duemelands.com

April Eide, CCIM
Vice President of Brokerage
Direct: 701.223.5863
april@duemelands.com

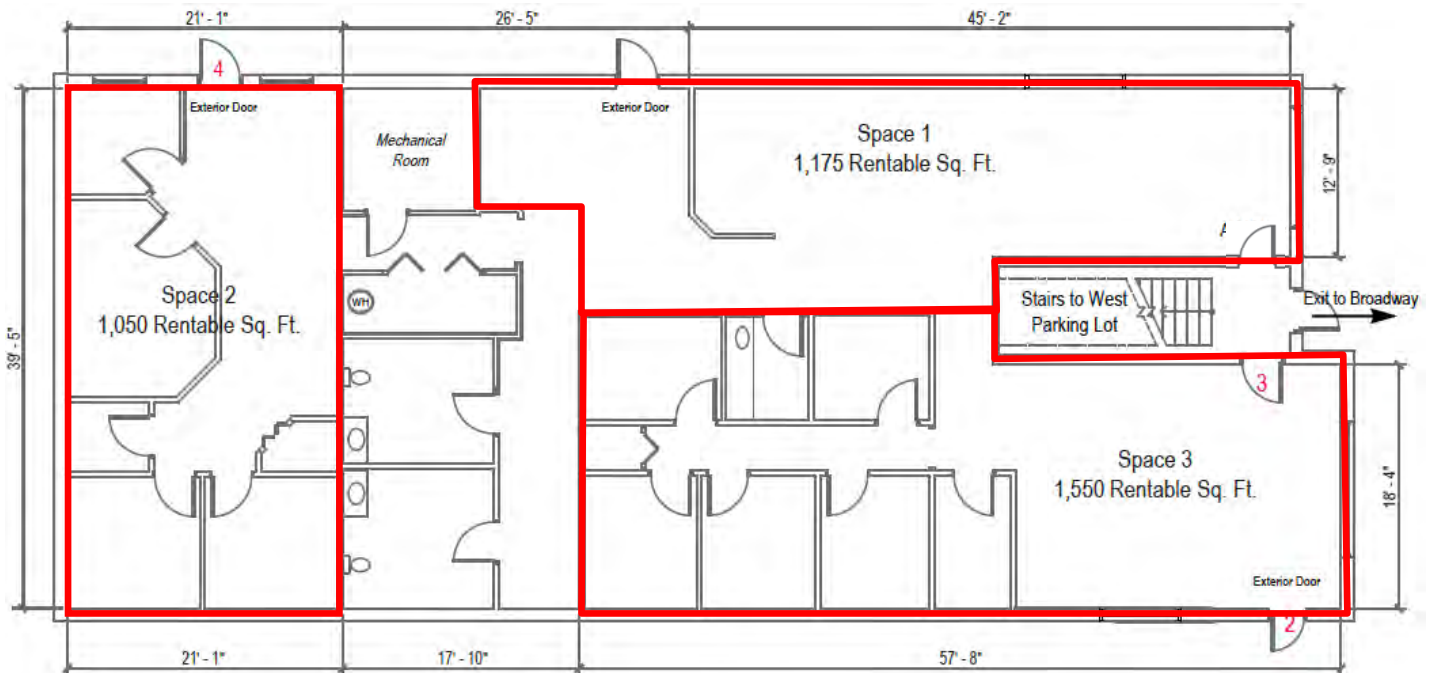
Suite 102 Floorplan

Midtown Plaza

Current Layout



Alternative Layout



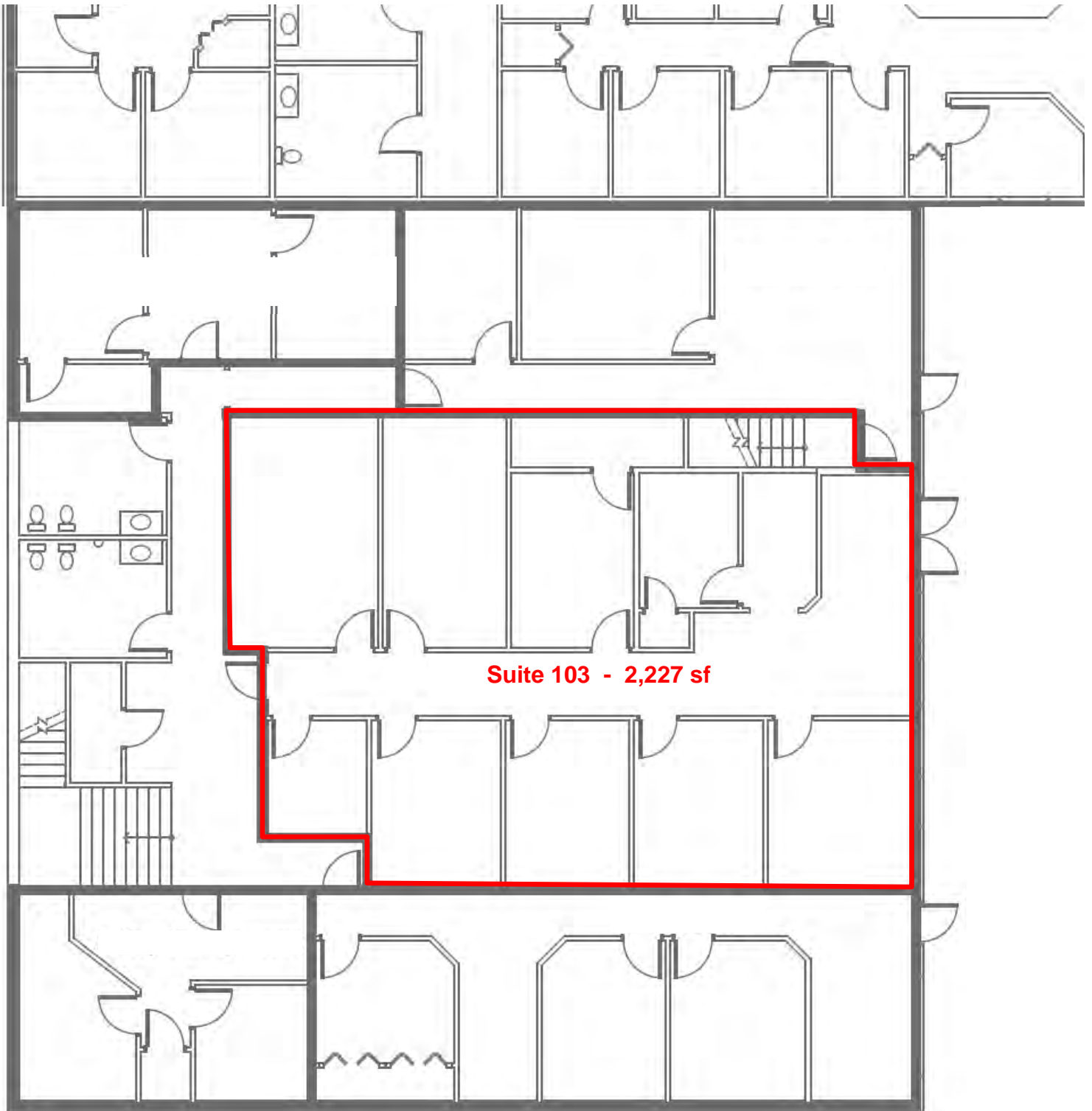
Duemelands Commercial Real Estate
301 E. Thayer Avenue - Bismarck, ND 58501
Phone: (701) 221-2222
www.duemelands.com

Jill Duemeland, CCIM
CEO & President
Phone: 701.221.9033
jill@duemelands.com

April Eide, CCIM
Vice President of Brokerage
Direct: 701.223.5863
april@duemelands.com

Suite 103 Floorplan

Midtown Plaza



Suite 103 - 2,227 sf



Duemelands Commercial Real Estate
301 E. Thayer Avenue - Bismarck, ND 58501
Phone: (701) 221-2222
www.duemelands.com

Jill Duemeland, CCIM
CEO & President
Phone: 701.221.9033
jill@duemelands.com

April Eide, CCIM
Vice President of Brokerage
Direct: 701.223.5863
april@duemelands.com

Property Aerial

Midtown Plaza



Duemelands Commercial Real Estate
 301 E. Thayer Avenue - Bismarck, ND 58501
 Phone: (701) 221-2222
www.duemelands.com

Jill Duemeland, CCIM
 CEO & President
 Phone: 701.221.9033
jill@duemelands.com

April Eide, CCIM
 Vice President of Brokerage
 Direct: 701.223.5863
april@duemelands.com

The data and information contained herein, while not guaranteed, have been obtained from sources we believe to be reliable. We make no warranties, whether expressed or implied, as to the accuracy or completeness of the information. Any reference to square footage and monetary values are considered approximations. Buyer or Lessee should conduct their own analysis and rely on their own investigative results.