

Office Space for Lease



DUEMELANDS
COMMERCIAL REAL ESTATE

Metro Center - Minot, North Dakota



Call for Lease Rate and Terms

Available Spaces

- ♦ Suite 6 2,200 sf
- ♦ Suite 9 2,268 sf
- ♦ Suite 1324 3,595 sf
- ♦ Suite 1401-2 1,835 sf

Property Information

- ♦ Pylon & building signage
- ♦ \$4.03 psf CAM
- ♦ Abundant parking

Area Information

- ♦ Close to Dakota Square Mall, Target, & Southgate Crossing Shopping Center
- ♦ Easy access to Highway 2 and 16th Street SW

Area Demographics

<i>Radius</i>	1-Mile	3-Mile	5-Mile
Population:	7,397	38,434	53,090
Number of Households:	3,449	16,485	23,034
Average Household Income:	\$120,668	\$100,685	\$101,041
Households w/ \$50K+ Income:	2,255	10,320	14,556
Percent of Population w/ Assoc. Degree +:	42.6%	44.8%	45.2%
Number of Employees:	7,398	28,490	36,469
Number of Businesses:	613	2,184	2,680



Duemelands Commercial Real Estate
301 E. Thayer Avenue - Bismarck, ND 58501
Phone: (701) 221-2222
www.duemelands.com

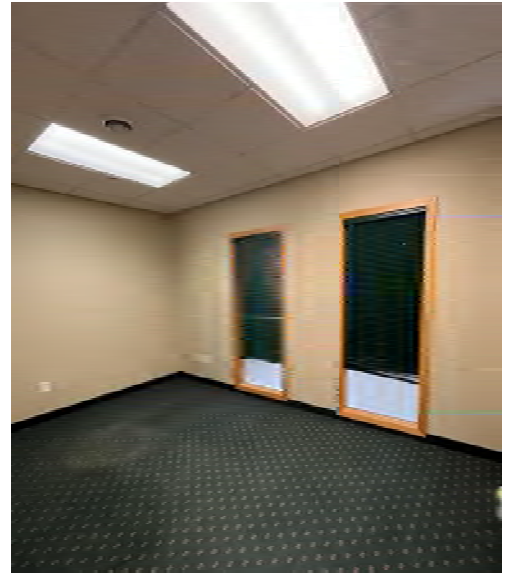
Jill Duemeland, CCIM
CEO & President
Phone: 701.221.9033
jill@duemelands.com

April Eide, CCIM
Vice President of Brokerage
Direct: 701.223.5863
april@duemelands.com

→ Pictures - Suite 9

Office Space for Lease

Suite 9 - 2,268 sf



Duemelands Commercial Real Estate
301 E. Thayer Avenue - Bismarck, ND 58501
Phone: (701) 221-2222
www.duemelands.com

Jill Duemeland, CCIM
CEO & President
Phone: 701.221.9033
jill@duemelands.com

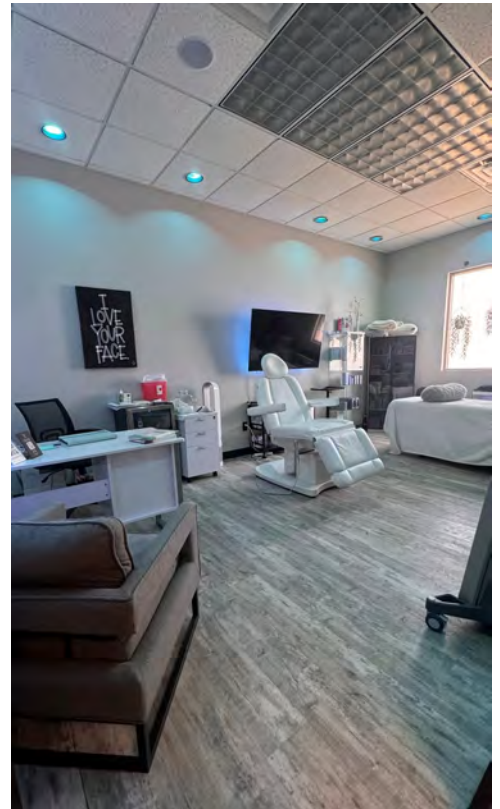
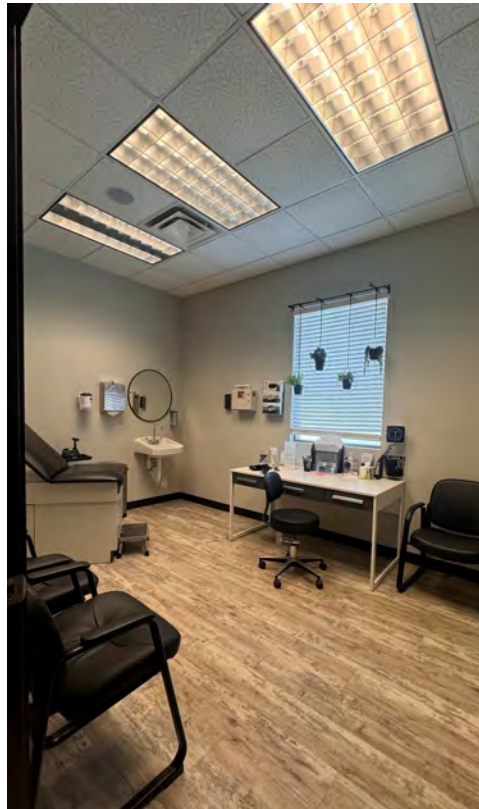
April Eide, CCIM
Vice President of Brokerage
Direct: 701.223.5863
april@duemelands.com

The data and information contained herein, while not guaranteed, have been obtained from sources we believe to be reliable. We make no warranties, whether expressed or implied, as to the accuracy or completeness of the information. Any reference to square footage and monetary values are considered approximations. Buyer or Lessee should conduct their own analysis and rely on their own investigative results.

→ Pictures - Suite 1324

Office Space for Lease

Suite 1324 - 3,595 sf



Duemelands Commercial Real Estate
301 E. Thayer Avenue - Bismarck, ND 58501
Phone: (701) 221-2222
www.duemelands.com

Jill Duemeland, CCIM
CEO & President
Phone: 701.221.9033
jill@duemelands.com

April Eide, CCIM
Vice President of Brokerage
Direct: 701.223.5863
april@duemelands.com

The data and information contained herein, while not guaranteed, have been obtained from sources we believe to be reliable. We make no warranties, whether expressed or implied, as to the accuracy or completeness of the information. Any reference to square footage and monetary values are considered approximations. Buyer or Lessee should conduct their own analysis and rely on their own investigative results.

→ Pictures - Suite 1401-2

Office Space for Lease

Suite 1401-2 - 1,835 sf



Duemelands Commercial Real Estate
301 E. Thayer Avenue - Bismarck, ND 58501
Phone: (701) 221-2222
www.duemelands.com

Jill Duemeland, CCIM
CEO & President
Phone: 701.221.9033
jill@duemelands.com

April Eide, CCIM
Vice President of Brokerage
Direct: 701.223.5863
april@duemelands.com

The data and information contained herein, while not guaranteed, have been obtained from sources we believe to be reliable. We make no warranties, whether expressed or implied, as to the accuracy or completeness of the information. Any reference to square footage and monetary values are considered approximations. Buyer or Lessee should conduct their own analysis and rely on their own investigative results.

Office Space for Lease



Duemlands Commercial Real Estate
301 E. Thayer Avenue - Bismarck, ND 58501
Phone: (701) 221-2222
www.duemlands.com

Jill Duemeland, CCIM
CEO & President
 Phone: 701.221.9033
jill@duemelands.com

April Eide, CCIM
Vice President of Brokerage
 Direct: 701.223.5863
april@duemelands.com

The data and information contained herein, while not guaranteed, have been obtained from sources we believe to be reliable. We make no warranties, whether expressed or implied, as to the accuracy or completeness of the information. Any reference to square footage and monetary values are considered approximations. Buyer or Lessee should conduct their own analysis and rely on their own investigative results.