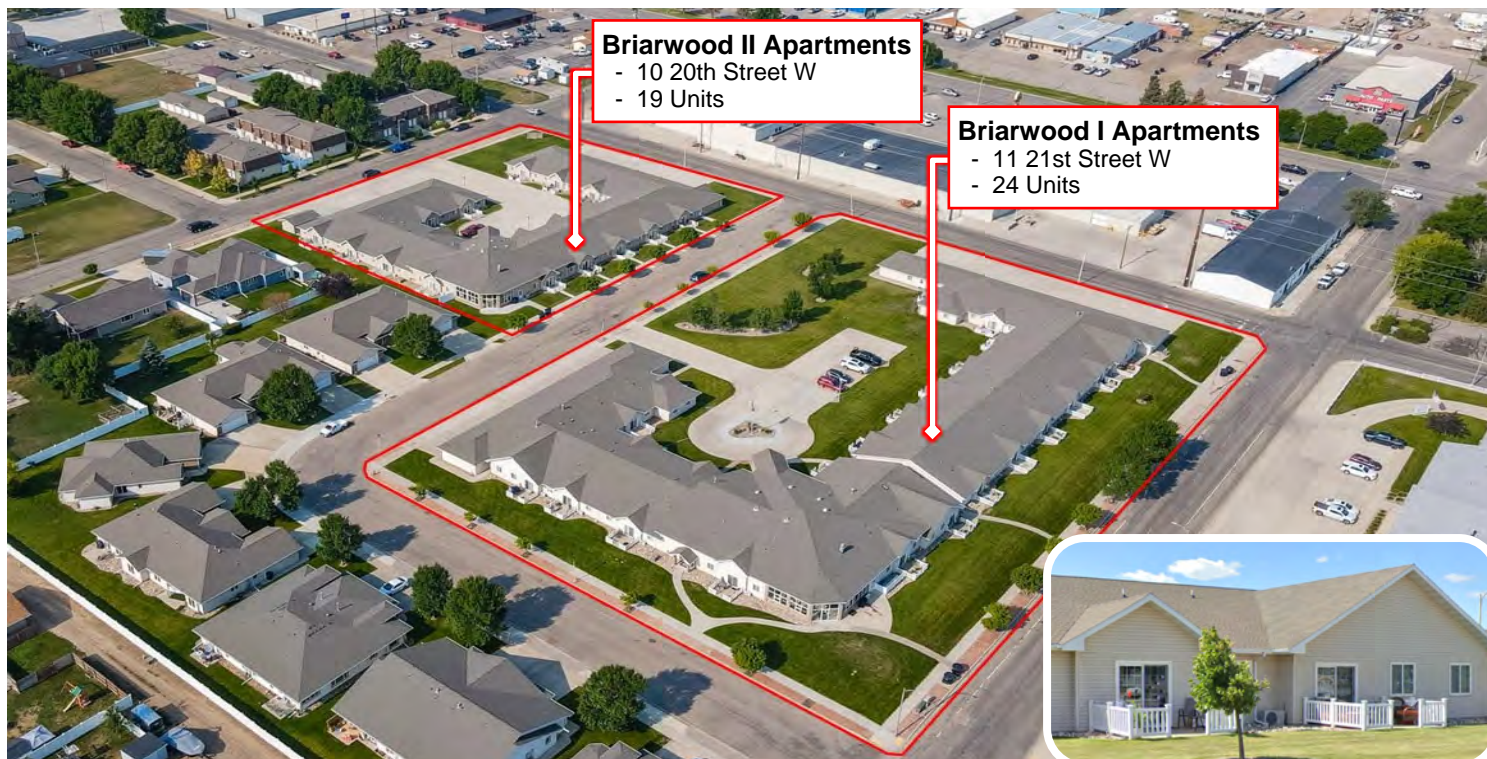


BRIARWOOD 55+ Community



10 20th Street W & 11 21st Street W - Williston, North Dakota



Briarwood II Apartments

- 10 20th Street W
- 19 Units

Briarwood I Apartments

- 11 21st Street W
- 24 Units

Properties

- ◆ **Briarwood I** - 11 21st Street W
- ◆ **Briarwood II** - 10 20th Street W

Property Information

- ◆ Units / Buildings: 43 Units / 2 Buildings
- ◆ Apartment Type: Garden / single story
- ◆ Year Built: 2001 & 2009

Highlights

- ◆ \$452,000 NOI (Effective July 1, 2025)
- ◆ All ground-floor units - no stairs
- ◆ Walk-out patios
- ◆ Attached garages for all units
- ◆ Current occupancy at 100%

Williston Highlights

- ◆ 54% of Williston residents rent their homes.
- ◆ The population of Williston has increased at an average annual rate of 5.82% over the last 14 years.
- ◆ Williston is the economic, educational, and healthcare regional hub of northwest North Dakota.

Williston Micropolitan Area Demographics

Population:	41,151
Number of Households:	16,210
Average Household Income:	\$117,024
Households with \$50K+ Income:	12,214
% of Pop. with Associates Degree +:	40.9%
Number of Businesses	2,092
Number of Employees:	21,671



Duemelands Commercial Real Estate
301 E. Thayer Avenue - Bismarck, ND 58501
Phone: (701) 221-2222
www.duemelands.com

Jill Duemeland, CCIM
CEO & President
Phone: 701.221.9033
jill@duemelands.com

April Eide, CCIM
Vice President of Brokerage
Direct: 701.223.5863
april@duemelands.com

The data and information contained herein, while not guaranteed, have been obtained from sources we believe to be reliable. We make no warranties, whether expressed or implied, as to the accuracy or completeness of the information. Any reference to square footage and monetary values are considered approximations. Buyer or Lessee should conduct their own analysis and rely on their own investigative results.

BRIARWOOD 55+ Community



10 20th Street W & 11 21st Street W - Williston, North Dakota

Investment Highlights

- ♦ **Steady Income Stream** – *Consistent strong, stable revenue*
- ♦ **High Occupancy Rates** – *Historically near 100% occupancy with low turnover and long term tenancy.*
- ♦ **Current Demand** – *Nationally, 54.9% of seniors rent, according to ESRI Tapestry.*
- ♦ **Future Demand** - *According to the US Census Bureau, based on current life-expectancy, the population 65+ will increase by nearly 50% over the next 25 years.*
- ♦ **Well-Maintained Property** – *Units are well kept, nurtured, and in excellent condition.*
- ♦ **Established management** - *Current management team is available to continue operations.*
- ♦ **Business-Friendly Environment** – *North Dakota has been ranked the "Best State to Start a Business" for two consecutive years by Forbes: "The state not only offers financial incentives but also provides a solid foundation for workforce development, ensuring businesses have access to a skilled and able workforce."*



Duemelands Commercial Real Estate
301 E. Thayer Avenue - Bismarck, ND 58501
Phone: (701) 221-2222
www.duemelands.com

Jill Duemeland, CCIM
CEO & President
Phone: 701.221.9033
jill@duemelands.com

April Eide, CCIM
Vice President of Brokerage
Direct: 701.223.5863
april@duemelands.com

The data and information contained herein, while not guaranteed, have been obtained from sources we believe to be reliable. We make no warranties, whether expressed or implied, as to the accuracy or completeness of the information. Any reference to square footage and monetary values are considered approximations. Buyer or Lessee should conduct their own analysis and rely on their own investigative results.

BRIARWOOD 55+ Community



10 20th Street W & 11 21st Street W - Williston, North Dakota

Key Industries in Williston, ND

◆ Energy

- ◇ Williston sits in the heart of the **Bakken Formation**, one of the largest and most important oil producing regions in the world.
- ◇ **Cerilon GTL North Dakota** will be the first large-scale, natural-gas fed Gas-To-Liquids (GTL) facility to be built in North America.

◆ Healthcare

- ◇ **CHI St Alexis** is adding a new operating suite and expanding their emergency department.
- ◇ **Trinity Health**, a member of the **Mayo Clinic Care Network**, offers a full continuum of services at its state-of-the-art Healthcare Campus and Medical District.
- ◇ **Sanford Health** opened a new multi-specialty clinic in 2024.
- ◇ **McKenzie Health** opened a healthcare center in 2024, with additional investment expected.

◆ Agriculture

- ◇ The **MonDak region** (eastern Montana and western North Dakota) has a 30 million-acre land base. This region is the number one producing area in the US for durum wheat, peas and lentils for export and domestic markets.

◆ Education

- ◇ **Williston State College** has announced a **\$36 million Healthcare Training Facility**.
- ◇ The **University of Mary**, **Minot State University**, and **Dickinson State University** have partnered with WSC to offer university-level degree programs through a combination of online-learning and in-person instruction.

◆ Transportation

- ◇ **Williston Basin International Airport (XWA)** can accommodating large commercial and cargo aircraft, as well as private and corporate planes. It offers nonstop flights to major hubs such as Denver and Minneapolis.
- ◇ The **BNSF Railway** operates in the Williston area, transporting up to **1 million barrels of oil per day**, as well as agricultural products and other freight across the Western, Midwestern, and Southern United States.

Cerilon GTL ND - Facility Design



CHI St. Alexis Health - Williston



Trinity Health - Western Dakota



Williston State College



Williston Basin International Airport



Duemelands Commercial Real Estate
301 E. Thayer Avenue - Bismarck, ND 58501
Phone: (701) 221-2222
www.duemelands.com

Jill Duemeland, CCIM
CEO & President
Phone: 701.221.9033
jill@duemelands.com

April Eide, CCIM
Vice President of Brokerage
Direct: 701.223.5863
april@duemelands.com

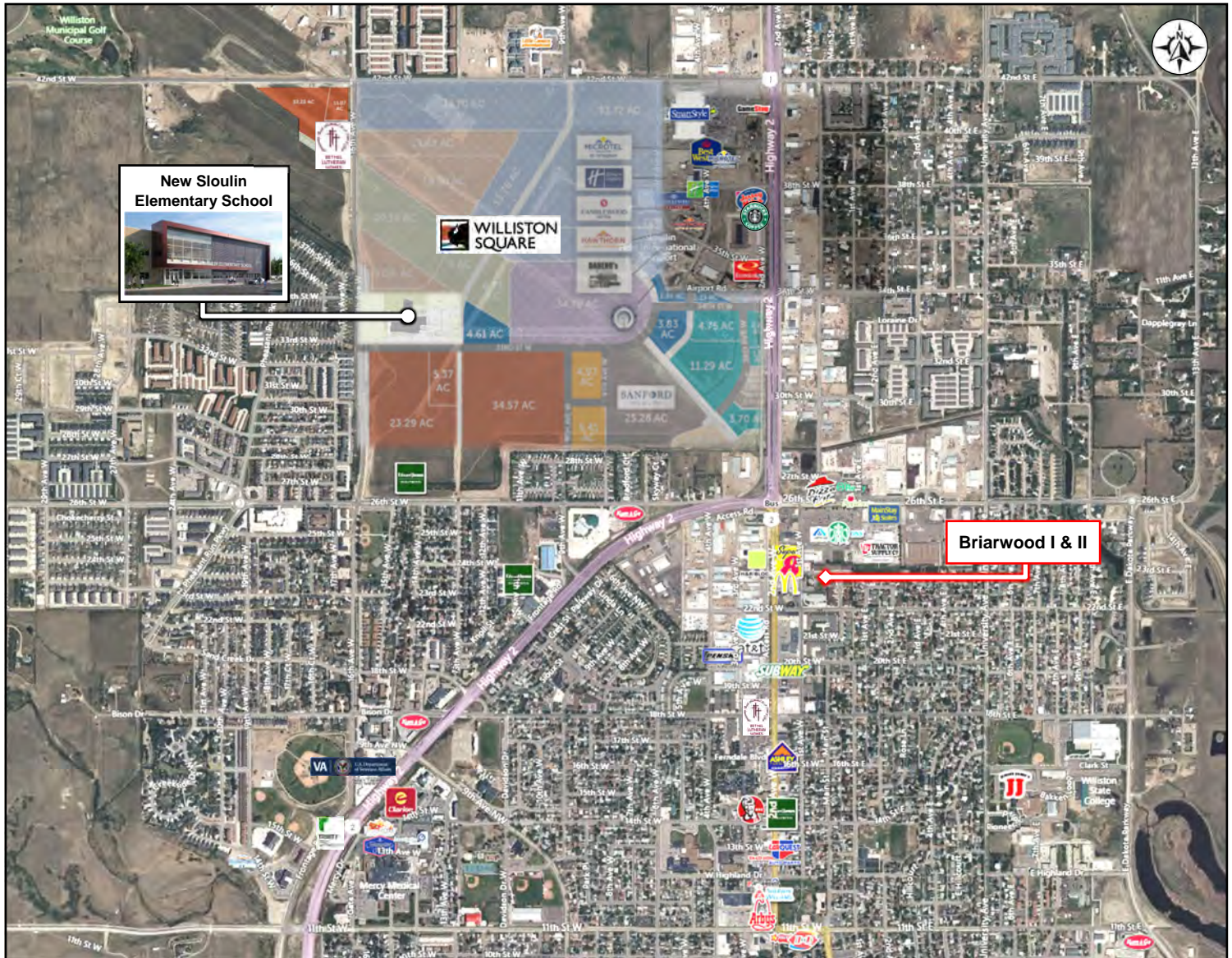
The data and information contained herein, while not guaranteed, have been obtained from sources we believe to be reliable. We make no warranties, whether expressed or implied, as to the accuracy or completeness of the information. Any reference to square footage and monetary values are considered approximations. Buyer or Lessee should conduct their own analysis and rely on their own investigative results.

BRIARWOOD 55+ Community



DUEMELANDS
COMMERCIAL REAL ESTATE

10 20th Street W & 11 21st Street W - Williston, North Dakota



Williston Major Employers



Williston Healthcare Providers



Duemelands Commercial Real Estate
301 E. Thayer Avenue - Bismarck, ND 58501
Phone: (701) 221-2222
www.duemelands.com

Jill Duemeland, CCIM
CEO & President
Phone: 701.221.9033
jill@duemelands.com

April Eide, CCIM
Vice President of Brokerage
Direct: 701.223.5863
april@duemelands.com

The data and information contained herein, while not guaranteed, have been obtained from sources we believe to be reliable. We make no warranties, whether expressed or implied, as to the accuracy or completeness of the information. Any reference to square footage and monetary values are considered approximations. Buyer or Lessee should conduct their own analysis and rely on their own investigative results.