

Fillmore 16th & 30th Lot For Sale



DUEMELANDS
COMMERCIAL REAL ESTATE

NEQ of 16th St NW & 30th Ave NW - Minot, North Dakota



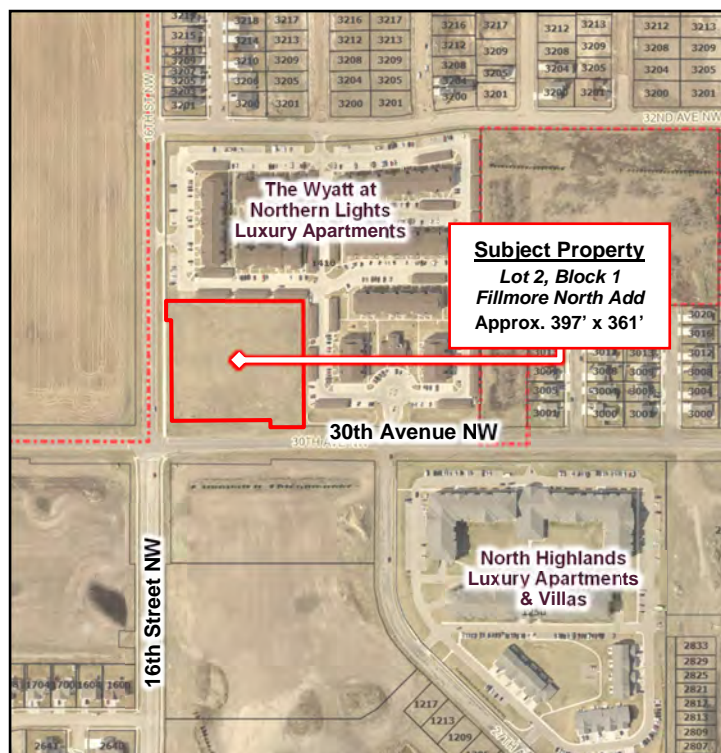
Sale Price: \$925,000 (\$6.45 psf)

Property Information

- ◆ 3.293 acres (143,444 sf)
- ◆ Build-ready lot
- ◆ Zoned C2 - General Commercial
- ◆ Located at the corner of 16th Street NW and 30th Avenue NW

Area Information

- ◆ Direct access to major Minot business districts via 16th Street as well as N Broadway & US-83 Bypass via 30th Avenue NW
- ◆ Just south of Erik Ramstad Middle School and north of the new Minot North High School
- ◆ Located in an area of new growth in north Minot



Duemelands Commercial Real Estate
301 E. Thayer Avenue - Bismarck, ND 58501
Phone: (701) 221-2222
www.duemelands.com

Jill Duemeland, CCIM
CEO & President
Phone: 701.221.9033
jill@duemelands.com

April Eide, CCIM
Vice President of Brokerage
Direct: 701.223.5863
april@duemelands.com

Property Information

Fillmore 16th & 30th Lot

Area Demographics

Radius	1-Mile	3-Mile	5-Mile
Population:	4,869	27,122	47,026
Number of Households:	2,243	11,402	20,322
Average Household Income:	\$107,721	\$100,732	\$99,435
Percent Households w/ \$50K+ Income:	74.1%	75.0%	72.8%
Percent of Population w/ Assoc. Degree +:	47.5%	45.3%	44.6%
Number of Employees:	2,217	16,422	34,171
Number of Businesses:	110	1,157	2,469

Property Aerial



Duemelands Commercial Real Estate
 301 E. Thayer Avenue - Bismarck, ND 58501
 Phone: (701) 221-2222
www.duemelands.com

Jill Duemeland, CCIM
 CEO & President
 Phone: 701.221.9033
jill@duemelands.com

April Eide, CCIM
 Vice President of Brokerage
 Direct: 701.223.5863
april@duemelands.com

The data and information contained herein, while not guaranteed, have been obtained from sources we believe to be reliable. We make no warranties, whether expressed or implied, as to the accuracy or completeness of the information. Any reference to square footage and monetary values are considered approximations. Buyer or Lessee should conduct their own analysis and rely on their own investigative results.