

Retail Space for Lease

Pinehurst Square East | Bismarck, North Dakota



DUEMELANDS
COMMERCIAL REAL ESTATE



Call for Terms and Lease Rates

Available Suites

- ♦ Suite 116 - 2,058 sf
- ♦ Suite 128 - 1,675 sf
- ♦ Suite 134 - 1,610 sf
- ♦ Suite 136 - 1,275 sf
- ♦ Suite 913 - 2,843 sf

Property Information

- ♦ Located in the Pinehurst Square Shopping Center
- ♦ \$4.70 psf CAM
- ♦ 17,236 vpd on W Century Avenue

National Co-tenancy



Area Demographics

Radius	1-Mile	3-Mile	5-Mile
Population:	10,757	60,608	103,333
Number of Households:	4,482	26,392	43,579
Average Household Income:	\$113,603	\$105,891	\$104,511
% of Population w/ Assoc. Degree +:	60.2%	57.0%	54.4%
Number of Employees:	5,284	55,949	77,718
Number of Businesses:	462	3,676	5,473



Duemelands Commercial Real Estate
301 E. Thayer Avenue - Bismarck, ND 58501
Phone: (701) 221-2222
www.duemelands.com

Jill Duemeland, CCIM
CEO & President
Phone: 701.221.9033
jill@duemelands.com

April Eide, CCIM
Vice President of Brokerage
Direct: 701.223.5863
april@duemelands.com

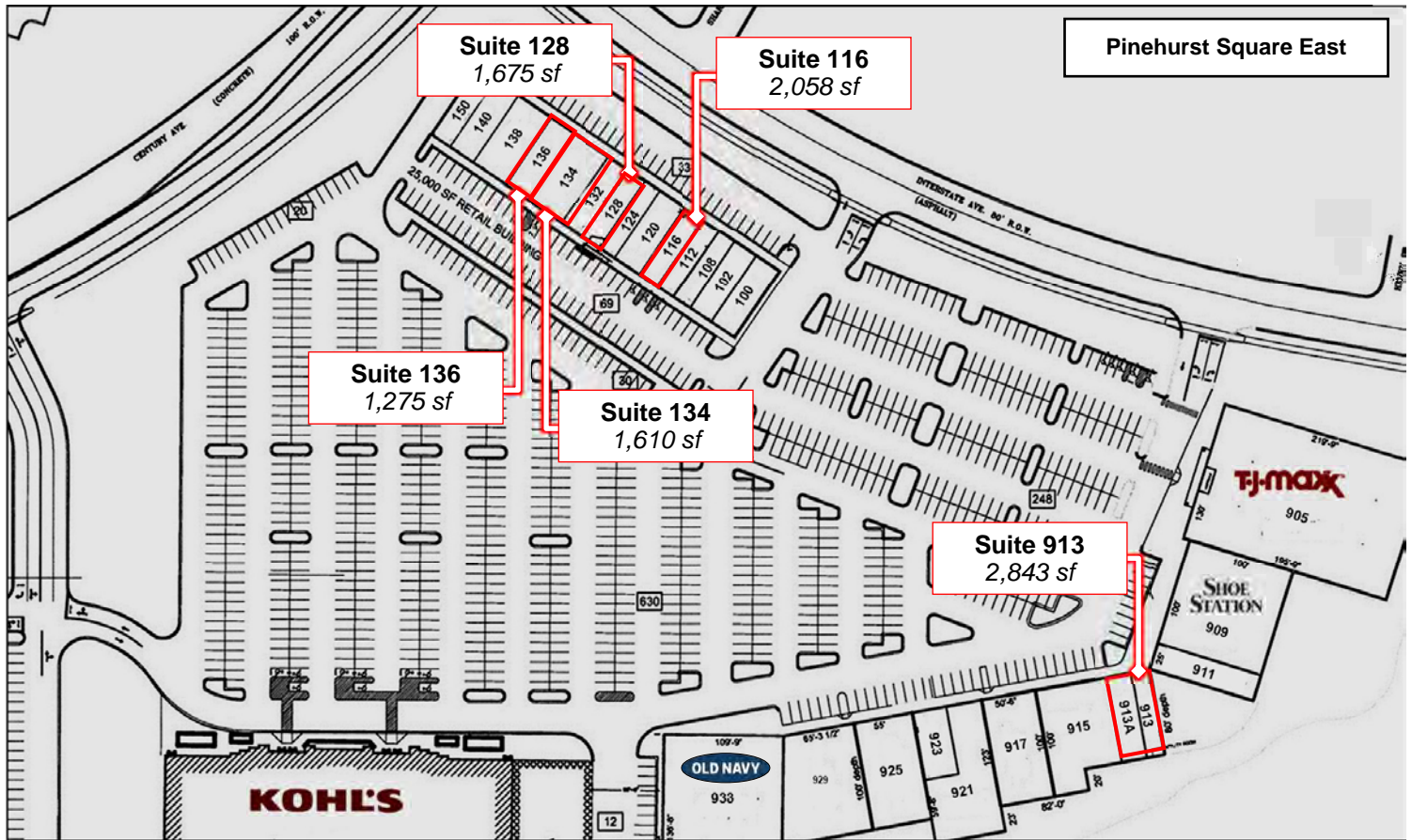
The information contained herein, while not guaranteed, have been obtained from sources we believe to be reliable. We make no warranties, whether expressed or implied, as to the accuracy or completeness of the information. Any reference to square footage and monetary values are considered approximations. Buyer or Lessee should conduct their own analysis and rely on their own investigative results.

Retail Space for Lease

Pinehurst Square East | Bismarck, North Dakota



DUEMELANDS
COMMERCIAL REAL ESTATE



Suite	Tenant	SF
100	Evolve Salon & Spa	2,875
102	SolidCore	2,000
108	Blue Apple Walk-in Clinic	1,350
112	Nardello's	1,513
116	Available	2,058
120	Brennon Rossman Insurance	1,288
124	Classy Nails	1,425
128	Available	1,675
132	Martinson Family Dental	3,000
134	Available	1,610
136	Available	1,275
138	Jimmy John's	1,333
140	Five Guy's Burgers & Fries	2,300

Suite	Tenant	SF
150	Sally Beauty	1,500
905	TJ Maxx	26,000
909	Shoe Carnival	10,000
911	Northern Lights Physical Therapy	2,450
913	Available	2,843
915	Kobe's Japanese Cuisine	6,245
917	CHI Urgent Care	5,050
921	CHI Urgent Care	4,651
923	Crystal Rock Healing Products	3,297
925	Grifols	5,500
929	Grifols	7,500
933	Old Navy	15,364



Duemelands Commercial Real Estate
301 E. Thayer Avenue - Bismarck, ND 58501
Phone: (701) 221-2222
www.duemelands.com

Jill Duemeland, CCIM
CEO & President
Phone: 701.221.9033
jill@duemelands.com

April Eide, CCIM
Vice President of Brokerage
Direct: 701.223.5863
april@duemelands.com

The information contained herein, while not guaranteed, have been obtained from sources we believe to be reliable. We make no warranties, whether expressed or implied, as to the accuracy or completeness of the information. Any reference to square footage and monetary values are considered approximations. Buyer or Lessee should conduct their own analysis and rely on their own investigative results.

Retail Space for Lease

Pinehurst Square East | Bismarck, North Dakota



DUEMELANDS
COMMERCIAL REAL ESTATE

Pinehurst Square East, Ste. 116 - 2,058 sf
1001 W Interstate Avenue - Bismarck, North Dakota



Duemelands Commercial Real Estate
301 E. Thayer Avenue - Bismarck, ND 58501
Phone: (701) 221-2222
www.duemelands.com

Jill Duemeland, CCIM
CEO & President
Phone: 701.221.9033
jill@duemelands.com

April Eide, CCIM
Vice President of Brokerage
Direct: 701.223.5863
april@duemelands.com

The information contained herein, while not guaranteed, have been obtained from sources we believe to be reliable. We make no warranties, whether expressed or implied, as to the accuracy or completeness of the information. Any reference to square footage and monetary values are considered approximations. Buyer or Lessee should conduct their own analysis and rely on their own investigative results.

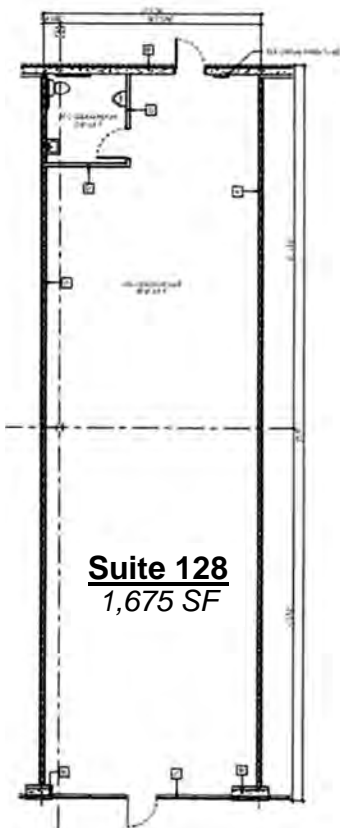
Retail Space for Lease

Pinehurst Square East | Bismarck, North Dakota



DUEMELANDS
COMMERCIAL REAL ESTATE

Pinehurst Square East, Ste. 128 - 1,675 sf
1001 W Interstate Avenue - Bismarck, North Dakota



Duemelands Commercial Real Estate
301 E. Thayer Avenue - Bismarck, ND 58501
Phone: (701) 221-2222
www.duemelands.com

Jill Duemeland, CCIM
CEO & President
Phone: 701.221.9033
jill@duemelands.com

April Eide, CCIM
Vice President of Brokerage
Direct: 701.223.5863
april@duemelands.com

The information contained herein, while not guaranteed, have been obtained from sources we believe to be reliable. We make no warranties, whether expressed or implied, as to the accuracy or completeness of the information. Any reference to square footage and monetary values are considered approximations. Buyer or Lessee should conduct their own analysis and rely on their own investigative results.

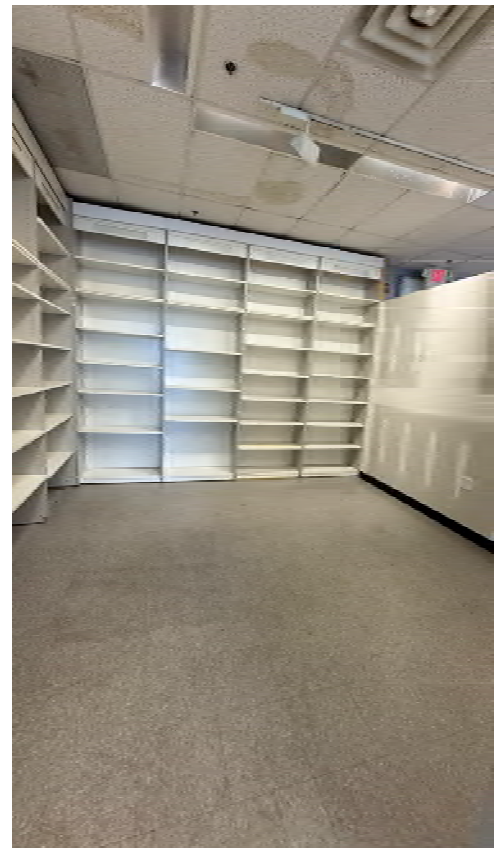
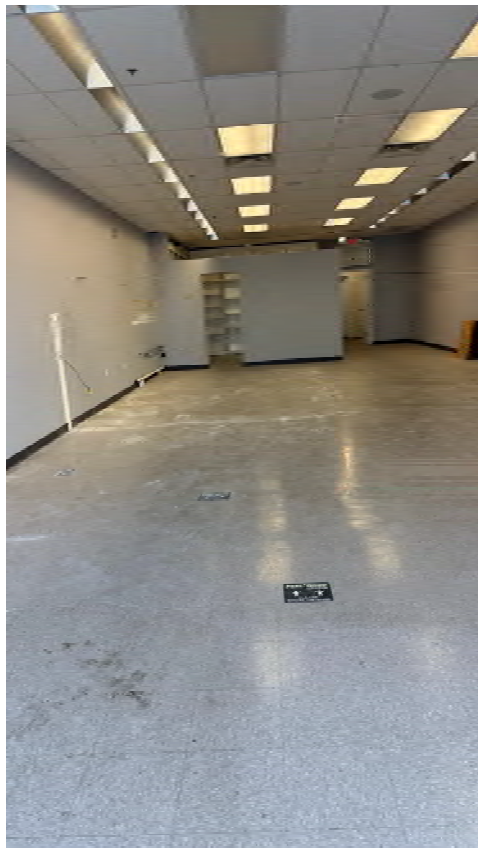
Retail Space for Lease

Pinehurst Square East | Bismarck, North Dakota



DUEMELANDS
COMMERCIAL REAL ESTATE

Pinehurst Square East, Ste. 134 - 1,610 sf
1001 W Interstate Avenue - Bismarck, North Dakota



Duemelands Commercial Real Estate
301 E. Thayer Avenue - Bismarck, ND 58501
Phone: (701) 221-2222
www.duemelands.com

Jill Duemeland, CCIM
CEO & President
Phone: 701.221.9033
jill@duemelands.com

April Eide, CCIM
Vice President of Brokerage
Direct: 701.223.5863
april@duemelands.com

The information contained herein, while not guaranteed, have been obtained from sources we believe to be reliable. We make no warranties, whether expressed or implied, as to the accuracy or completeness of the information. Any reference to square footage and monetary values are considered approximations. Buyer or Lessee should conduct their own analysis and rely on their own investigative results.

Retail Space for Lease

Pinehurst Square East | Bismarck, North Dakota



DUEMELANDS
COMMERCIAL REAL ESTATE

Pinehurst Square East, Ste. 136 - 1,275 sf
1001 W Interstate Avenue - Bismarck, North Dakota



Duemelands Commercial Real Estate
301 E. Thayer Avenue - Bismarck, ND 58501
Phone: (701) 221-2222
www.duemelands.com

Jill Duemeland, CCIM
CEO & President
Phone: 701.221.9033
jill@duemelands.com

April Eide, CCIM
Vice President of Brokerage
Direct: 701.223.5863
april@duemelands.com

The information contained herein, while not guaranteed, have been obtained from sources we believe to be reliable. We make no warranties, whether expressed or implied, as to the accuracy or completeness of the information. Any reference to square footage and monetary values are considered approximations. Buyer or Lessee should conduct their own analysis and rely on their own investigative results.

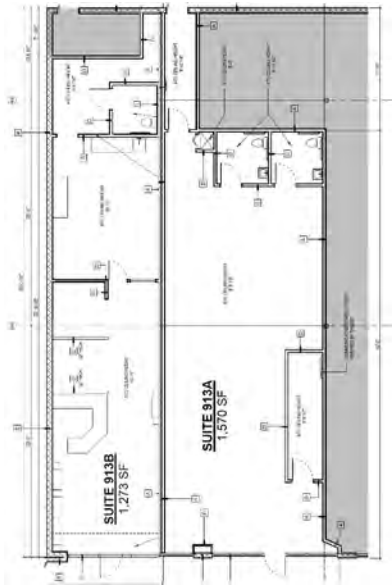
Retail Space for Lease

Pinehurst Square East | Bismarck, North Dakota



DUEMELANDS
COMMERCIAL REAL ESTATE

Pinehurst Square East, Ste. 913 - 2,843 combined sf
913 W Interstate Avenue - Bismarck, North Dakota



Duemelands Commercial Real Estate
301 E. Thayer Avenue - Bismarck, ND 58501
Phone: (701) 221-2222
www.duemelands.com

Jill Duemeland, CCIM
CEO & President
Phone: 701.221.9033
jill@duemelands.com

April Eide, CCIM
Vice President of Brokerage
Direct: 701.223.5863
april@duemelands.com

The information contained herein, while not guaranteed, have been obtained from sources we believe to be reliable. We make no warranties, whether expressed or implied, as to the accuracy or completeness of the information. Any reference to square footage and monetary values are considered approximations. Buyer or Lessee should conduct their own analysis and rely on their own investigative results.