

Office / Medical Space for Lease

Metro Center | Minot, North Dakota



DUEMELANDS
COMMERCIAL REAL ESTATE



Call for Lease Rates

Available Spaces

- ❖ Suite 6 2,200 sf
- ❖ Suite 9 2,268 sf
- ❖ Suite 1326 4,584 sf (Available June 2026)
- ❖ Suite 1364 *Leased*
- ❖ Suite 1401-2 *Leased*

Property Information

- ❖ Pylon & building signage
- ❖ \$4.03 psf CAM
- ❖ Abundant parking
- ❖ Close to Dakota Square Mall, Target, & Southgate Crossing Shopping Center
- ❖ Easy access to Highway 2 and 16th St SW

Area Demographics

Radius	1-Mile	3-Mile	5-Mile
Population:	7,397	38,434	53,090
Number of Households:	3,449	16,485	23,034
Average Household Income:	\$120,668	\$100,685	\$101,041
Households w/ \$50K+ Income:	2,255	10,320	14,556
%of Population w/ Assoc. Degree +:	42.6%	44.8%	45.2%
Number of Employees:	7,398	28,490	36,469
Number of Businesses:	613	2,184	2,680



Duemelands Commercial Real Estate
301 E. Thayer Avenue - Bismarck, ND 58501
Phone: (701) 221-2222
www.duemelands.com

Jill Duemeland, CCIM
CEO & President
Phone: 701.471.8996
jill@duemelands.com

April Eide, CCIM
Vice President of Brokerage
Direct: 701.391.8220
april@duemelands.com

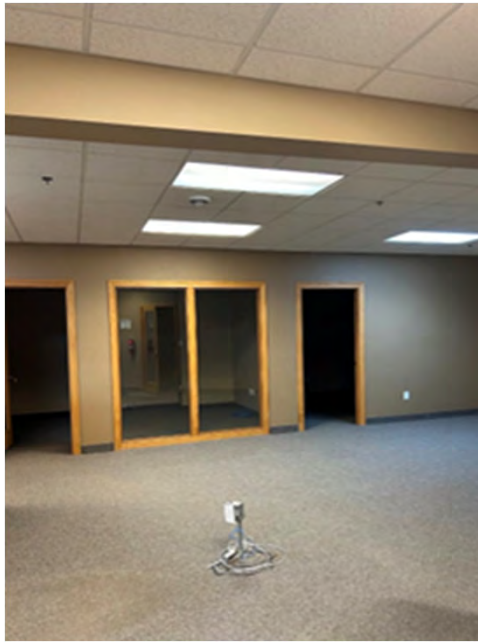
Office / Medical Space for Lease

Metro Center | Minot, North Dakota



DUEMELANDS
COMMERCIAL REAL ESTATE

Metro Center, Suite 6 - 2,200 sf Minot, North Dakota



Metro Center, Suite 9 - 2,268 sf Minot, North Dakota



Duemelands Commercial Real Estate
301 E. Thayer Avenue - Bismarck, ND 58501
Phone: (701) 221-2222
www.duemelands.com

Jill Duemeland, CCIM
CEO & President
Phone: 701.471.8996
jill@duemelands.com

April Eide, CCIM
Vice President of Brokerage
Direct: 701.391.8220
april@duemelands.com

The information contained herein, while not guaranteed, have been obtained from sources we believe to be reliable. We make no warranties, whether expressed or implied, as to the accuracy or completeness of the information. Any reference to square footage and monetary values are considered approximations. Buyer or Lessee should conduct their own analysis and rely on their own investigative results.

Office / Medical Space for Lease

Metro Center | Minot, North Dakota



DUEMELANDS
COMMERCIAL REAL ESTATE

Minot Aerial



Duemelands Commercial Real Estate
301 E. Thayer Avenue - Bismarck, ND 58501
Phone: (701) 221-2222
www.duemelands.com

Jill Duemeland, CCIM
CEO & President
Phone: 701.471.8996
jill@duemelands.com

April Eide, CCIM
Vice President of Brokerage
Direct: 701.391.8220
april@duemelands.com